

# Photometric Report

SAM0904920002 LED zoomTrack light 30W (WW - spot), Zoom spot, Ordercode

## REPORT SUMMARY

### Output

Total Lumens:	1404 Lumen
Peak Intensity:	9389 candela
Illuminance @ 5m:	376 lx
CRI:	90,9
CCT:	2872 K

### Optical

Beam Angle (50%)	20,4 °
Field Angle (10%)	35 °

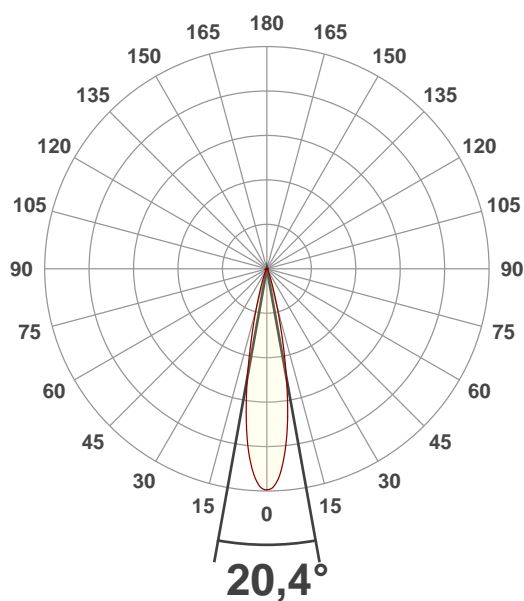
### Conditions:

Power Supply:	223 V
Power:	29,8 W
Current:	0,135 A
Power Factor:	0,99



## MEASUREMENTS

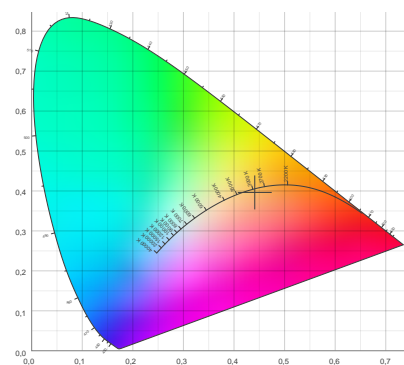
Angular Beam Distribution



Spectral Distribution



CIE 1931

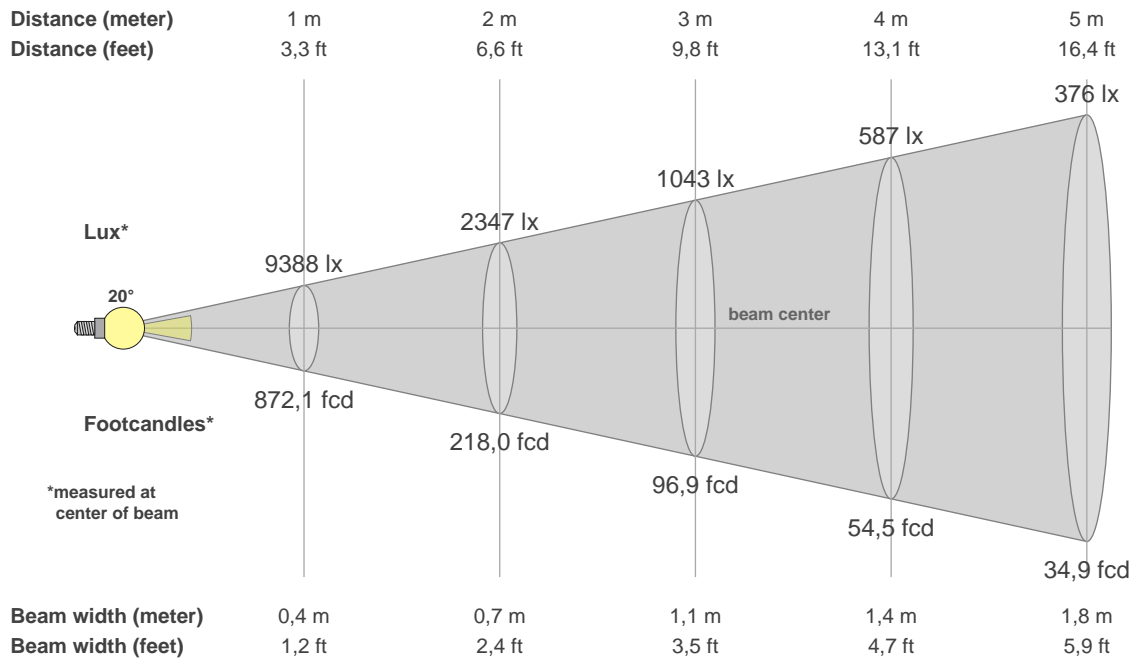


# Photometric Report



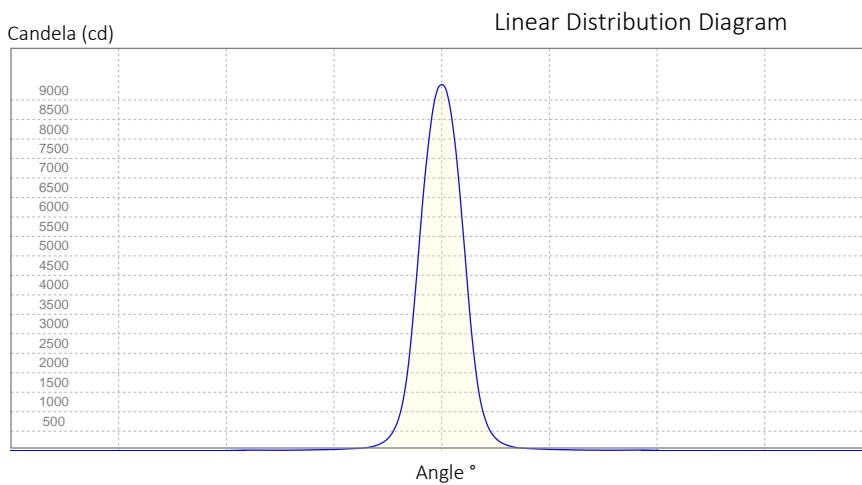
SAM0904920002 LED zoomTrack light 30W (WW - spot), Zoom spot, Ordercode

## BEAM DETAILS



### Beam Illuminances from 1-20m

1m	2m	3m	4m	5m	6m	7m	8m	9m	10m	11m	12m	13m	14m	15m	16m	17m	18m	19m	20m
3,3ft	6,6ft	9,8ft	13,1ft	16,4ft	19,7ft	23ft	26,2ft	29,5ft	32,8ft	36,1ft	39,4ft	42,7ft	45,9ft	49,2ft	52,5ft	55,8ft	59,1ft	62,3ft	65,6ft
9388lx	2347lx	1043lx	587lx	376lx	261lx	192lx	147lx	116lx	94lx	78lx	65lx	56lx	48lx	42lx	37lx	32lx	29lx	26lx	23lx
872,1fcd	218fcd	96,9fcd	54,5fcd	34,9fcd	24,2fcd	17,8fcd	13,6fcd	10,8fcd	8,7fcd	7,2fcd	6,1fcd	5,2fcd	4,4fcd	3,9fcd	3,4fcd	3fcd	2,7fcd	2,4fcd	2,2fcd



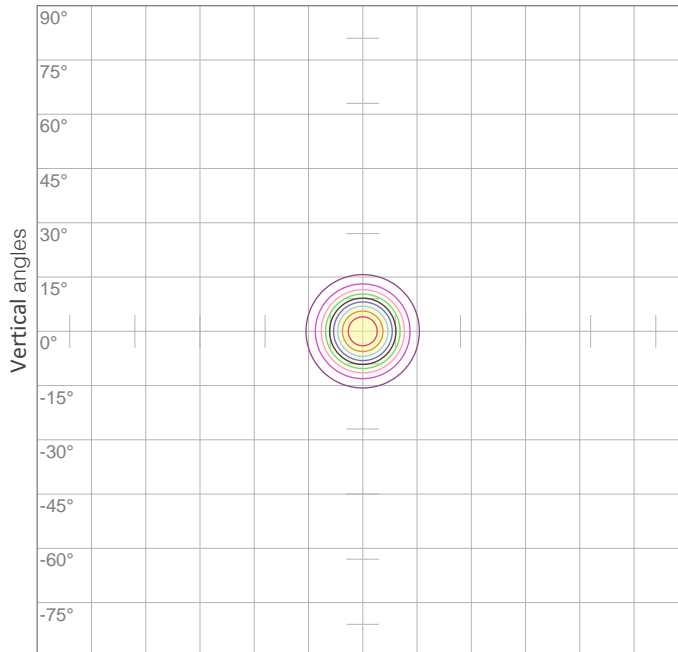
Beam Angle (50%): 20,4 °  
 Field Angle (10%): 35 °  
 Cutoff Angle (3%): 48,2 °

# Photometric Report



SAM0904920002 LED zoomTrack light 30W (WW - spot), Zoom spot, Ordercode

## POLAR DIAGRAMS



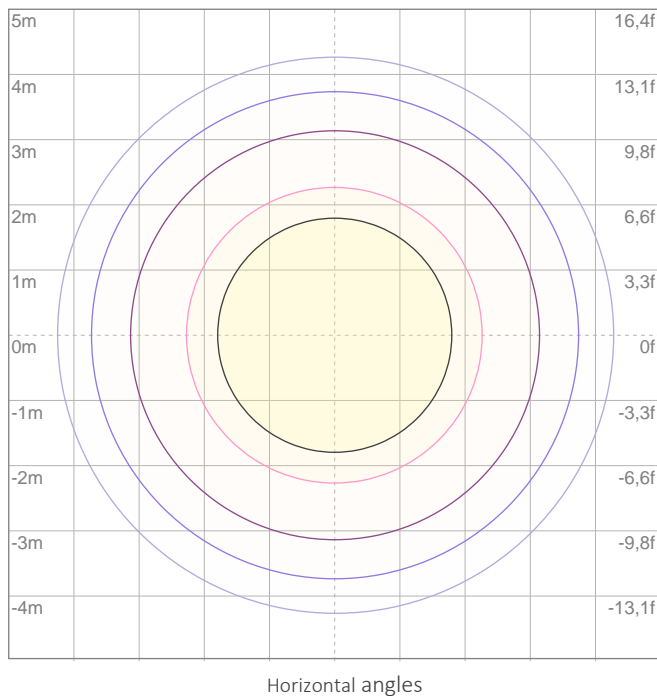
### ISO candela diagram

10%	939 cd
20%	1878 cd
30%	2816 cd
40%	3755 cd
50%	4694 cd
60%	5633 cd
70%	6571 cd

Conditions:

Number of c-planes: {C\_PLANES}

Candela at center: 9388 cd



### ISO lux diagram

3%	2,82 lx
5%	4,69 lx
10%	9,39 lx
30%	28,2 lx
50%	46,9 lx

Conditions:

Number of c-planes: 2

Lux at center: 93,9 lx

*Lux distribution on a surface when lamp is mounted at 10 meters from the surface.*

Mounting height: 10 meters (33 feet)

# Photometric Report



SAM0904920002 LED zoomTrack light 30W (WW - spot), Zoom spot, Ordercode

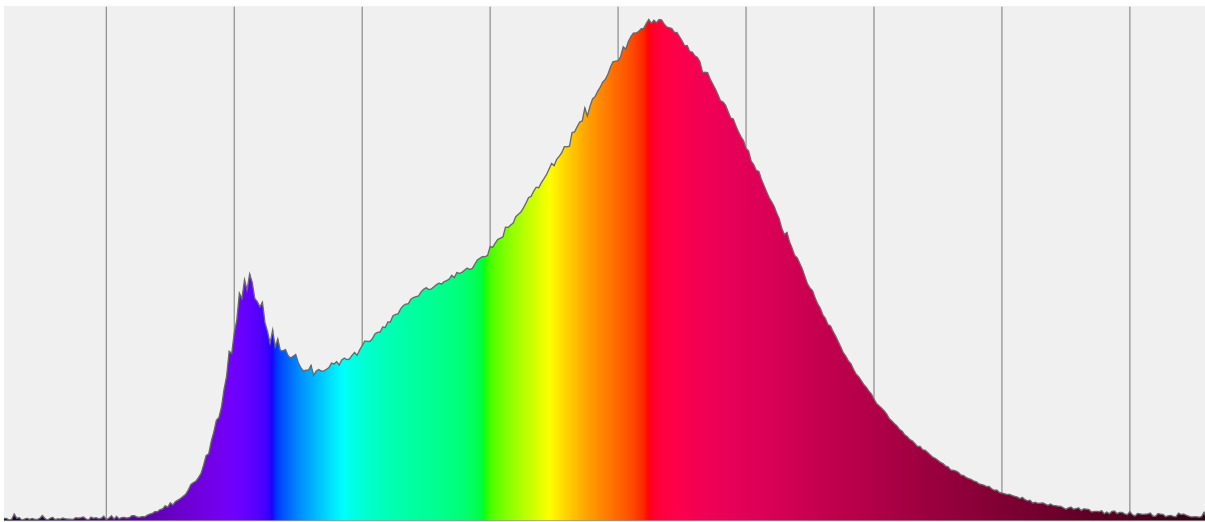
## CHROMATICITY REPORT

Total Lumens: 1404 lm  
Peak Intensity: 9389 cd  
Fixture Efficiency: 47 Lumen/Watt

Color Temperature: 2872 K  
CRI: 90,9  
CRI R9: 51,3  
CQS: 89,7  
TM-30 Rf: 90,2  
TM-30 Rg: 97,2  
 $\Delta uv$ : -0,0036  
1<sup>st</sup> Dominant Wavelength: 612 nm  
2<sup>nd</sup> Dominant Wavelength: 456 nm



Spectral Distribution



### Color

**2872 K**  
CIE 1931 Coordinates:  
X: 0,441 Y: 0,396

### Color Temperature

**2872 K**

### CRI

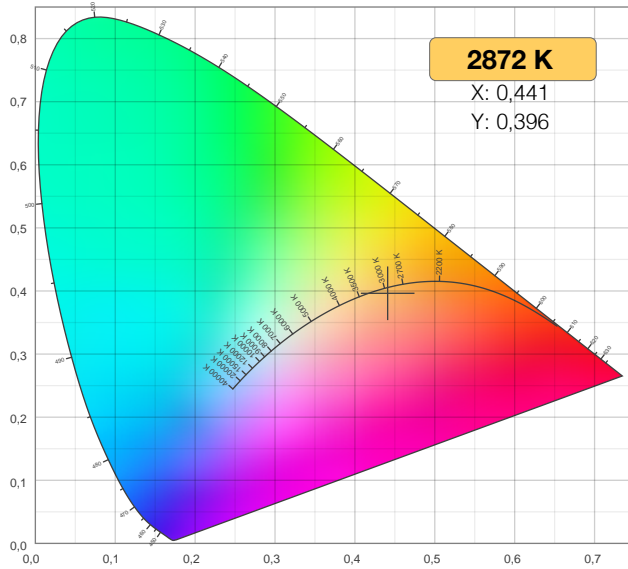
**90,9**

# Photometric Report

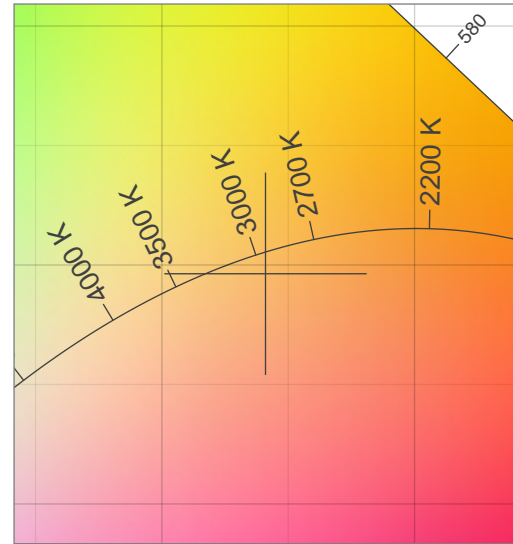
SAM0904920002 LED zoomTrack light 30W (WW - spot), Zoom spot, Ordercode

## CHROMATICITY

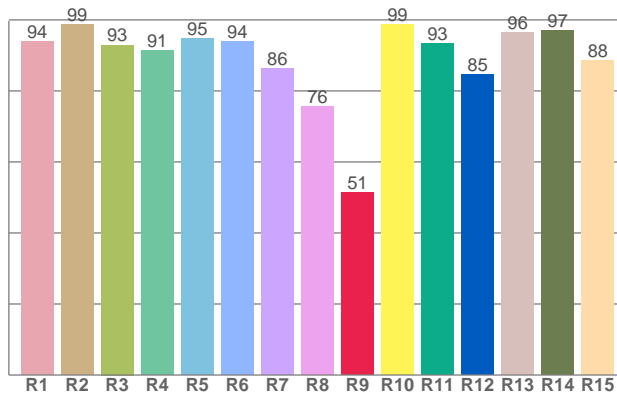
CIE 1931



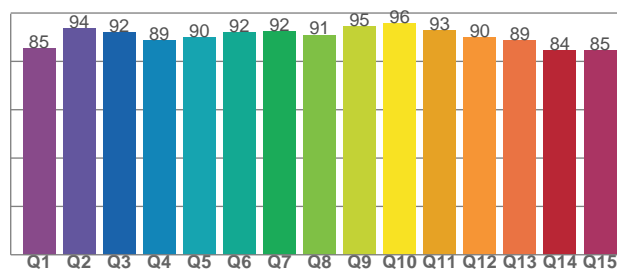
CIE 1931 - Detail



CRI: 90,9 (R1-R8)



CQSI: 89,7



# Photometric Report



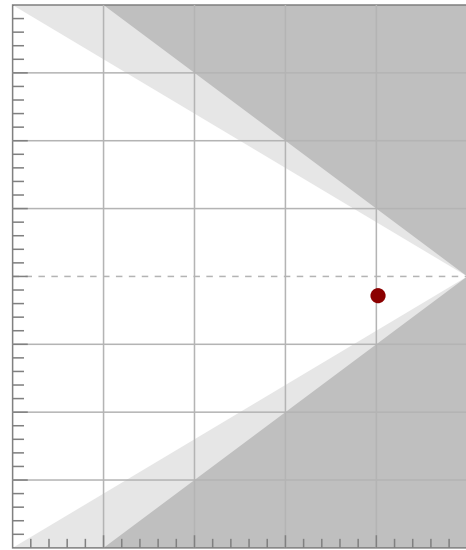
SAM0904920002 LED zoomTrack light 30W (WW - spot), Zoom spot, Ordercode

## TM-30-18 DETAILS

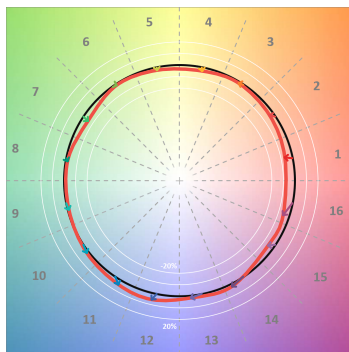
**Rf 90,2**  
Fidelity index Rf

**Rg 97,2**  
Gamut index Rg

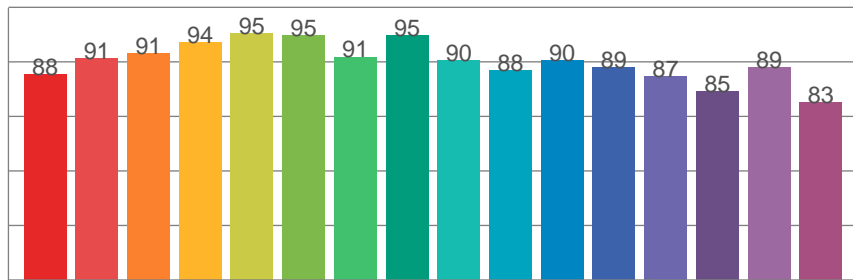
Hue Bin	R <sub>f</sub>	Shifts (%)	
		Chroma	Hue
1	88	-6%	2%
2	91	-3%	4%
3	91	-1%	4%
4	94	-3%	-1%
5	95	-2%	0%
6	95	-1%	-1%
7	91	-5%	1%
8	95	-2%	2%
9	90	-1%	6%
10	88	1%	7%
11	90	4%	6%
12	89	6%	-3%
13	87	2%	-10%
14	85	2%	-13%
15	89	-5%	-4%
16	83	-6%	-12%



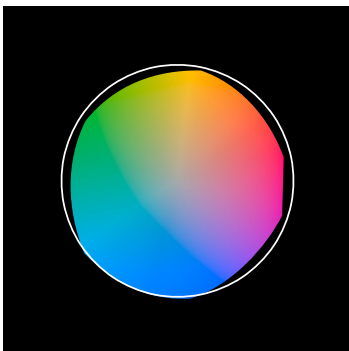
TM30-18 Color Vectors



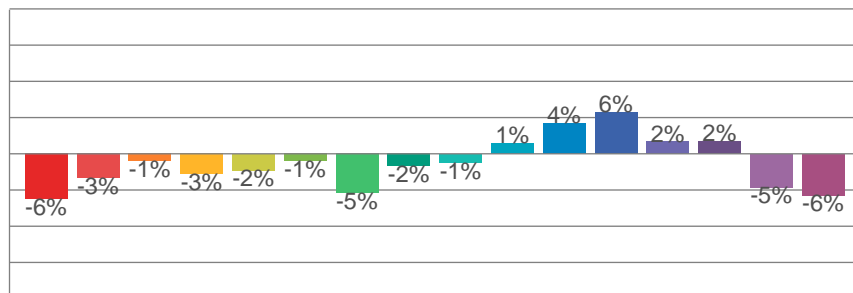
Rf by Hue Bin



TM30 Color Distortion



TM30 Chroma Shift



TM30 Color Fidelity Sample Chart

