

# Photometric Report

SAM0904920005 Track light 30W (CW), , Ordercode

## REPORT SUMMARY

### Output

Total Lumens:	2247 Lumen
Peak Intensity:	4112 candela
Illuminance @ 5m:	164 lx
CRI:	93,2
CCT:	7000 K

### Optical

Beam Angle (50%)	38,2 °
Field Angle (10%)	70,3 °

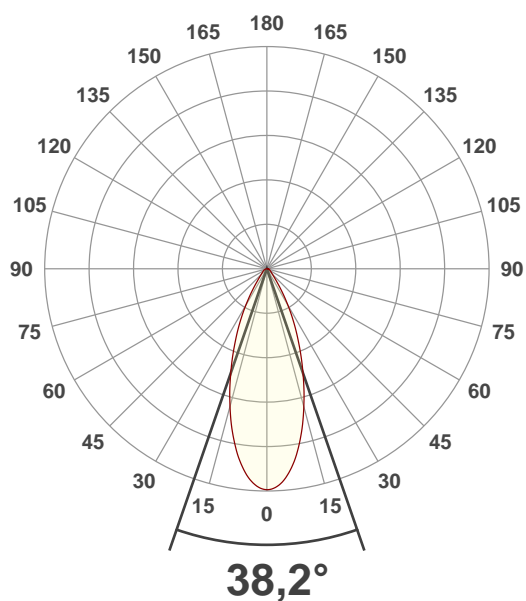
### Conditions:

Power Supply:	222 V
Power:	31,2 W
Current:	0,141 A
Power Factor:	0,99

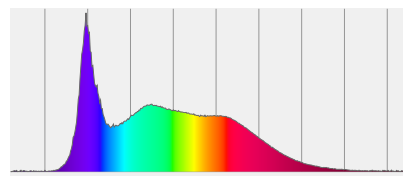


## MEASUREMENTS

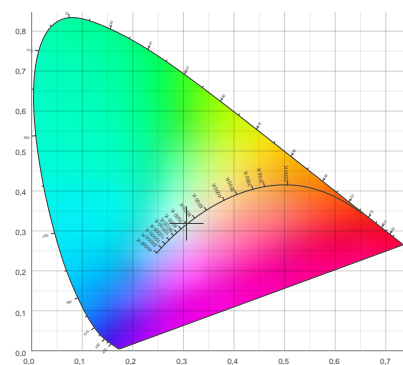
Angular Beam Distribution



Spectral Distribution



CIE 1931

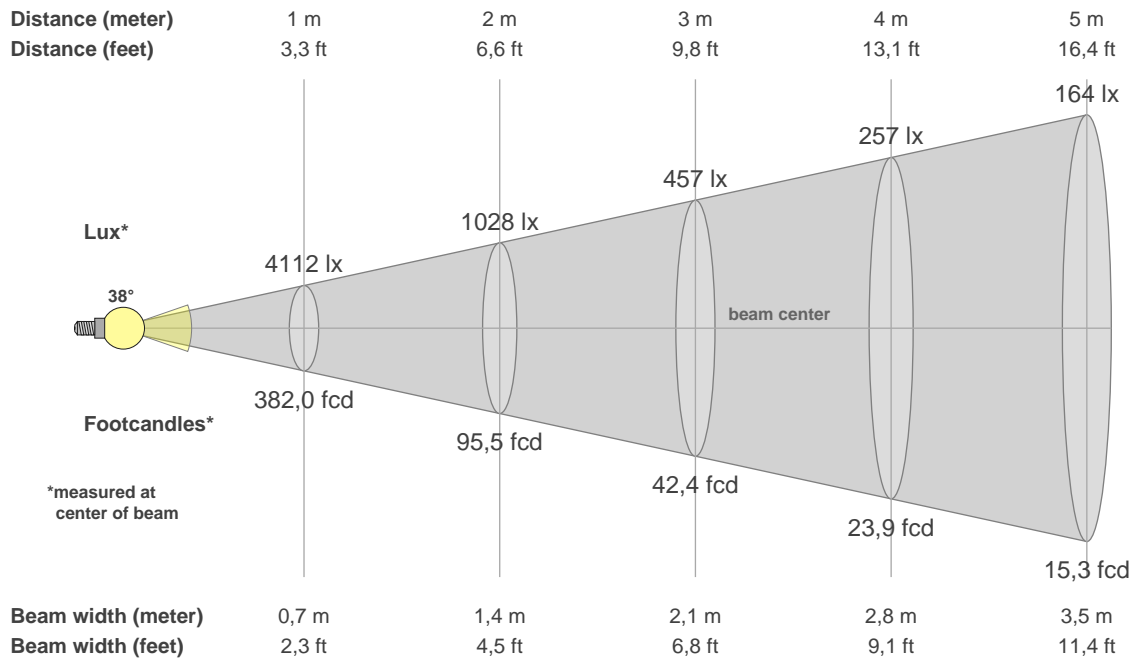


# Photometric Report



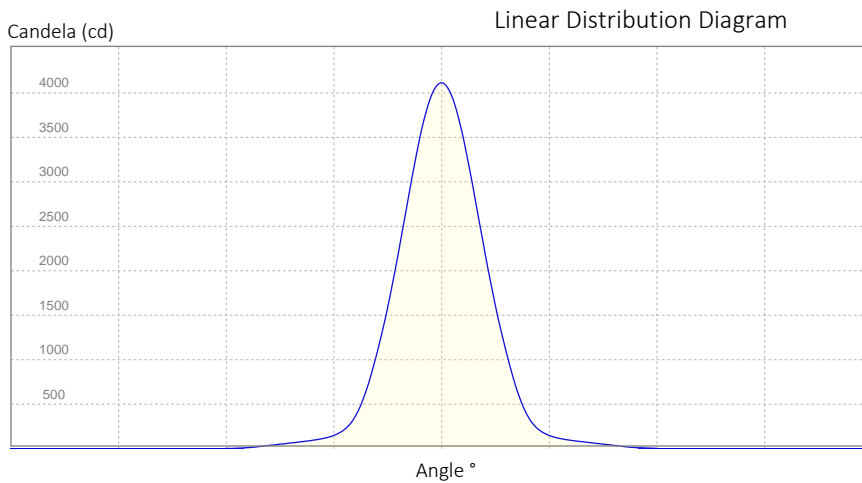
SAM0904920005 Track light 30W (CW), , Ordercode

## BEAM DETAILS



### Beam Illuminances from 1-20m

1m	2m	3m	4m	5m	6m	7m	8m	9m	10m	11m	12m	13m	14m	15m	16m	17m	18m	19m	20m
3,3ft	6,6ft	9,8ft	13,1ft	16,4ft	19,7ft	23ft	26,2ft	29,5ft	32,8ft	36,1ft	39,4ft	42,7ft	45,9ft	49,2ft	52,5ft	55,8ft	59,1ft	62,3ft	65,6ft
4112lx	1028lx	457lx	257lx	164lx	114lx	84lx	64lx	51lx	41lx	34lx	29lx	24lx	21lx	18lx	16lx	14lx	13lx	11lx	10lx
382fcd	95,5fcd	42,4fcd	23,9fcd	15,3fcd	10,6fcd	7,8fcd	6fcd	4,7fcd	3,8fcd	3,2fcd	2,7fcd	2,3fcd	1,9fcd	1,7fcd	1,5fcd	1,3fcd	1,2fcd	1,1fcd	1fcd



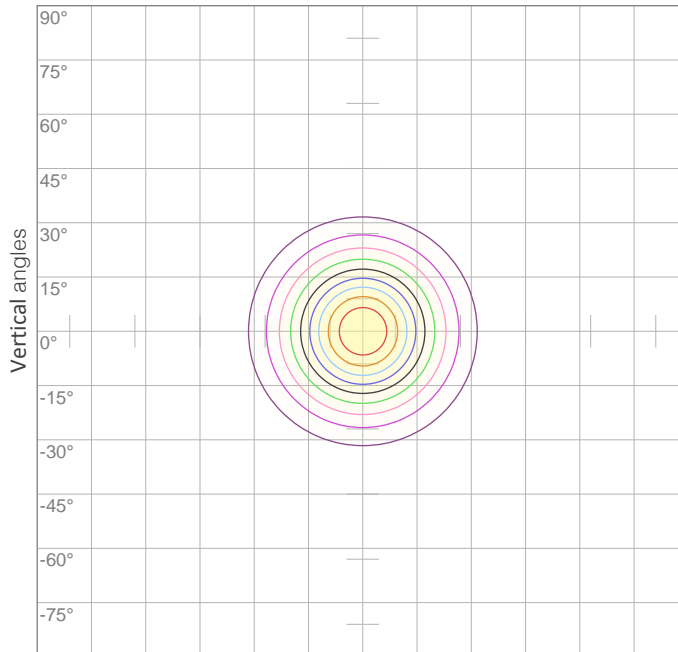
Beam Angle (50%): 38,2 °  
 Field Angle (10%): 70,3 °  
 Cutoff Angle (3%): 103,5 °

# Photometric Report



SAM0904920005 Track light 30W (CW), , Ordercode

## POLAR DIAGRAMS



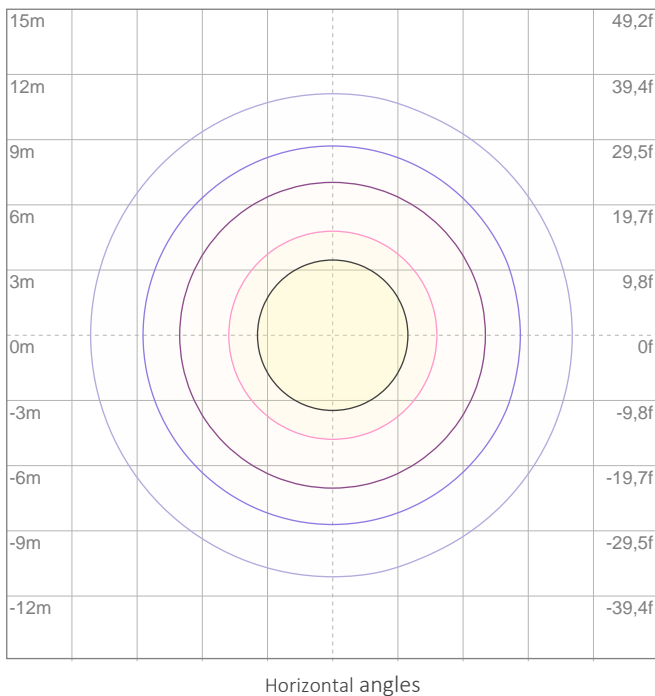
### ISO candela diagram

—	10%	411 cd
—	20%	822 cd
—	30%	1234 cd
—	40%	1645 cd
—	50%	2056 cd
—	60%	2467 cd
—	70%	2878 cd

Conditions:

Number of c-planes: {C\_PLANES}

Candela at center: 4112 cd



### ISO lux diagram

—	3%	1,23 lx
—	5%	2,06 lx
—	10%	4,11 lx
—	30%	12,3 lx
—	50%	20,6 lx

Conditions:

Number of c-planes: 2

Lux at center: 41,1 lx

*Lux distribution on a surface when lamp is mounted at 10 meters from the surface.*

Mounting height: 10 meters (33 feet)

# Photometric Report



SAM0904920005 Track light 30W (CW), , Ordercode

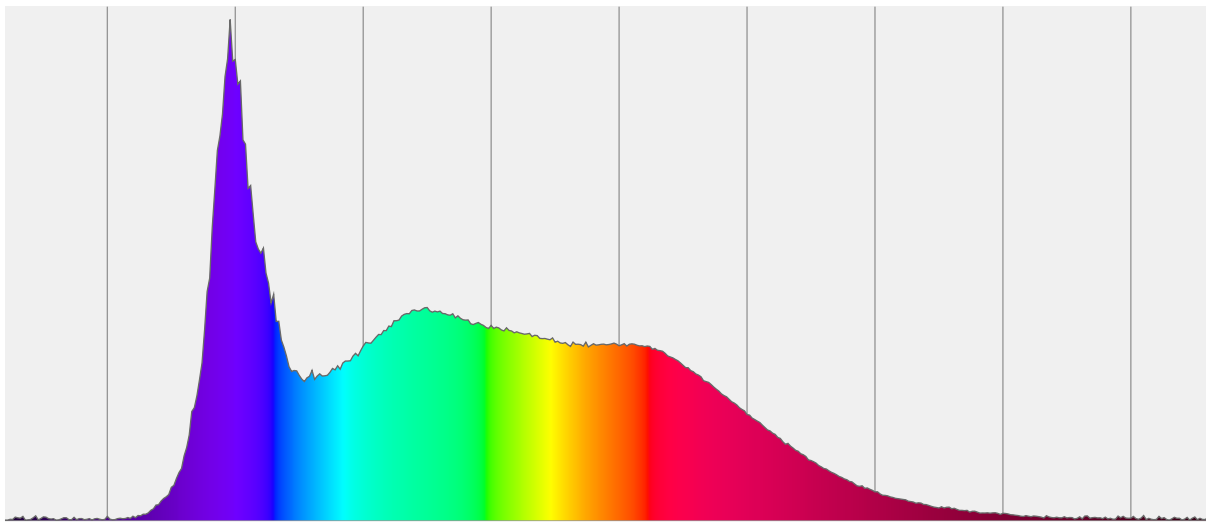
## CHROMATICITY REPORT

Total Lumens: 2247 lm  
Peak Intensity: 4112 cd  
Fixture Efficiency: 72 Lumen/Watt

Color Temperature: 7000 K  
CRI: 93,2  
CRI R9: 64,9  
CQS: 90,8  
TM-30 Rf: 90,5  
TM-30 Rg: 99,6  
 $\Delta uv$ : 0,0019  
1<sup>st</sup> Dominant Wavelength: 448 nm  
2<sup>nd</sup> Dominant Wavelength: 525 nm



Spectral Distribution



### Color

**7000 K**  
CIE 1931 Coordinates:  
X: 0,306 Y: 0,319

### Color Temperature

**7000 K**

### CRI

**93,2**

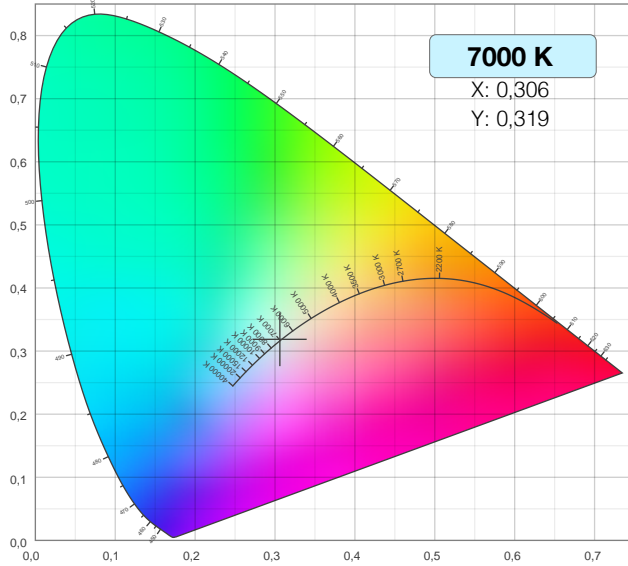
# Photometric Report



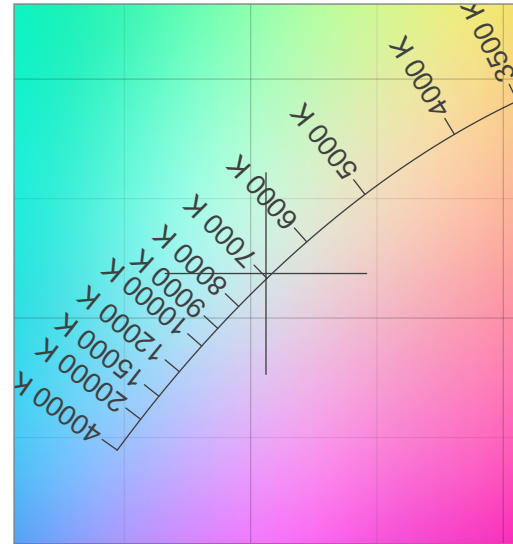
SAM0904920005 Track light 30W (CW), , Ordercode

## CHROMATICITY

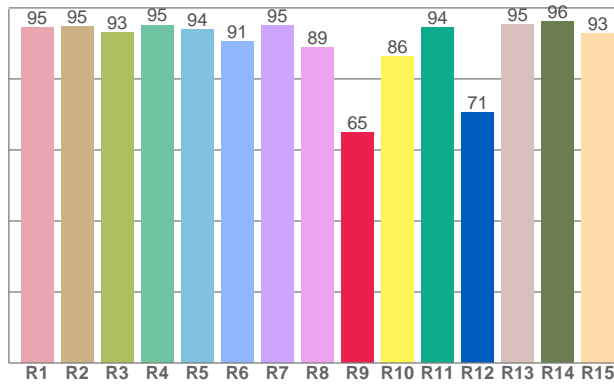
CIE 1931



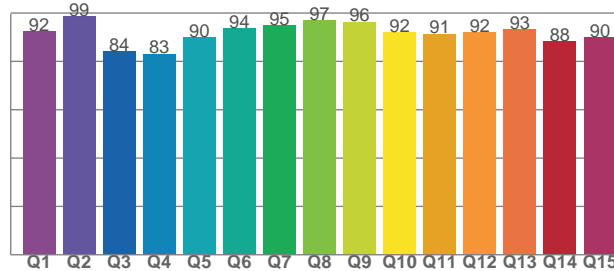
CIE 1931 - Detail



CRI: 93,2 (R1-R8)



CQSI: 90,8



# Photometric Report



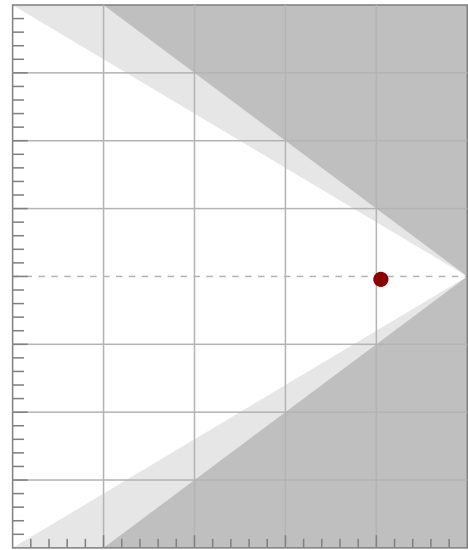
SAM0904920005 Track light 30W (CW), , Ordercode

## TM-30-18 DETAILS

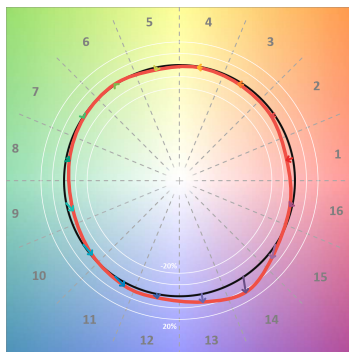
**Rf 90,5**  
Fidelity index Rf

**Rg 99,6**  
Gamut index Rg

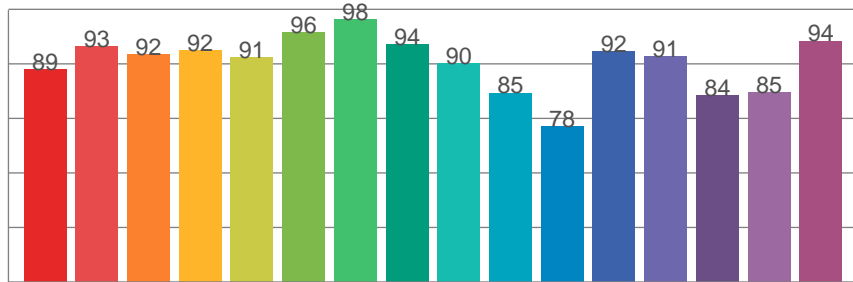
Hue Bin	R <sub>f</sub>	Shifts (%)	
		Chroma	Hue
1	89	-5%	-1%
2	93	-3%	3%
3	92	-2%	4%
4	92	0%	3%
5	91	-2%	1%
6	96	1%	0%
7	98	-1%	0%
8	94	-3%	2%
9	90	-5%	7%
10	85	-1%	11%
11	78	2%	11%
12	92	3%	1%
13	91	7%	0%
14	84	13%	-6%
15	85	4%	-11%
16	94	-2%	-3%



TM30-18 Color Vectors



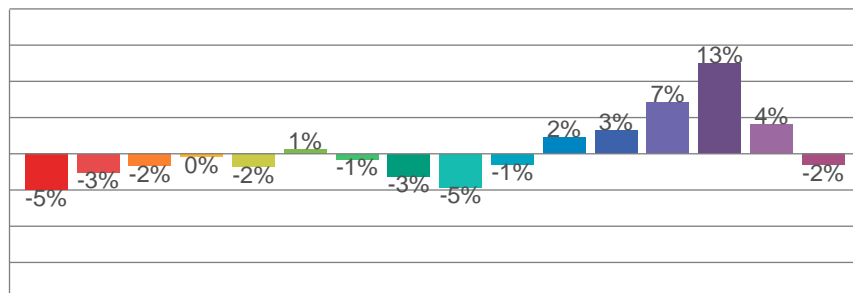
Rf by Hue Bin



TM30 Color Distortion



TM30 Chroma Shift



TM30 Color Fidelity Sample Chart

