

Photometric Report

34066 - ACT Par 200W (Ww), , Ordercode



REPORT SUMMARY

Output

Total Lumens:	5208 Lumen
Peak Intensity:	13132 candela
Illuminance @ 5m:	524 lx
CRI:	96,9
CCT:	2837 K

Optical

Beam Angle (50%)	23,5 °
Field Angle (10%)	79,8 °

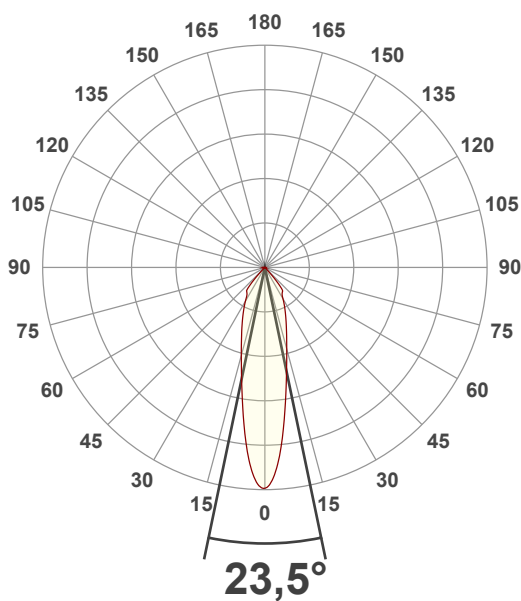
Conditions:

Power Supply:	225 V
Power:	108,8 W
Current:	0,533 A
Power Factor:	0,91

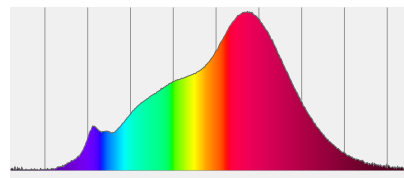


MEASUREMENTS

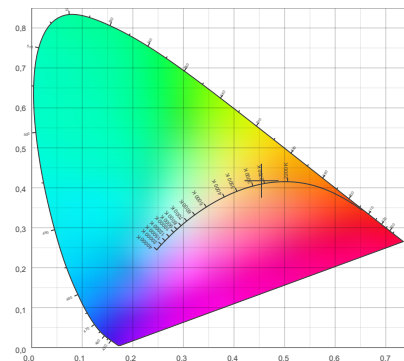
Angular Beam Distribution



Spectral Distribution



CIE 1931

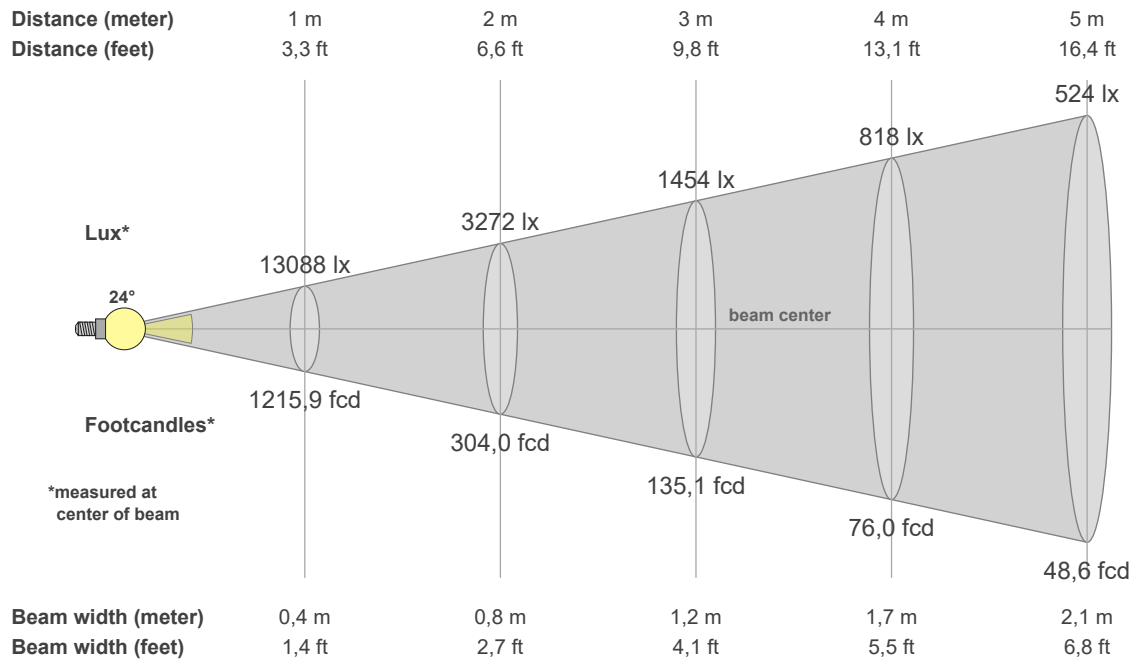


BEAM DETAILS

Photometric Report

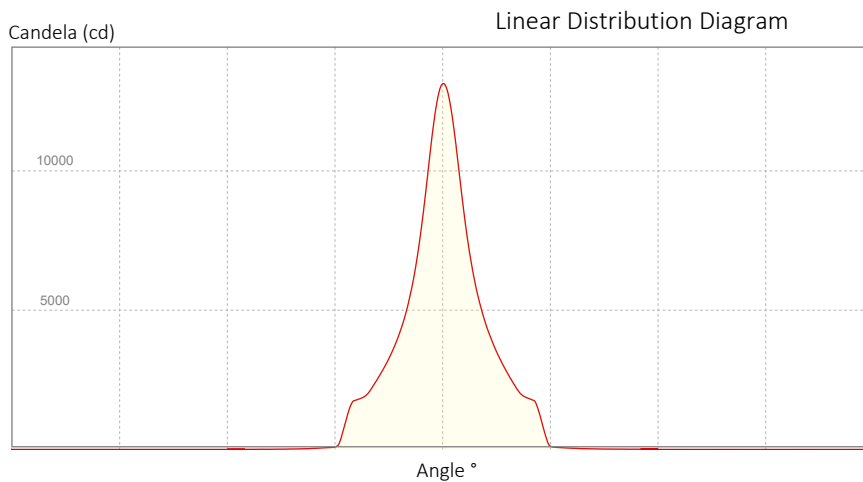


34066 - ACT Par 200W (Ww), , Ordercode



Beam Illuminances from 1-20m

1m	2m	3m	4m	5m	6m	7m	8m	9m	10m	11m	12m	13m	14m	15m	16m	17m	18m	19m	20m
3,3ft	6,6ft	9,8ft	13,1ft	16,4ft	19,7ft	23ft	26,2ft	29,5ft	32,8ft	36,1ft	39,4ft	42,7ft	45,9ft	49,2ft	52,5ft	55,8ft	59,1ft	62,3ft	65,6ft
13088lx	3272lx	1454lx	818lx	524lx	364lx	267lx	204lx	162lx	131lx	108lx	91lx	77lx	67lx	58lx	51lx	45lx	40lx	36lx	33lx
1215,9fcd	304fcd	135,1fcd	76fcd	48,6fcd	33,8fcd	24,8fcd	19fcd	15fcd	12,2fcd	10fcd	8,4fcd	7,2fcd	6,2fcd	5,4fcd	4,7fcd	4,2fcd	3,8fcd	3,4fcd	3fcd



Beam Angle (50%): 23,5 °
 Field Angle (10%): 79,8 °
 Cutoff Angle (3%): 86,5 °

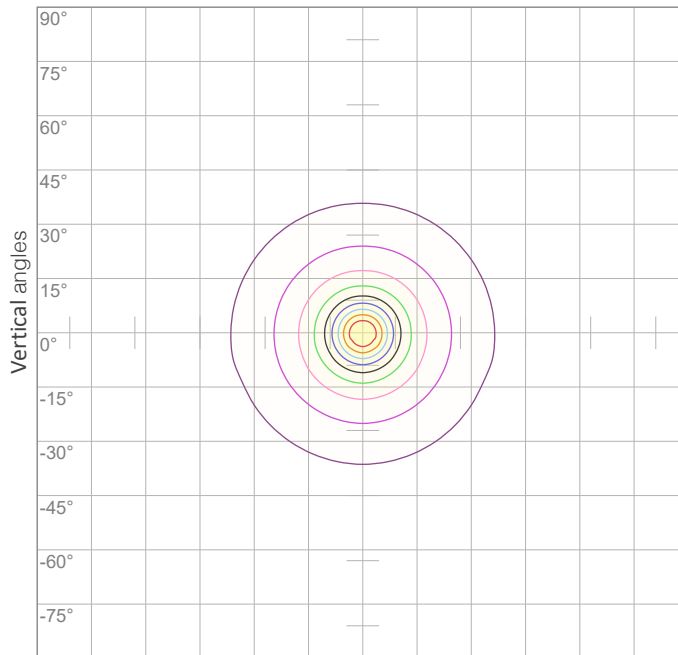
POLAR DIAGRAMS

ISO candela diagram

All product specifications, measurements, values and dimensions are subject to change without prior notice

Photometric Report

34066 - ACT Par 200W (Ww), , Ordercode

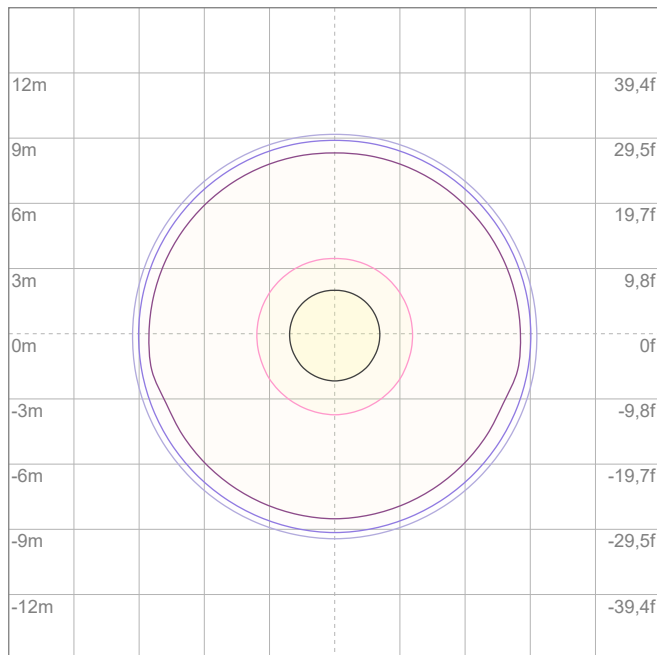


10%	1309 cd
20%	2618 cd
30%	3926 cd
40%	5235 cd
50%	6544 cd
60%	7853 cd
70%	9161 cd

Conditions:

Number of c-planes: {C_PLANES}

Candela at center: 13088 cd



ISO lux diagram

3%	3,93 lx
5%	6,54 lx
10%	13,1 lx
30%	39,3 lx
50%	65,4 lx

Conditions:

Number of c-planes: 2

Lux at center: 131 lx

Lux distribution on a surface when lamp is mounted at 10 meters from the surface.

Mounting height: 10 meters (33 feet)

CHROMATICITY REPORT

Photometric Report



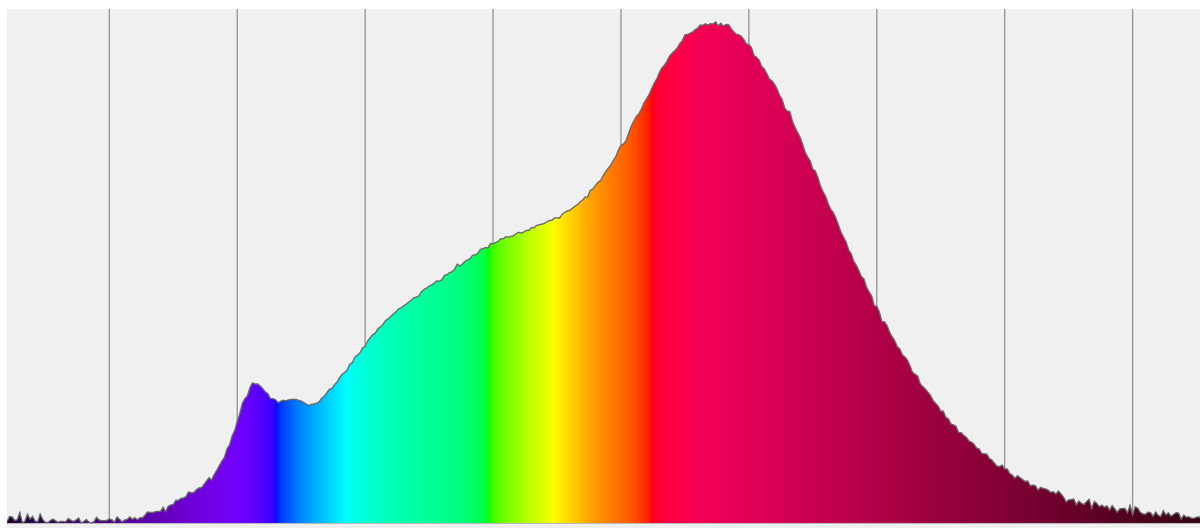
34066 - ACT Par 200W (Ww), , Ordercode

Total Lumens: 5208 lm
Peak Intensity: 13132 cd
Fixture Efficiency: 48 Lumen/Watt

Color Temperature: 2837 K
CRI: 96,9
CRI R9: 98,9
CQS: 91,4
TM-30 Rf: 92,7
TM-30 Rg: 97,3
 Δuv : 0,0031
1st Dominant Wavelength: 637 nm
2nd Dominant Wavelength: 456 nm



Spectral Distribution



Color

2837 K
CIE 1931 Coordinates:
X: 0,454 Y: 0,418

Color Temperature

2837 K

CRI

96,9

CHROMATICITY

CIE 1931 - Detail

2837 K

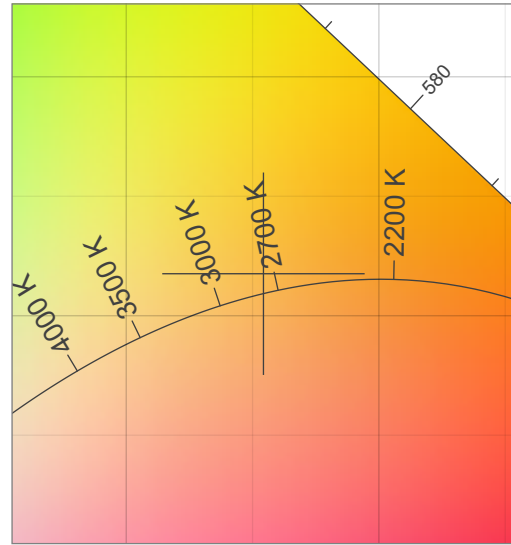
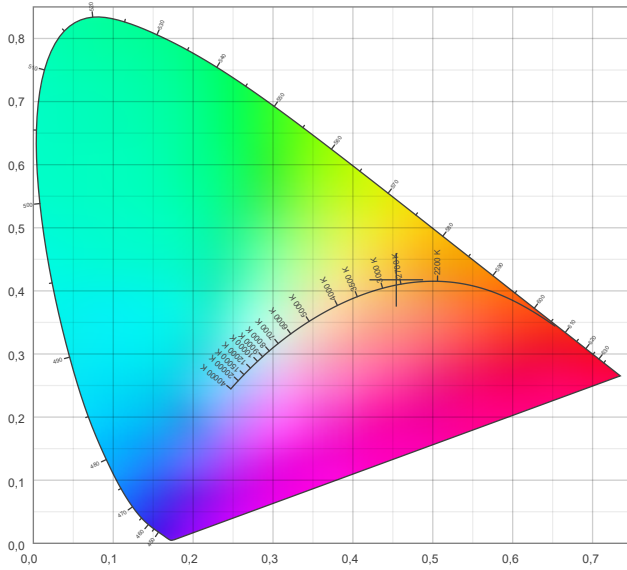
All product specifications, measurements, values and dimensions are subject to change without prior notice
X: 0,454
Y: 0,418

Photometric Report

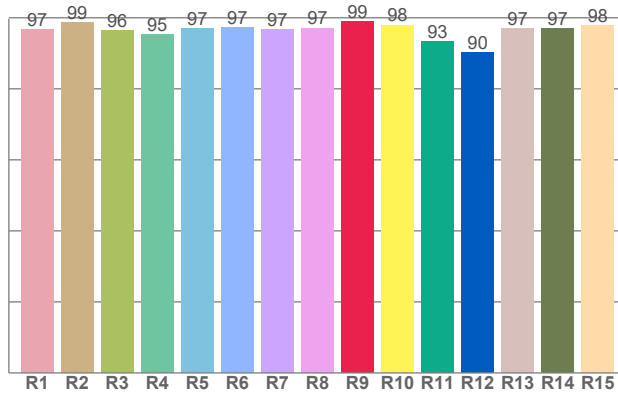
34066 - ACT Par 200W (Ww), , Ordercode



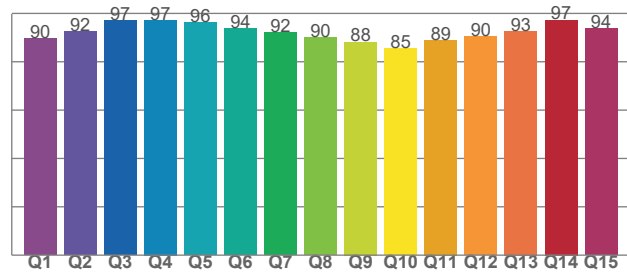
CIE 1931



CRI: 96,9 (R1-R8)



CQSI: 91,4



TM-30-18 DETAILS

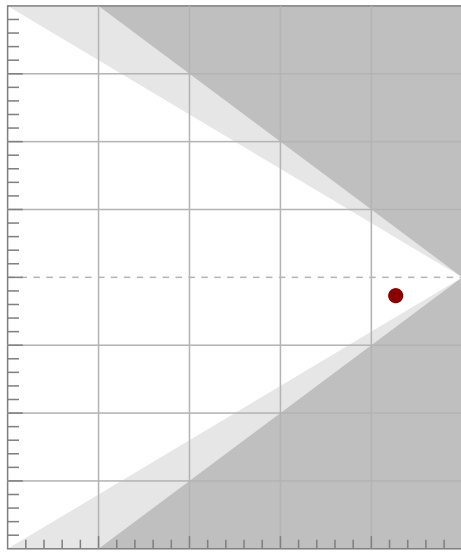
Photometric Report

34066 - ACT Par 200W (Ww), , Ordercode

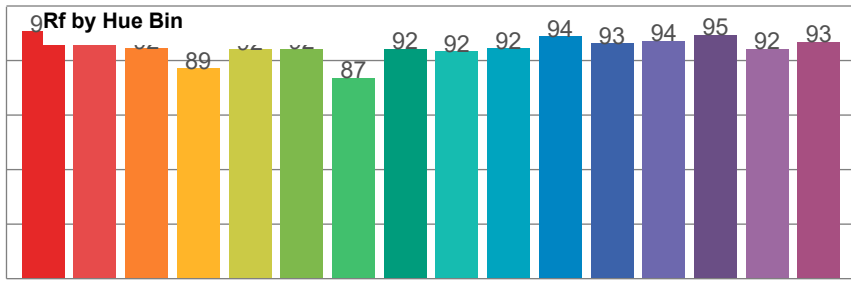
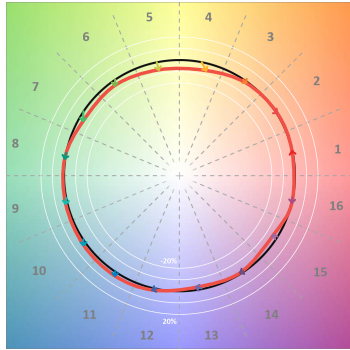
Rf 92,7
Fidelity index Rf

Rg 97,3
Gamut index Rg

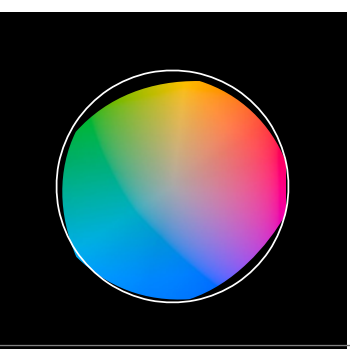
Hue Bin	Rf	Shifts (%)	
		Chroma	Hue
1	95	0%	1%
2	96	1%	-2%
3	92	-1%	-4%
4	89	-6%	-5%
5	92	-7%	0%
6	92	-4%	3%
7	87	-5%	7%
8	92	0%	5%
9	92	1%	5%
10	92	3%	4%
11	94	4%	2%
12	93	2%	-3%
13	94	-2%	-5%
14	95	0%	-3%
15	92	-3%	3%
16	93	1%	-4%



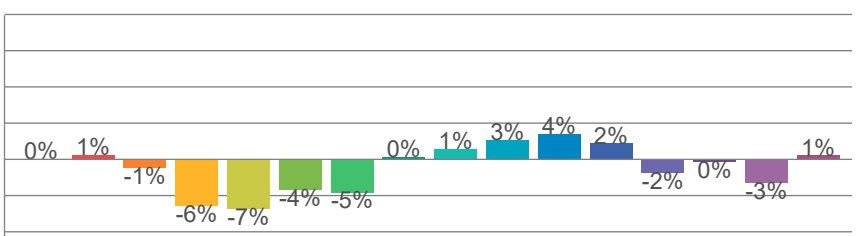
TM30-18 Color Vectors



TM30 Color Distortion



TM30 Chroma Shift



TM30 Color Fidelity Sample Chart

