

Photometric Report

34066 - ACT Par 200W (cw-ww), , Ordercode



REPORT SUMMARY

Output

Total Lumens:	10508 Lumen
Peak Intensity:	26082 candela
Illuminance @ 5m:	1041 lx
CRI:	92,2
CCT:	4386 K

Optical

Beam Angle (50%)	24 °
Field Angle (10%)	79,9 °

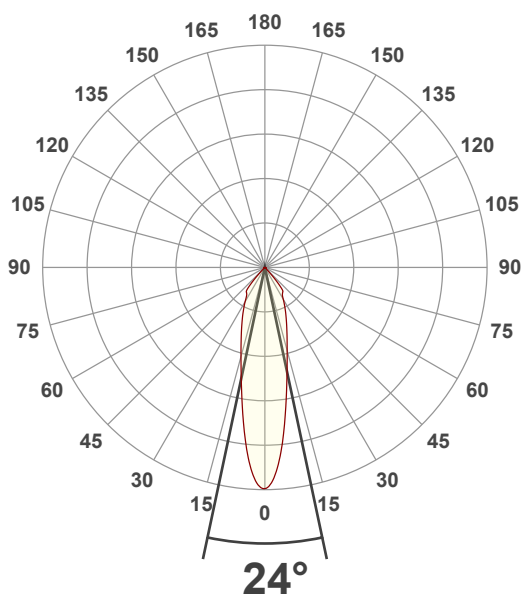
Conditions:

Power Supply:	226 V
Power:	210,2 W
Current:	0,958 A
Power Factor:	0,97

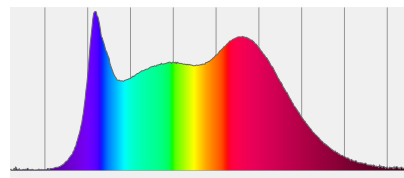


MEASUREMENTS

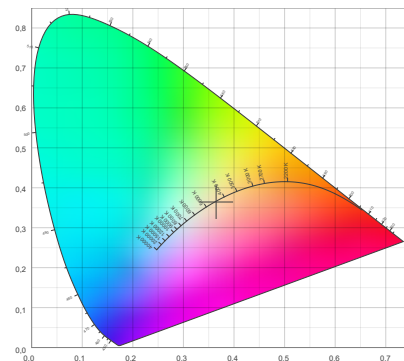
Angular Beam Distribution



Spectral Distribution



CIE 1931

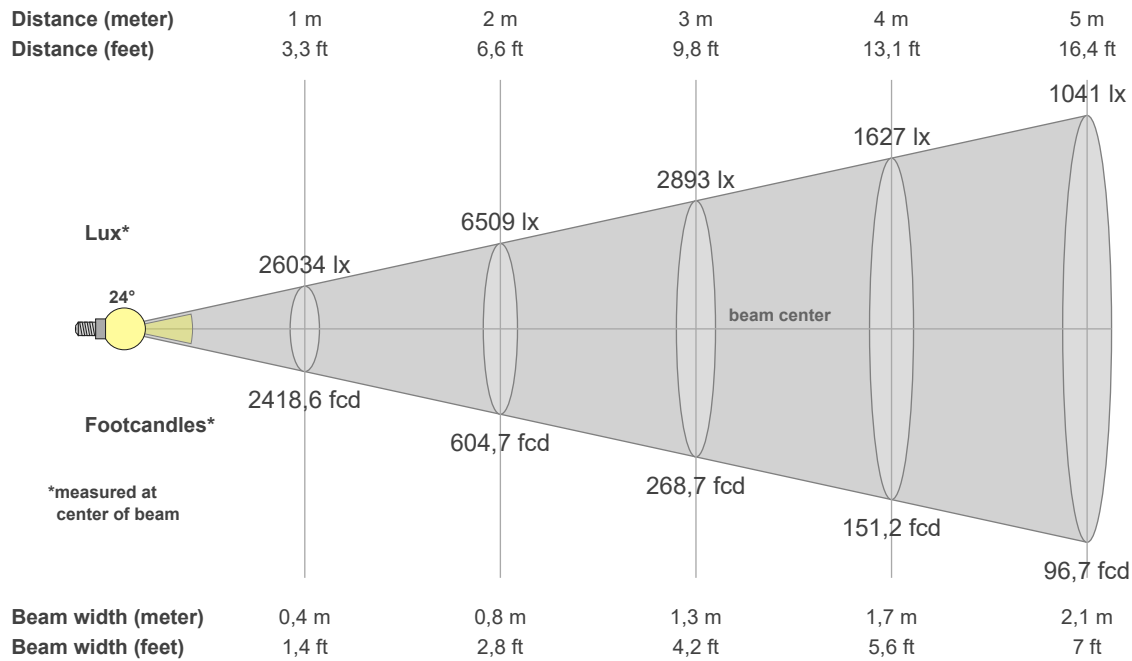


BEAM DETAILS

Photometric Report

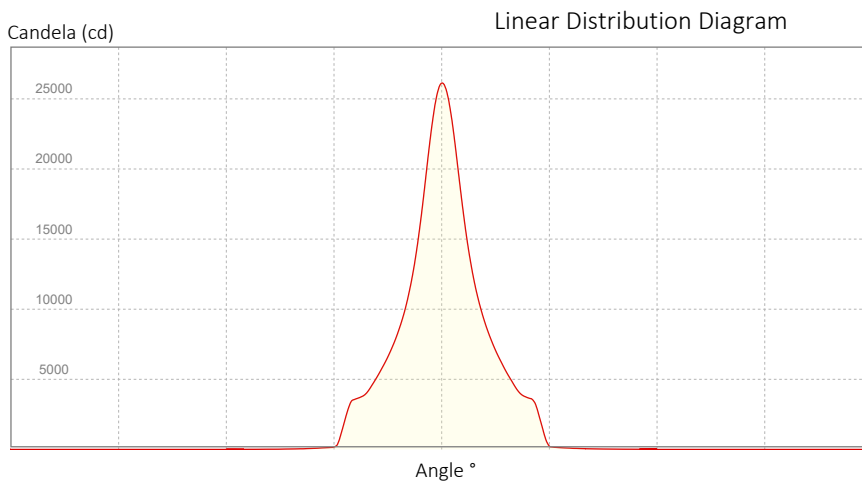


34066 - ACT Par 200W (cw-ww), , Ordercode



Beam Illuminances from 1-20m

1m	2m	3m	4m	5m	6m	7m	8m	9m	10m	11m	12m	13m	14m	15m	16m	17m	18m	19m	20m
3,3ft	6,6ft	9,8ft	13,1ft	16,4ft	19,7ft	23ft	26,2ft	29,5ft	32,8ft	36,1ft	39,4ft	42,7ft	45,9ft	49,2ft	52,5ft	55,8ft	59,1ft	62,3ft	65,6ft
26034lx	6509lx	2893lx	1627lx	1041lx	723lx	531lx	407lx	321lx	260lx	215lx	181lx	154lx	133lx	116lx	102lx	90lx	80lx	72lx	65lx
2418,6fcd	604,7fcd	268,7fcd	151,2fcd	96,7fcd	67,2fcd	49,4fcd	37,8fcd	29,9fcd	24,2fcd	20fcd	16,8fcd	14,3fcd	12,3fcd	10,7fcd	9,4fcd	8,4fcd	7,5fcd	6,7fcd	6fcd



Beam Angle (50%): 24 °
 Field Angle (10%): 79,9 °
 Cutoff Angle (3%): 86,6 °

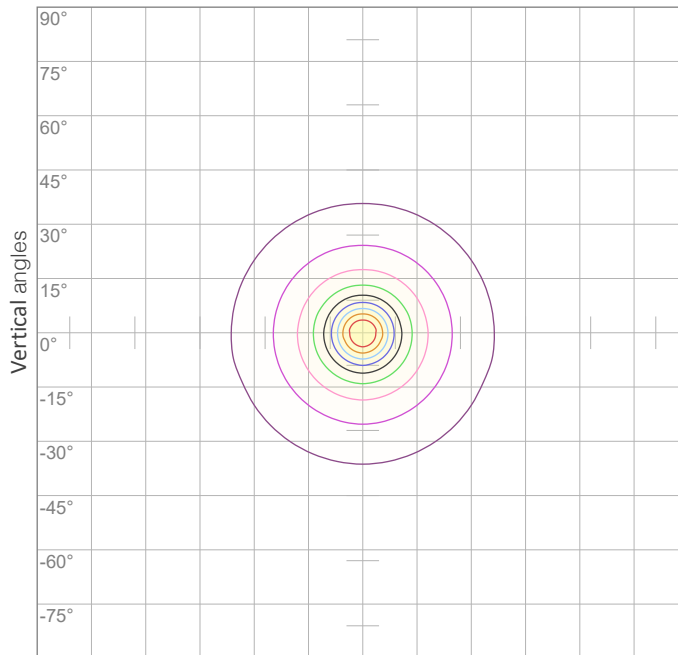
POLAR DIAGRAMS

ISO candela diagram

All product specifications, measurements, values and dimensions are subject to change without prior notice

Photometric Report

34066 - ACT Par 200W (cw-ww), , Ordercode

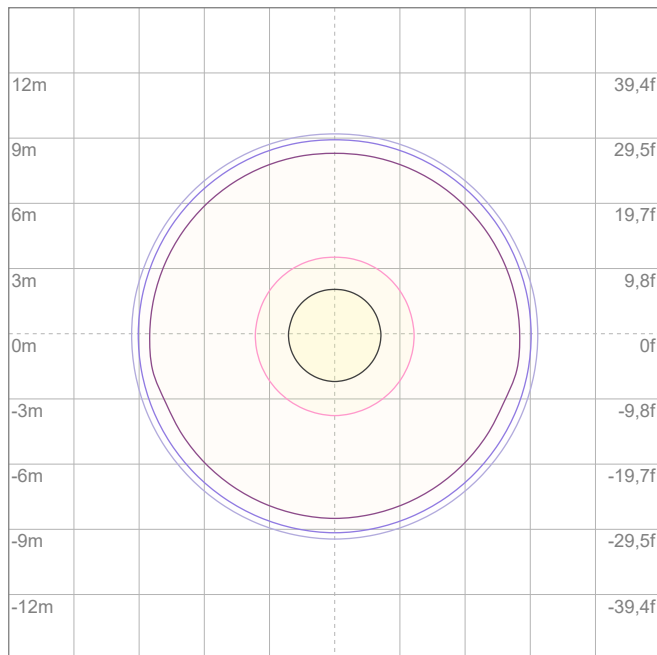


10%	2603 cd
20%	5207 cd
30%	7810 cd
40%	10414 cd
50%	13017 cd
60%	15620 cd
70%	18224 cd

Conditions:

Number of c-planes: {C_PLANES}

Candela at center: 26034 cd



ISO lux diagram

3%	7,81 lx
5%	13,0 lx
10%	26,0 lx
30%	78,1 lx
50%	130 lx

Conditions:

Number of c-planes: 2

Lux at center: 260 lx

Lux distribution on a surface when lamp is mounted at 10 meters from the surface.

Mounting height: 10 meters (33 feet)

CHROMATICITY REPORT



Photometric Report

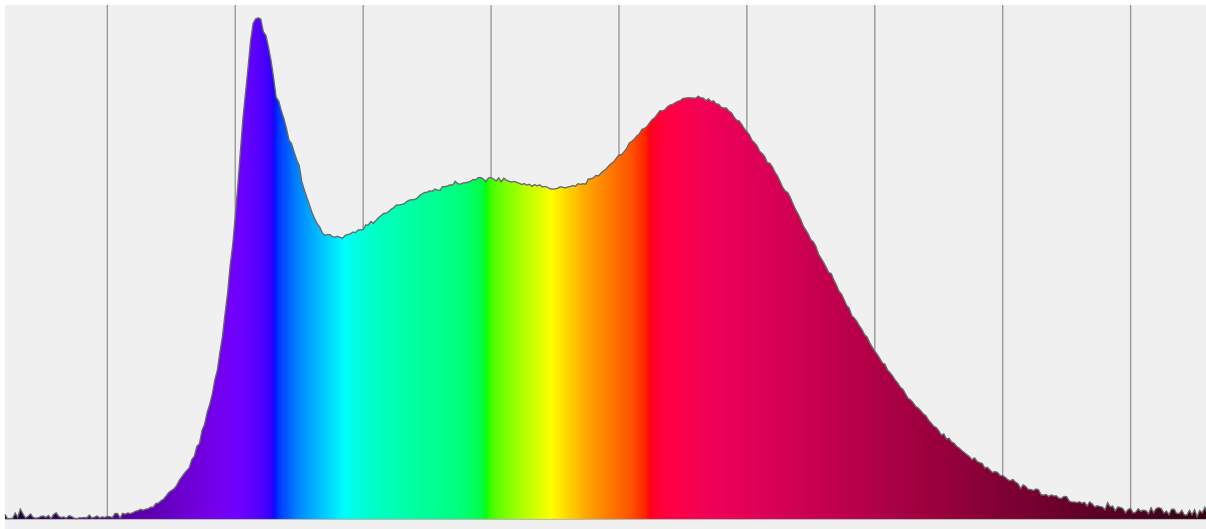
34066 - ACT Par 200W (cw-ww), , Ordercode

Total Lumens: 10508 lm
Peak Intensity: 26082 cd
Fixture Efficiency: 50 Lumen/Watt

Color Temperature: 4386 K
CRI: 92,2
CRI R9: 80,5
CQS: 92,6
TM-30 Rf: 88,4
TM-30 Rg: 97,5
 Δuv : -0,0010
1st Dominant Wavelength: 459 nm
2nd Dominant Wavelength: 631 nm



Spectral Distribution



Color

4386 K
CIE 1931 Coordinates:
X: 0,365 Y: 0,364

Color Temperature

4386 K

CRI

92,2

CHROMATICITY

CIE 1931 - Detail

4386 K

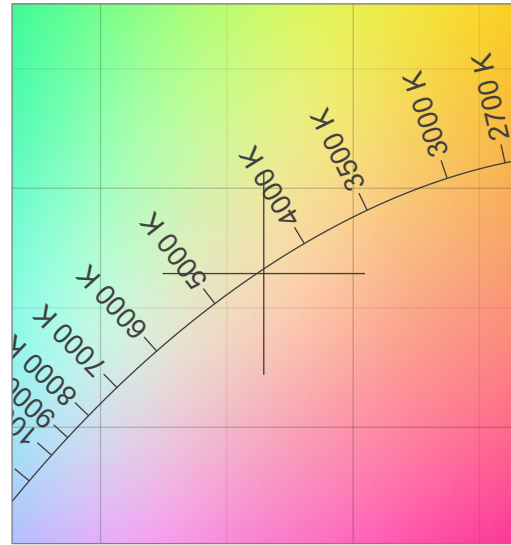
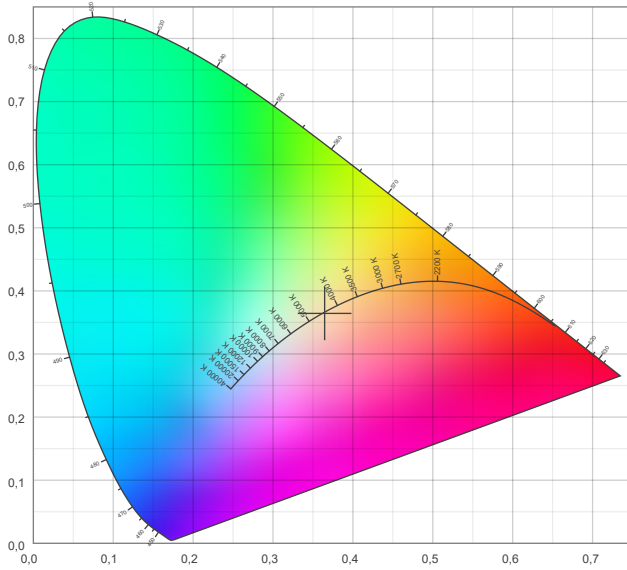
All product specifications, measurements, values and dimensions are subject to change without prior notice
X: 0,365
Y: 0,364

Photometric Report

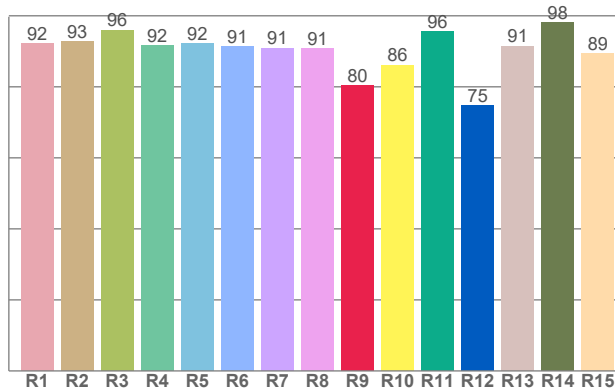


34066 - ACT Par 200W (cw-ww), , Ordercode

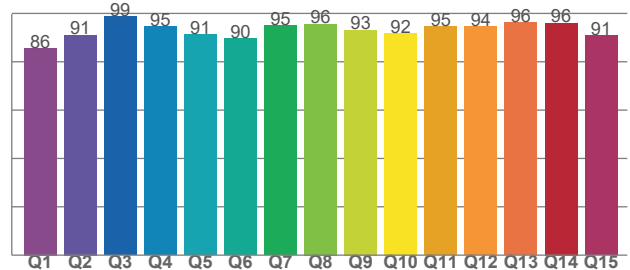
CIE 1931



CRI: 92,2 (R1-R8)



CQS: 92,6



TM-30-18 DETAILS

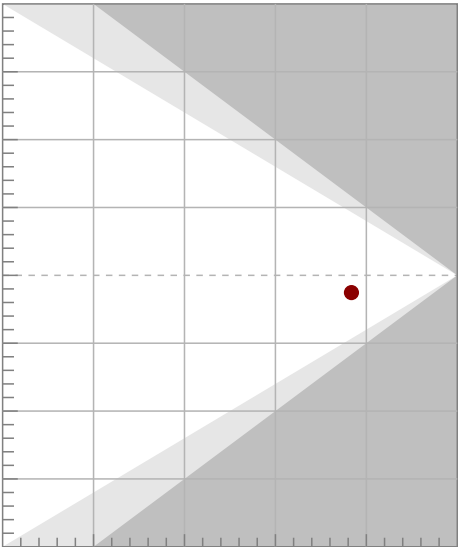
Photometric Report

34066 - ACT Par 200W (cw-ww), , Ordercode

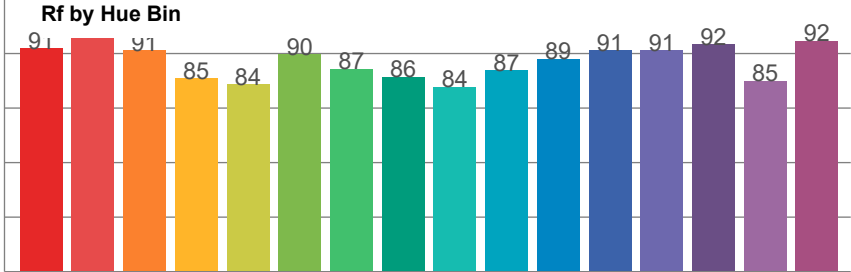
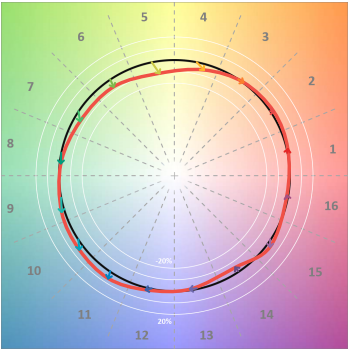
Rf 88,4
Fidelity index Rf

Rg 97,5
Gamut index Rg

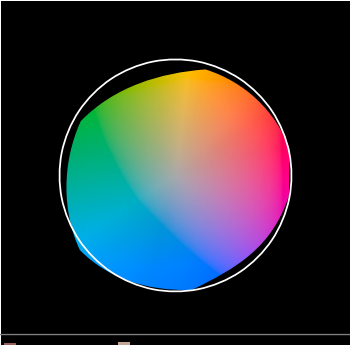
Hue Bin	Rf	Shifts (%)	
		Chroma	Hue
1	91	1%	3%
2	94	2%	-2%
3	91	0%	-5%
4	85	-5%	-7%
5	84	-11%	-5%
6	90	-7%	1%
7	87	-6%	6%
8	86	-2%	9%
9	84	2%	12%
10	87	4%	8%
11	89	6%	2%
12	91	2%	-5%
13	91	0%	-6%
14	92	-4%	0%
15	85	4%	-5%
16	92	-1%	2%



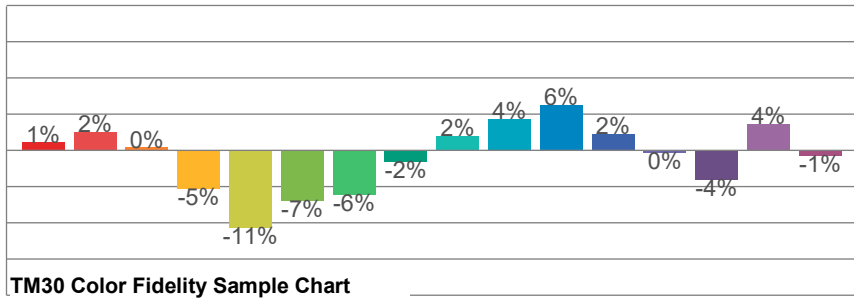
TM30-18 Color Vectors



TM30 Color Distortion



TM30 Chroma Shift



TM30 Color Fidelity Sample Chart

