

Photometric Report

34066 - ACT Par 200W (cw), , Ordercode



REPORT SUMMARY

Output

Total Lumens:	6716 Lumen
Peak Intensity:	16572 candela
Illuminance @ 5m:	663 lx
CRI:	94,0
CCT:	6553 K

Optical

Beam Angle (50%)	24,2 °
Field Angle (10%)	79,9 °

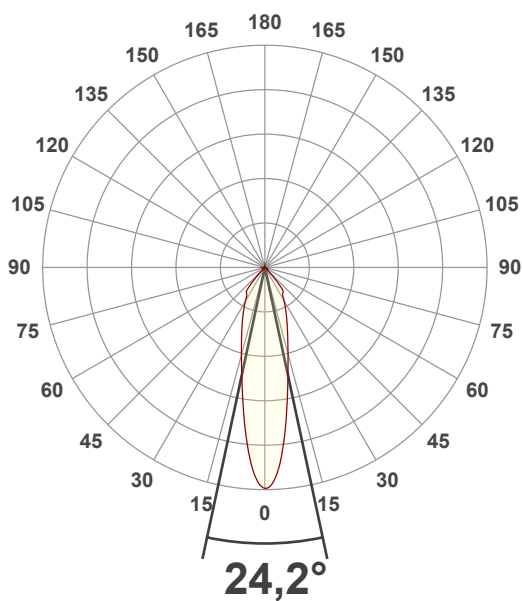
Conditions:

Power Supply:	225 V
Power:	107,7 W
Current:	0,529 A
Power Factor:	0,91

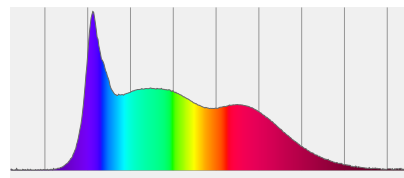


MEASUREMENTS

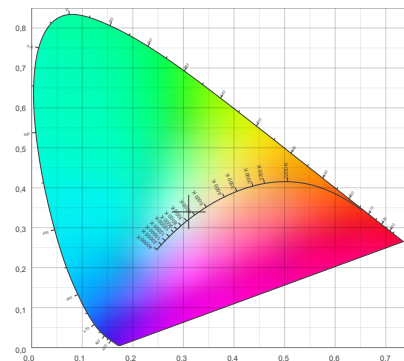
Angular Beam Distribution



Spectral Distribution



CIE 1931

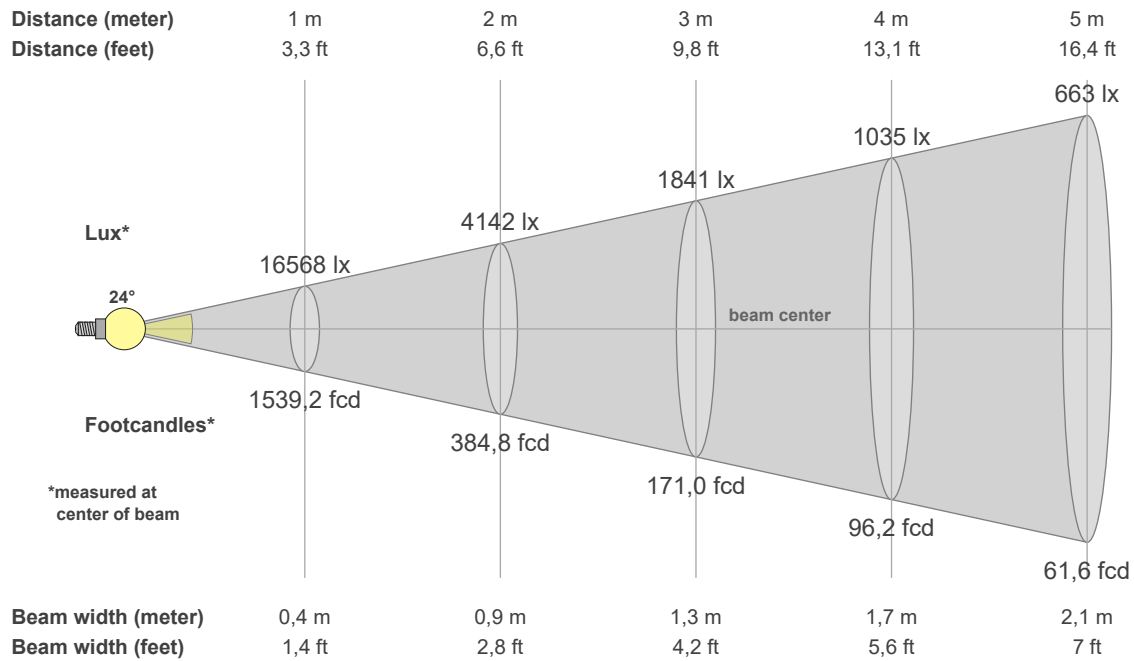


BEAM DETAILS

Photometric Report

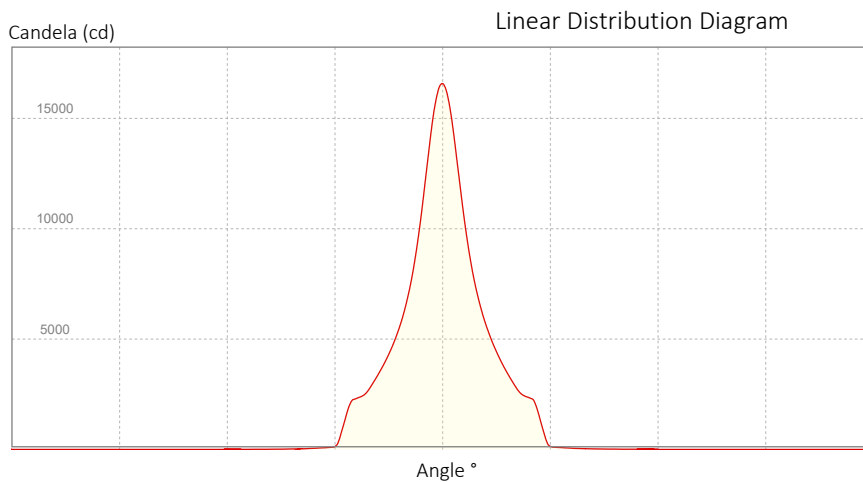


34066 - ACT Par 200W (cw), , Ordercode



Beam Illuminances from 1-20m

1m	2m	3m	4m	5m	6m	7m	8m	9m	10m	11m	12m	13m	14m	15m	16m	17m	18m	19m	20m
3,3ft	6,6ft	9,8ft	13,1ft	16,4ft	19,7ft	23ft	26,2ft	29,5ft	32,8ft	36,1ft	39,4ft	42,7ft	45,9ft	49,2ft	52,5ft	55,8ft	59,1ft	62,3ft	65,6ft
16568lx	4142lx	1841lx	1035lx	663lx	460lx	338lx	259lx	205lx	166lx	137lx	115lx	98lx	85lx	74lx	65lx	57lx	51lx	46lx	41lx
1539,2fcd	384,8fcd	171fcd	96,2fcd	61,6fcd	42,8fcd	31,4fcd	24fcd	19fcd	15,4fcd	12,7fcd	10,7fcd	9,1fcd	7,9fcd	6,8fcd	6fcd	5,3fcd	4,8fcd	4,3fcd	3,8fcd



Beam Angle (50%): 24,2 °
 Field Angle (10%): 79,9 °
 Cutoff Angle (3%): 86,7 °

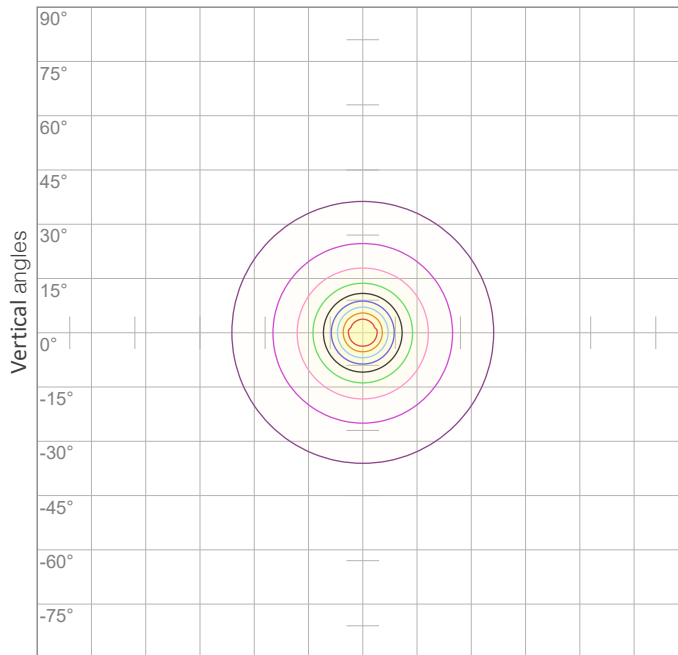
POLAR DIAGRAMS

ISO candela diagram

All product specifications, measurements, values and dimensions are subject to change without prior notice

Photometric Report

34066 - ACT Par 200W (cw), , Ordercode

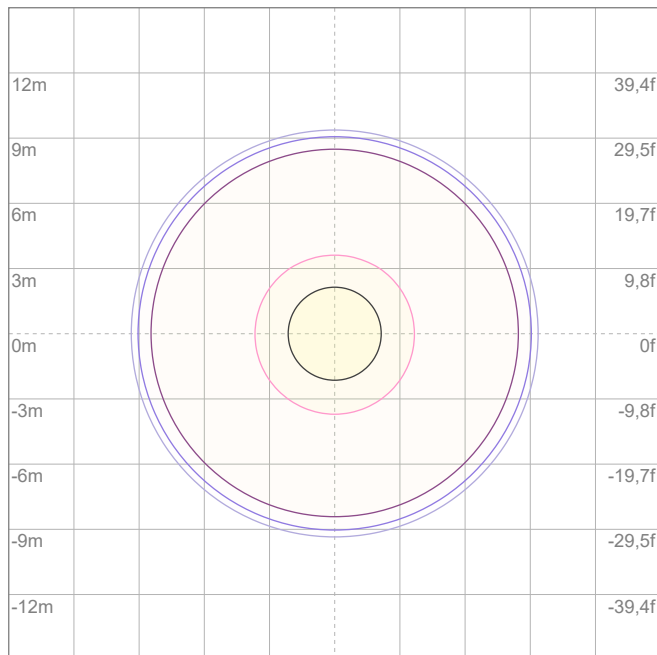


10%	1657 cd
20%	3314 cd
30%	4970 cd
40%	6627 cd
50%	8284 cd
60%	9941 cd
70%	11597 cd

Conditions:

Number of c-planes: {C_PLANES}

Candela at center: 16568 cd



ISO lux diagram

3%	4,97 lx
5%	8,28 lx
10%	16,6 lx
30%	49,7 lx
50%	82,8 lx

Conditions:

Number of c-planes: 2

Lux at center: 166 lx

Lux distribution on a surface when lamp is mounted at 10 meters from the surface.

Mounting height: 10 meters (33 feet)

CHROMATICITY REPORT



Photometric Report

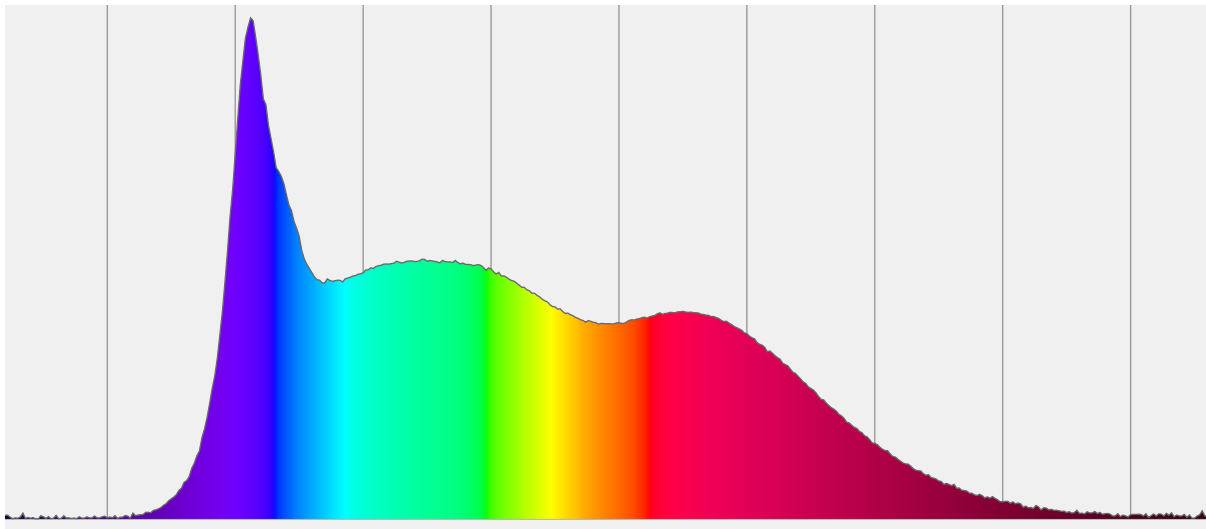
34066 - ACT Par 200W (cw), , Ordercode

Total Lumens: 6716 lm
Peak Intensity: 16572 cd
Fixture Efficiency: 62 Lumen/Watt

Color Temperature: 6553 K
CRI: 94,0
CRI R9: 96,1
CQS: 91,5
TM-30 Rf: 87,5
TM-30 Rg: 94,3
 Δuv : 0,0064
1st Dominant Wavelength: 456 nm
2nd Dominant Wavelength: 523 nm



Spectral Distribution



Color

6553 K
CIE 1931 Coordinates:
X: 0,310 Y: 0,340

Color Temperature

6553 K

CRI

94,0

CHROMATICITY

CIE 1931 - Detail

6553 K

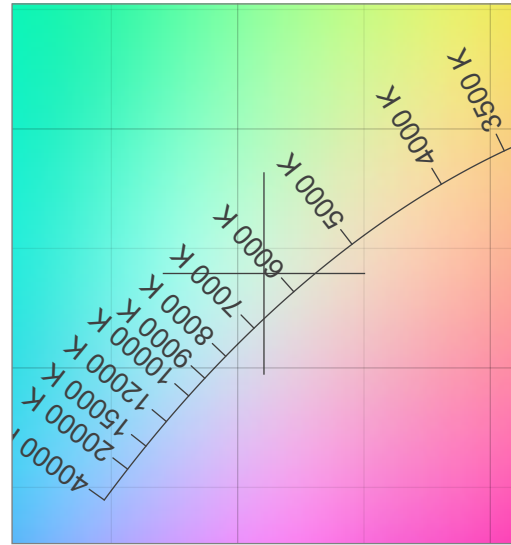
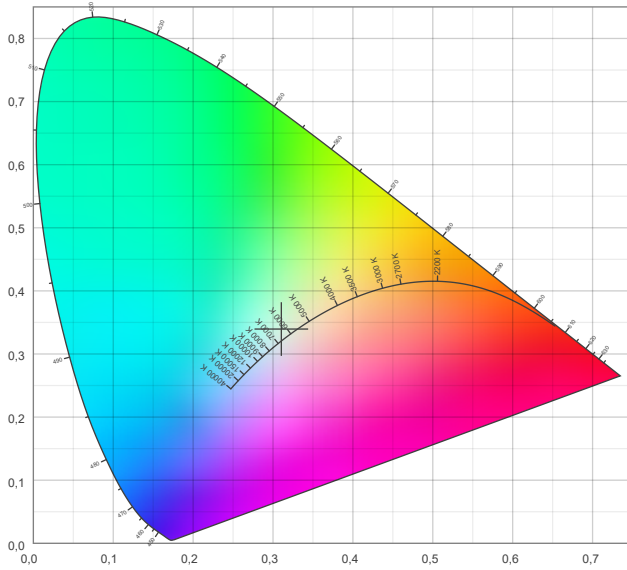
All product specifications, measurements, values and dimensions are subject to change without prior notice
X: 0,310
Y: 0,340

Photometric Report

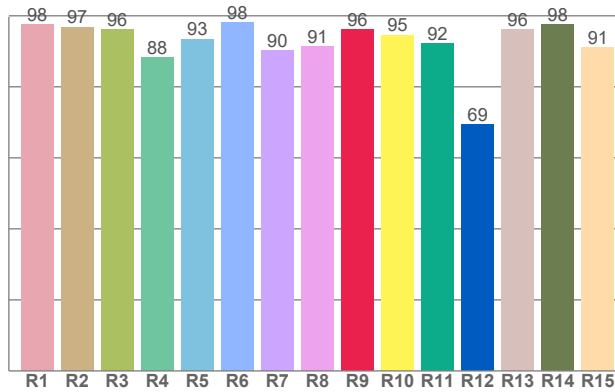
34066 - ACT Par 200W (cw), , Ordercode



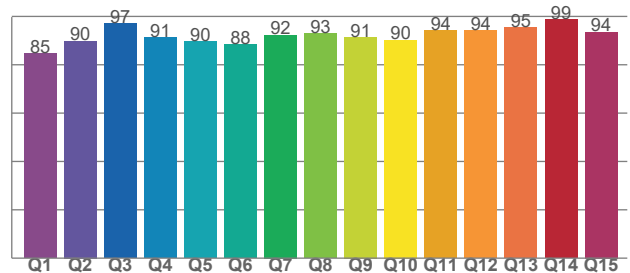
CIE 1931



CRI: 94,0 (R1-R8)



CQSI: 91,5



TM-30-18 DETAILS

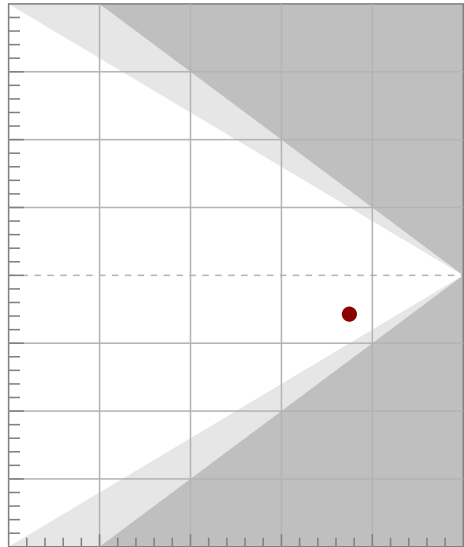
Photometric Report

34066 - ACT Par 200W (cw), , Ordercode

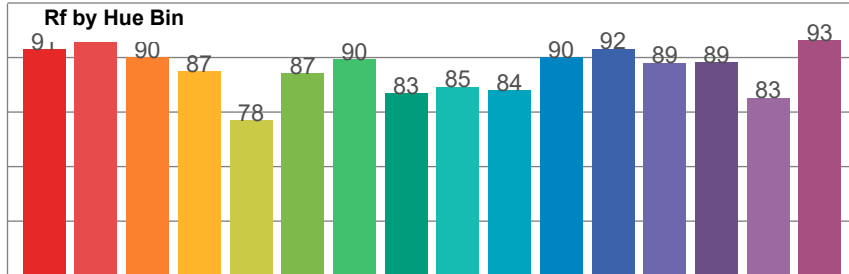
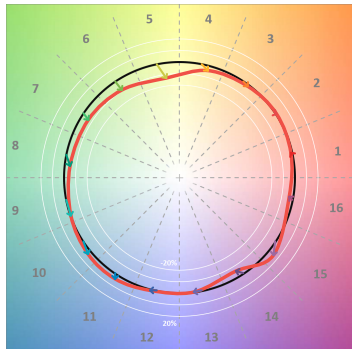
Rf 87,5
Fidelity index Rf

Rg 94,3
Gamut index Rg

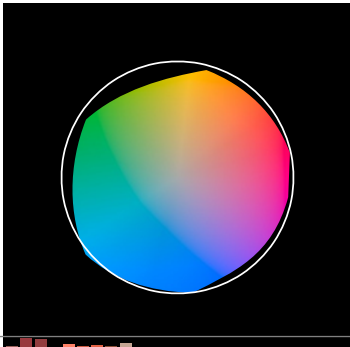
Hue Bin	Rf	Shifts (%)	
		Chroma	Hue
1	91	-1%	2%
2	96	1%	-1%
3	90	-1%	-6%
4	87	-4%	-6%
5	78	-13%	-6%
6	87	-9%	-1%
7	90	-7%	2%
8	83	-5%	9%
9	85	-1%	14%
10	84	3%	11%
11	90	4%	3%
12	92	1%	-6%
13	89	0%	-7%
14	89	-5%	-4%
15	83	6%	-11%
16	93	-3%	2%



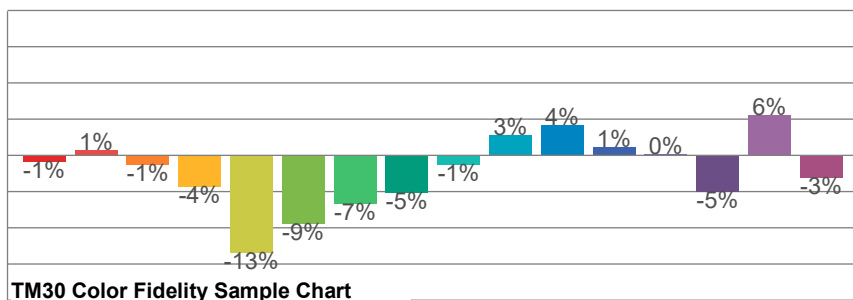
TM30-18 Color Vectors



TM30 Color Distortion



TM30 Chroma Shift



TM30 Color Fidelity Sample Chart

