

Photometric Report

34066 - ACT Par 200W (4000K - spot), , Ordercode



REPORT SUMMARY

Output

Total Lumens:	6430 Lumen
Peak Intensity:	72882 candela
Illuminance @ 5m:	2915 lx
CRI:	94,4
CCT:	4082 K

Optical

Beam Angle (50%)	12,7 °
Field Angle (10%)	22,8 °

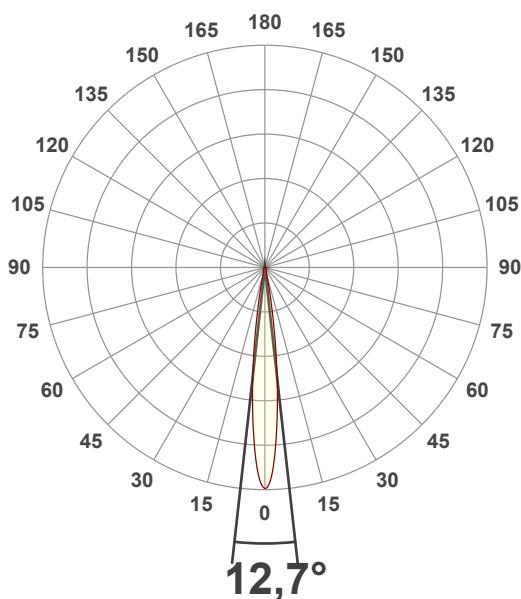
Conditions:

Power Supply:	225 V
Power:	130,9 W
Current:	0,629 A
Power Factor:	0,92

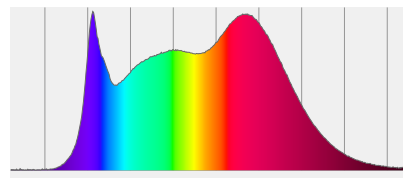


MEASUREMENTS

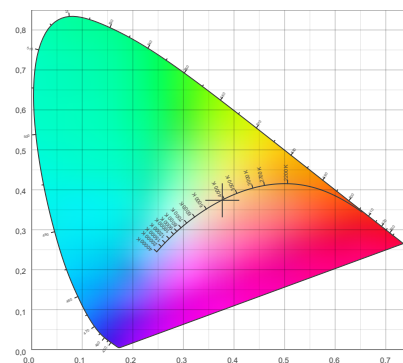
Angular Beam Distribution



Spectral Distribution



CIE 1931

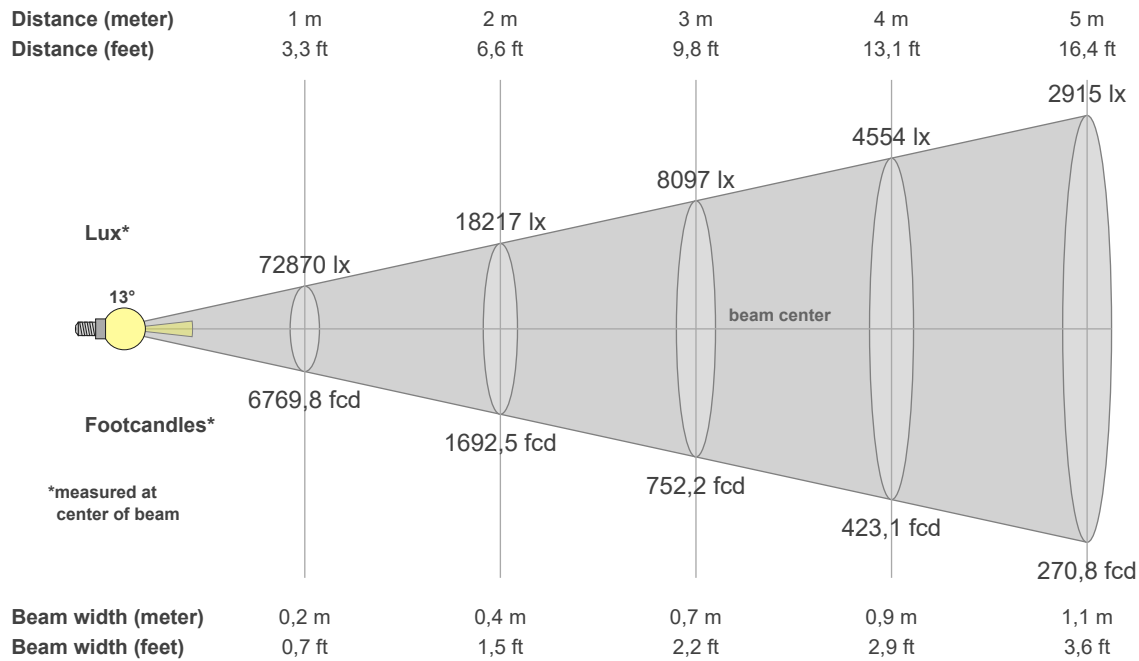


BEAM DETAILS

Photometric Report

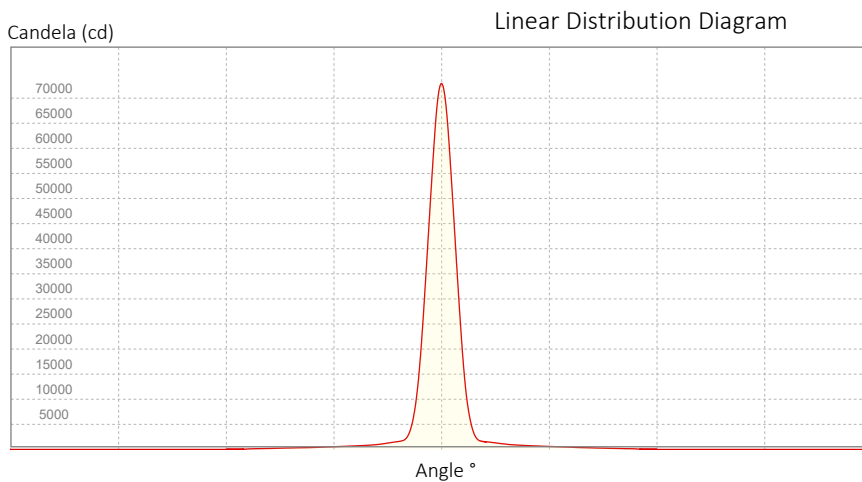


34066 - ACT Par 200W (4000K - spot), , Ordercode



Beam Illuminances from 1-20m

1m	2m	3m	4m	5m	6m	7m	8m	9m	10m	11m	12m	13m	14m	15m	16m	17m	18m	19m	20m
3,3ft	6,6ft	9,8ft	13,1ft	16,4ft	19,7ft	23ft	26,2ft	29,5ft	32,8ft	36,1ft	39,4ft	42,7ft	45,9ft	49,2ft	52,5ft	55,8ft	59,1ft	62,3ft	65,6ft
72870lx	18217lx	8097lx	4554lx	2915lx	2024lx	1487lx	1139lx	900lx	729lx	602lx	506lx	431lx	372lx	324lx	285lx	252lx	225lx	202lx	182lx
6769,8fcd	1692,5fcd	752,2fcd	423,1fcd	270,8fcd	188,1fcd	138,2fcd	105,8fcd	83,6fcd	67,7fcd	55,9fcd	47fcd	40,1fcd	34,5fcd	30,1fcd	26,4fcd	23,4fcd	20,9fcd	18,8fcd	16,9fcd



Beam Angle (50%): 12,7 °
 Field Angle (10%): 22,8 °
 Cutoff Angle (3%): 31,4 °

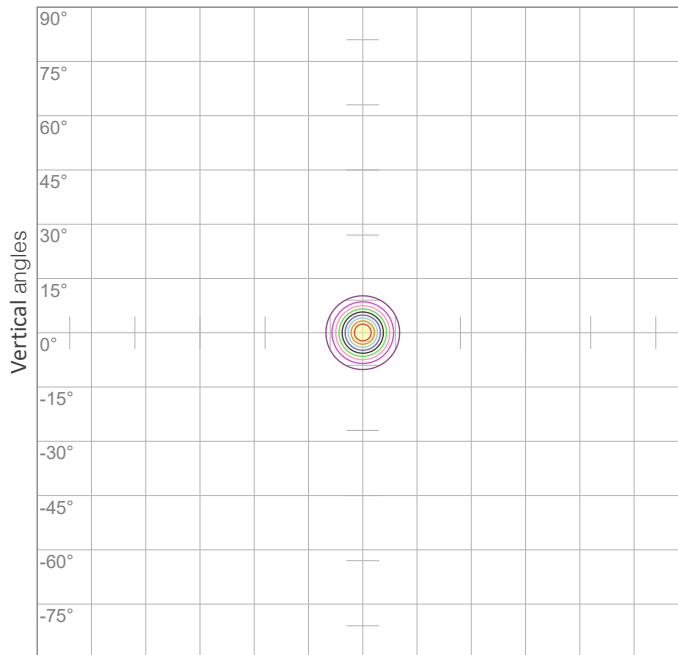
POLAR DIAGRAMS

ISO candela diagram

All product specifications, measurements, values and dimensions are subject to change without prior notice

Photometric Report

34066 - ACT Par 200W (4000K - spot), , Ordercode

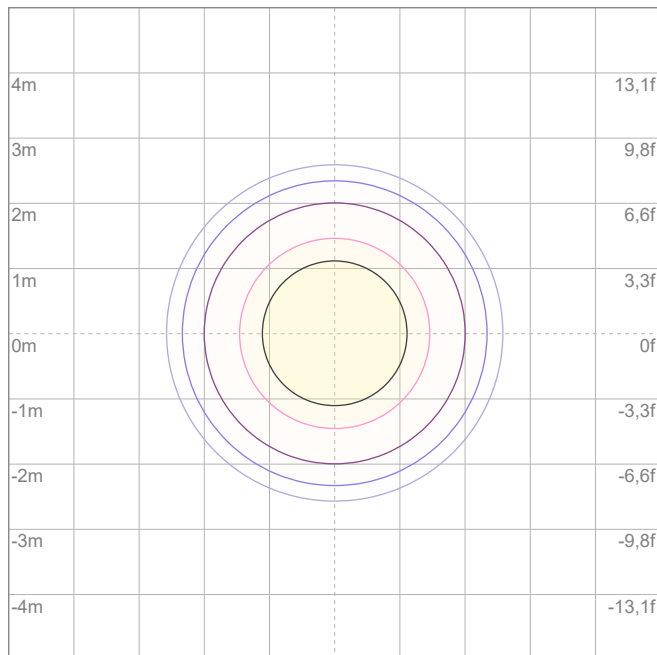


10%	7287 cd
20%	14574 cd
30%	21861 cd
40%	29148 cd
50%	36435 cd
60%	43722 cd
70%	51009 cd

Conditions:

Number of c-planes: {C_PLANES}

Candela at center: 72870 cd



ISO lux diagram

3%	21,9 lx
5%	36,4 lx
10%	72,9 lx
30%	219 lx
50%	364 lx

Conditions:

Number of c-planes: 2

Lux at center: 729 lx

Lux distribution on a surface when lamp is mounted at 10 meters from the surface.

Mounting height: 10 meters (33 feet)

CHROMATICITY REPORT



Photometric Report

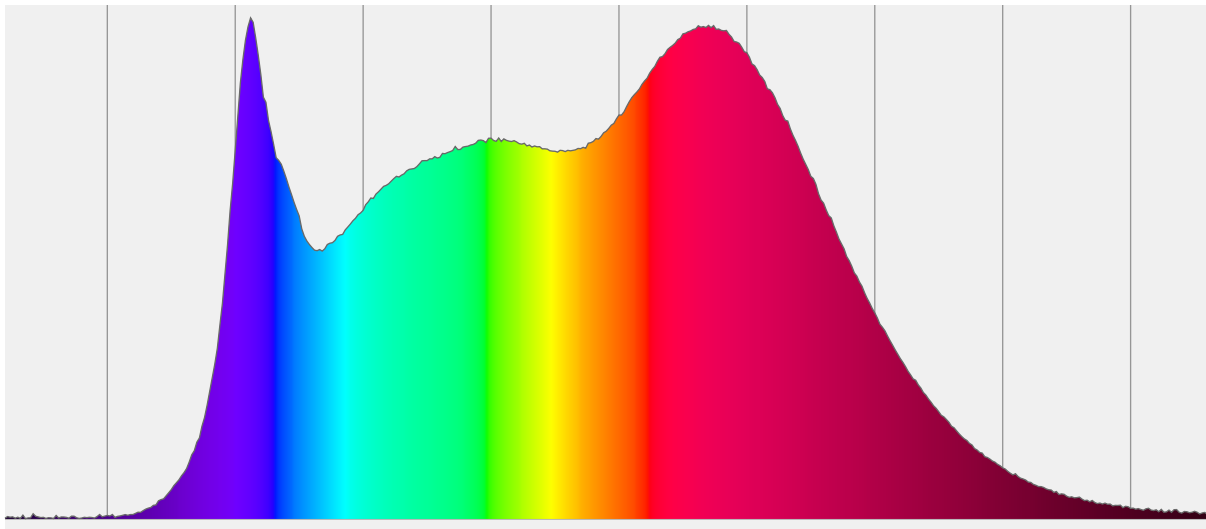
34066 - ACT Par 200W (4000K - spot), , Ordercode

Total Lumens: 6430 lm
Peak Intensity: 72882 cd
Fixture Efficiency: 49 Lumen/Watt

Color Temperature: 4082 K
CRI: 94,4
CRI R9: 79,7
CQS: 94,5
TM-30 Rf: 90,3
TM-30 Rg: 98,8
 Δuv : -0,0004
1st Dominant Wavelength: 456 nm
2nd Dominant Wavelength: 635 nm



Spectral Distribution



Color

4082 K
CIE 1931 Coordinates:
X: 0,377 Y: 0,374

Color Temperature

4082 K

CRI

94,4

CHROMATICITY

CIE 1931 - Detail

4082 K

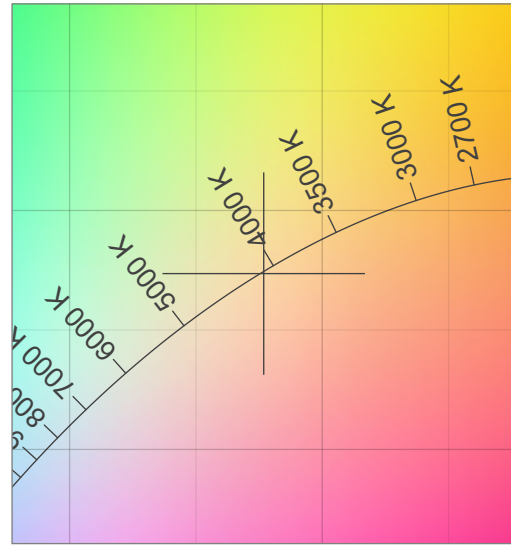
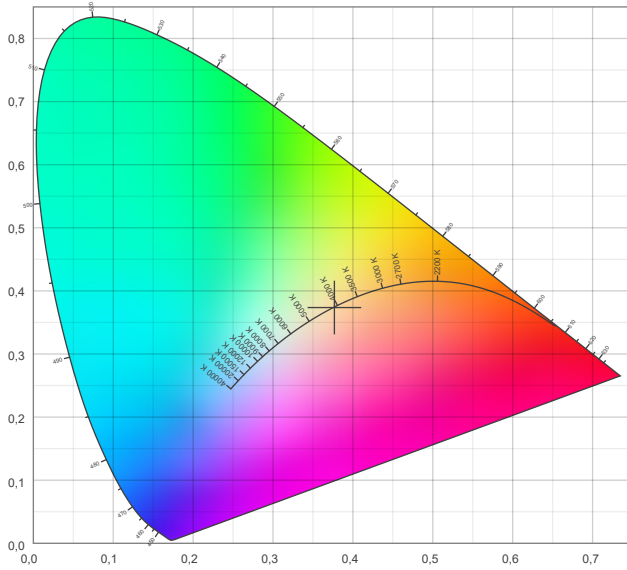
All product specifications, measurements, values and dimensions are subject to change without prior notice
X: 0,377
Y: 0,374

Photometric Report

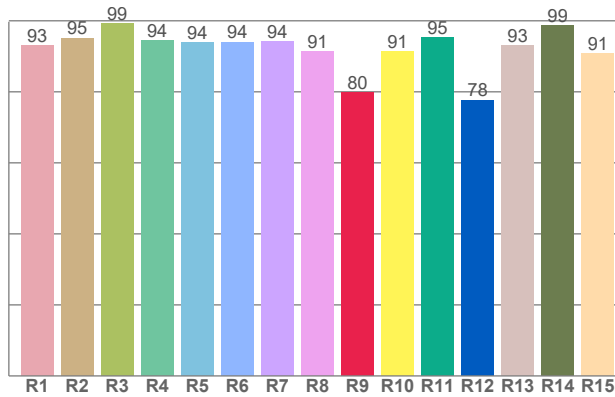


34066 - ACT Par 200W (4000K - spot), , Ordercode

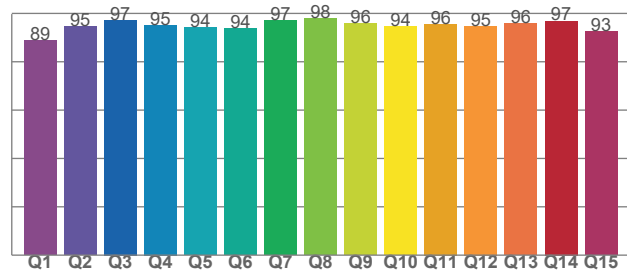
CIE 1931



CRI: 94,4 (R1-R8)



CQS: 94,5



TM-30-18 DETAILS

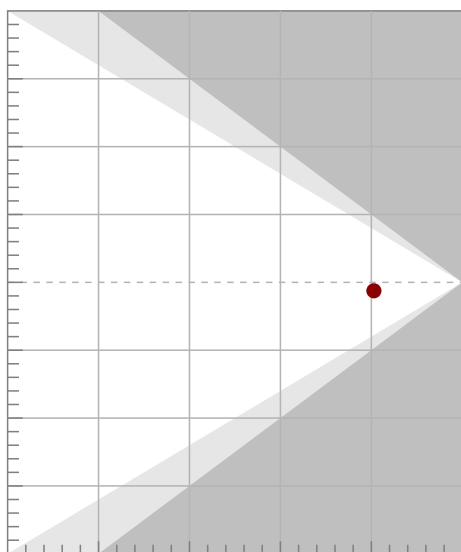
Photometric Report

34066 - ACT Par 200W (4000K - spot), , Ordercode

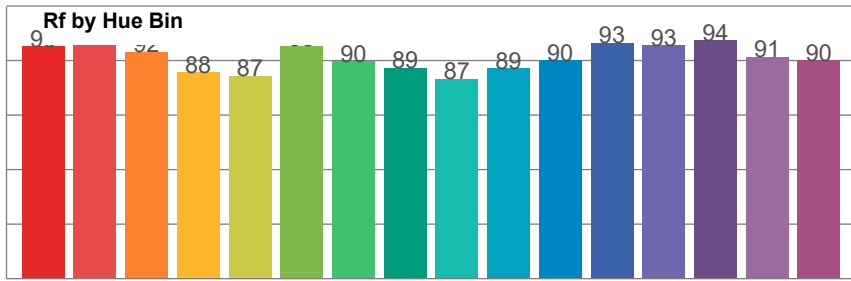
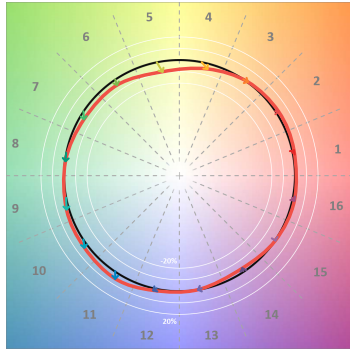
Rf 90,3
Fidelity index Rf

Rg 98,8
Gamut index Rg

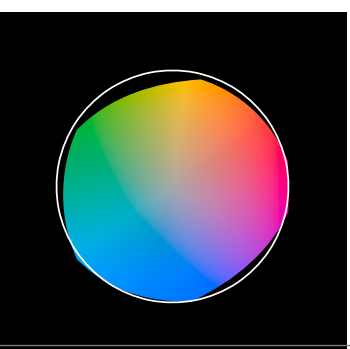
Hue Bin	Rf	Shifts (%)	
		Chroma	Hue
1	93	2%	2%
2	94	2%	-2%
3	92	0%	-4%
4	88	-5%	-6%
5	87	-9%	-3%
6	93	-5%	2%
7	90	-4%	6%
8	89	-1%	7%
9	87	2%	10%
10	89	3%	7%
11	90	5%	4%
12	93	2%	-3%
13	93	1%	-3%
14	94	-3%	1%
15	91	1%	-1%
16	90	2%	-2%



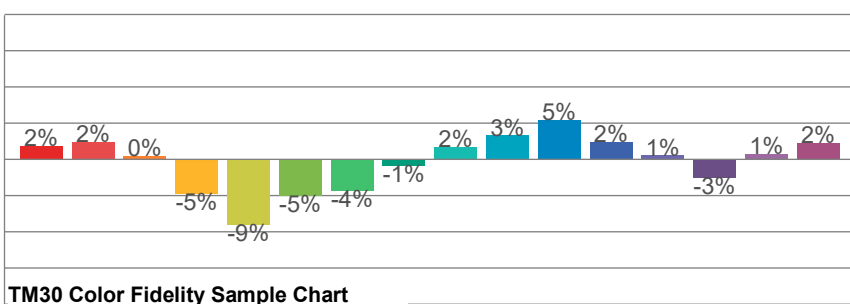
TM30-18 Color Vectors



TM30 Color Distortion



TM30 Chroma Shift



TM30 Color Fidelity Sample Chart

