

Photometric Report

34066 - ACT Par 200W (4000K), , Ordercode



REPORT SUMMARY

Output

Total Lumens:	6776 Lumen
Peak Intensity:	16942 candela
Illuminance @ 5m:	677 lx
CRI:	94,9
CCT:	4056 K

Optical

Beam Angle (50%)	23,8 °
Field Angle (10%)	79,8 °

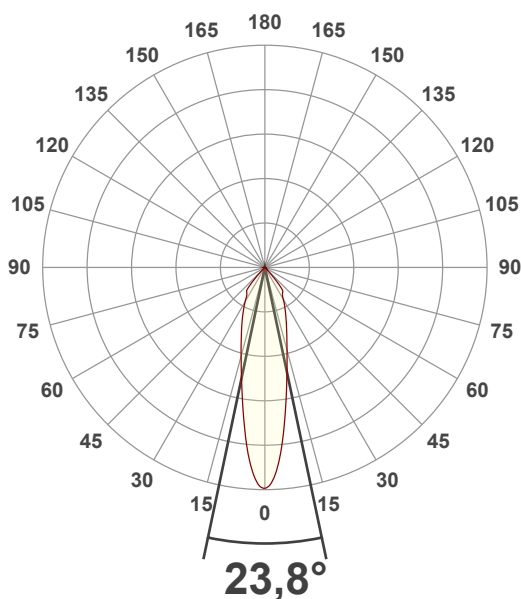
Conditions:

Power Supply:	224 V
Power:	131,6 W
Current:	0,636 A
Power Factor:	0,93

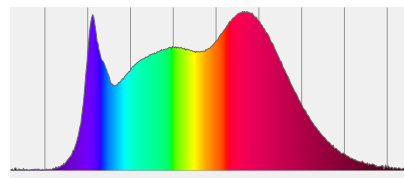


MEASUREMENTS

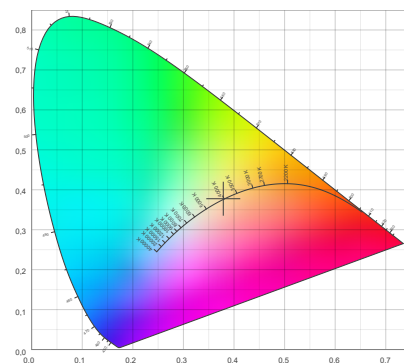
Angular Beam Distribution



Spectral Distribution



CIE 1931

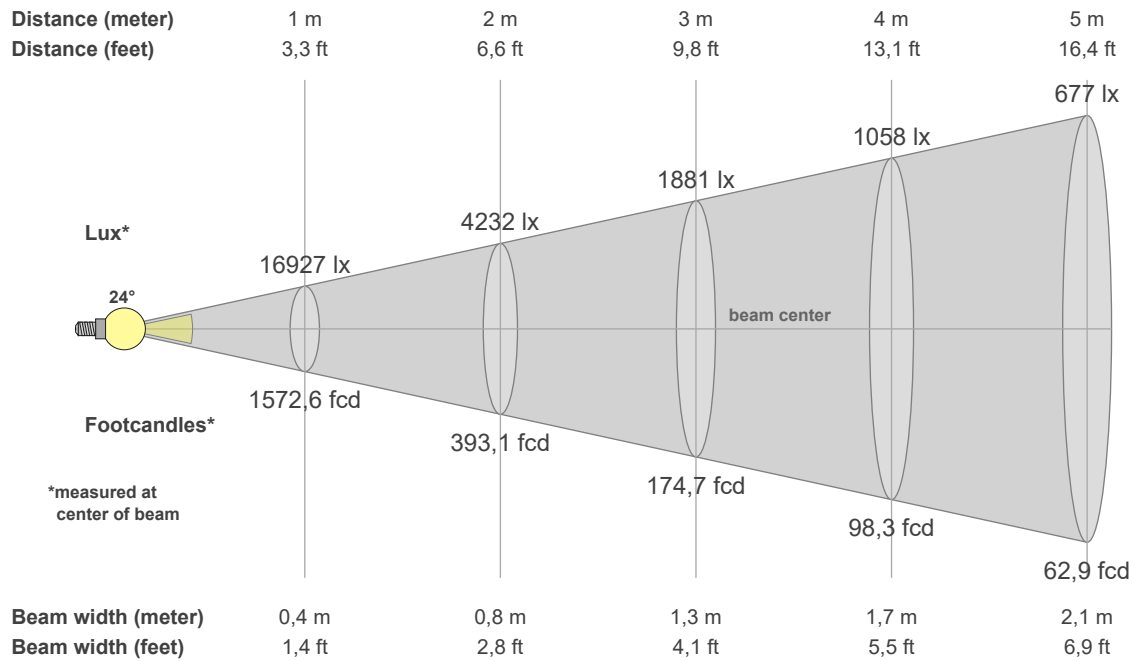


BEAM DETAILS

Photometric Report

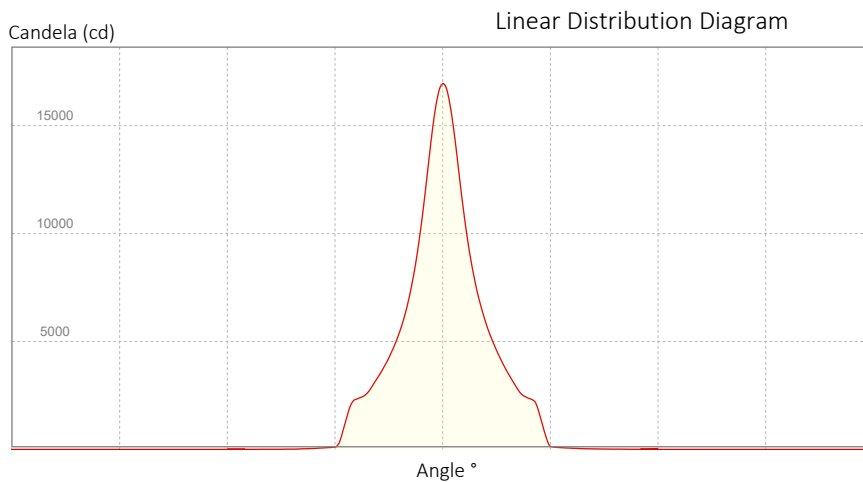


34066 - ACT Par 200W (4000K), , Ordercode



Beam Illuminances from 1-20m

1m	2m	3m	4m	5m	6m	7m	8m	9m	10m	11m	12m	13m	14m	15m	16m	17m	18m	19m	20m
3,3ft	6,6ft	9,8ft	13,1ft	16,4ft	19,7ft	23ft	26,2ft	29,5ft	32,8ft	36,1ft	39,4ft	42,7ft	45,9ft	49,2ft	52,5ft	55,8ft	59,1ft	62,3ft	65,6ft
16927lx	4232lx	1881lx	1058lx	677lx	470lx	345lx	264lx	209lx	169lx	140lx	118lx	100lx	86lx	75lx	66lx	59lx	52lx	47lx	42lx
1572,6fcd	393,1fcd	174,7fcd	98,3fcd	62,9fcd	43,7fcd	32,1fcd	24,6fcd	19,4fcd	15,7fcd	13fcd	10,9fcd	9,3fcd	8fcd	7fcd	6,1fcd	5,4fcd	4,9fcd	4,4fcd	3,9fcd



Beam Angle (50%): 23,8 °
 Field Angle (10%): 79,8 °
 Cutoff Angle (3%): 86,6 °

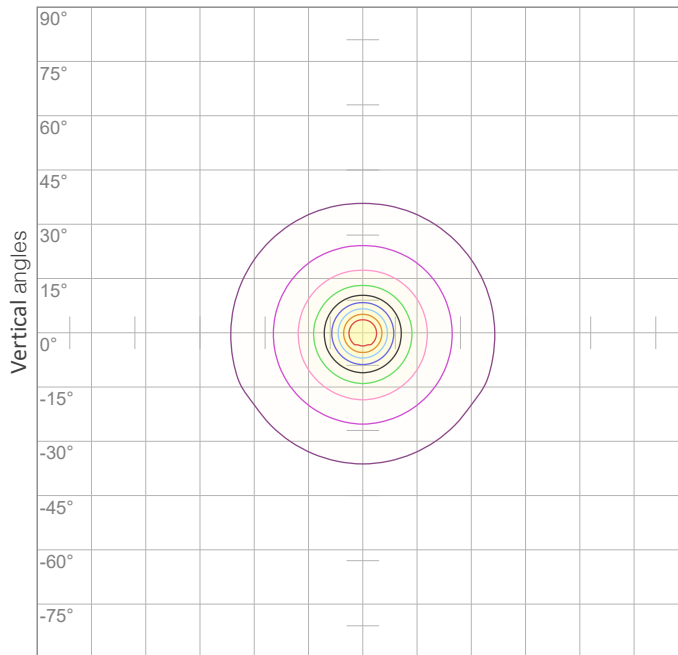
POLAR DIAGRAMS

ISO candela diagram

All product specifications, measurements, values and dimensions are subject to change without prior notice

Photometric Report

34066 - ACT Par 200W (4000K), , Ordercode

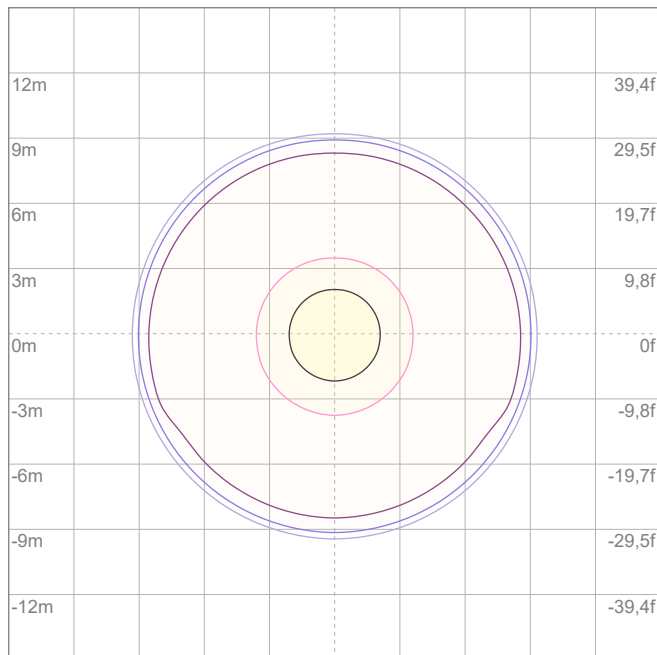


10%	1693 cd
20%	3385 cd
30%	5078 cd
40%	6771 cd
50%	8464 cd
60%	10156 cd
70%	11849 cd

Conditions:

Number of c-planes: {C_PLANES}

Candela at center: 16927 cd



ISO lux diagram

3%	5,08 lx
5%	8,46 lx
10%	16,9 lx
30%	50,8 lx
50%	84,6 lx

Conditions:

Number of c-planes: 2

Lux at center: 169 lx

Lux distribution on a surface when lamp is mounted at 10 meters from the surface.

Mounting height: 10 meters (33 feet)

CHROMATICITY REPORT



Photometric Report

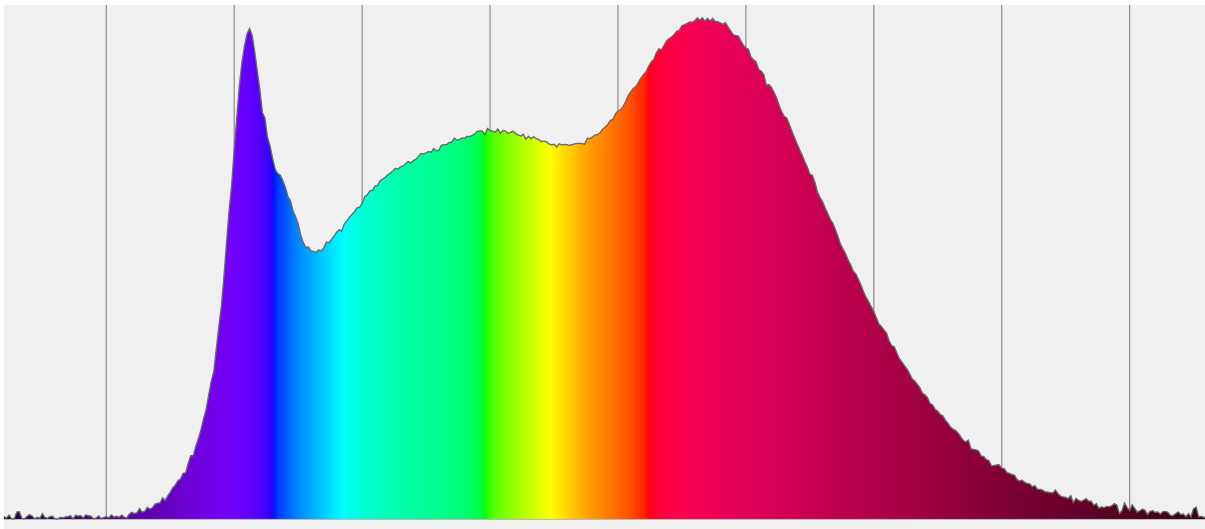
34066 - ACT Par 200W (4000K), , Ordercode

Total Lumens: 6776 lm
Peak Intensity: 16942 cd
Fixture Efficiency: 51 Lumen/Watt

Color Temperature: 4056 K
CRI: 94,9
CRI R9: 81,9
CQS: 94,3
TM-30 Rf: 90,2
TM-30 Rg: 98,4
 Δuv : 0,0009
1st Dominant Wavelength: 633 nm
2nd Dominant Wavelength: 456 nm



Spectral Distribution



Color

4056 K
CIE 1931 Coordinates:
X: 0,379 Y: 0,378

Color Temperature

4056 K

CRI

94,9

CHROMATICITY

CIE 1931 - Detail

4056 K

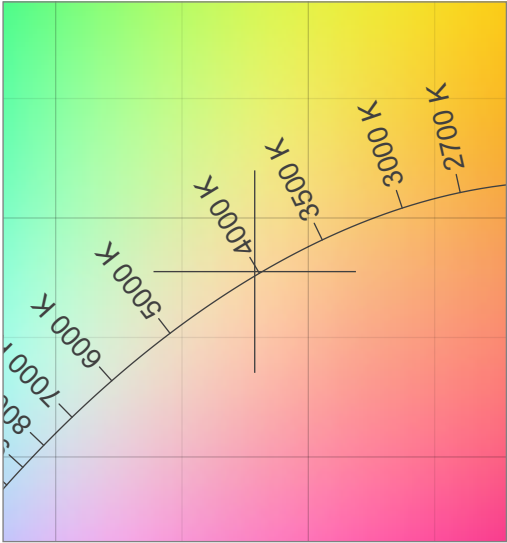
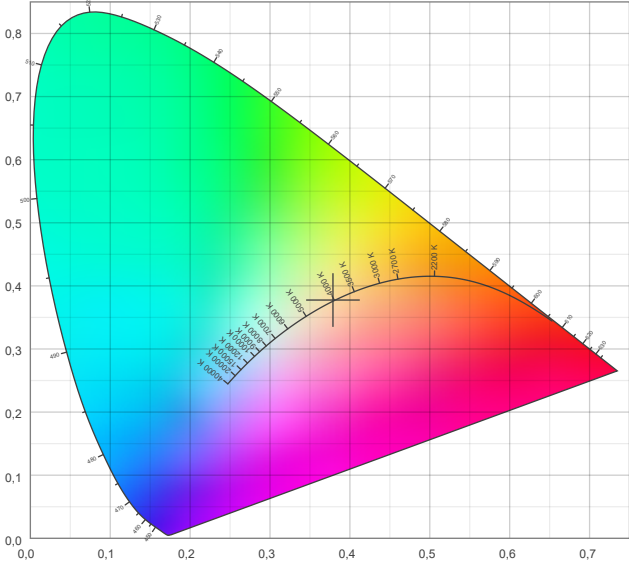
All product specifications, measurements, values and dimensions are subject to change without prior notice
X: 0,379
Y: 0,378



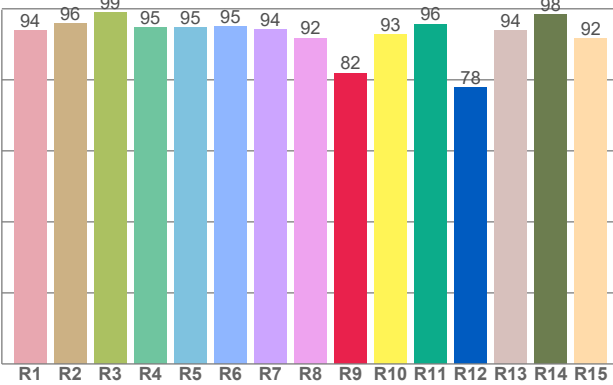
Photometric Report

34066 - ACT Par 200W (4000K), , Ordercode

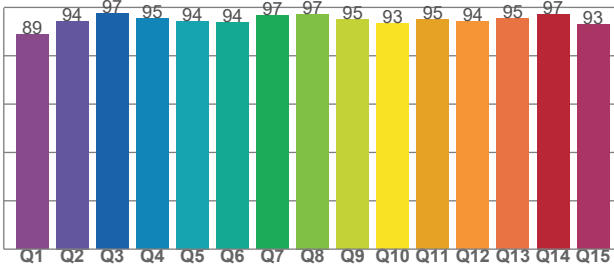
CIE 1931



CRI: 94,9 (R1-R8)



CQS: 94,3



TM-30-18 DETAILS

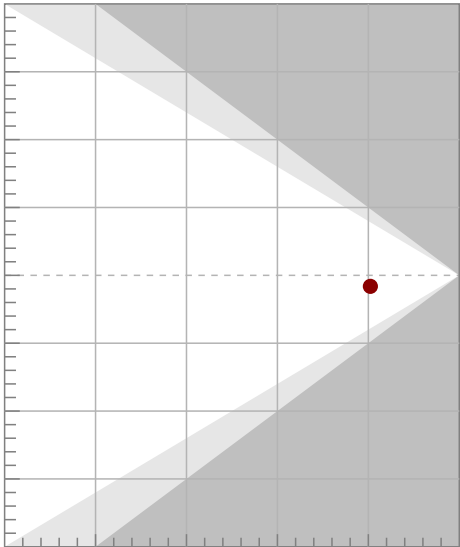
Photometric Report

34066 - ACT Par 200W (4000K), , Ordercode

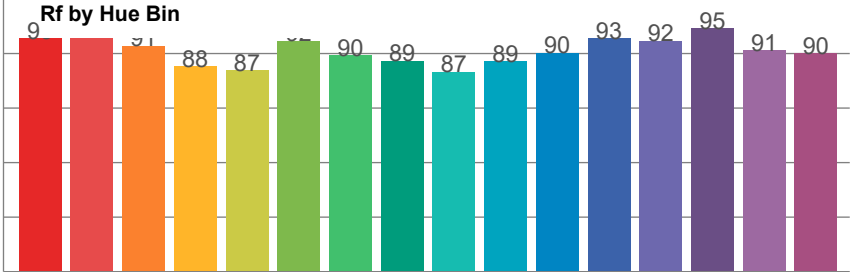
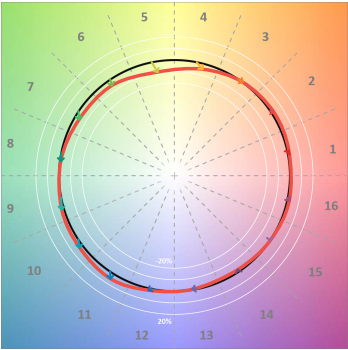
Rf 90,2
Fidelity index Rf

Rg 98,4
Gamut index Rg

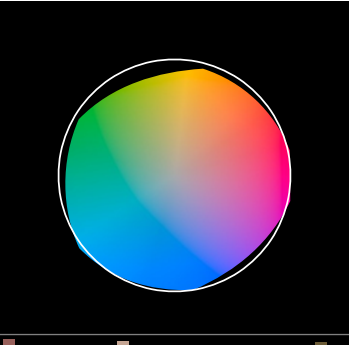
Hue Bin	Rf	Shifts (%)	
		Chroma	Hue
1	93	2%	2%
2	94	2%	-2%
3	91	0%	-5%
4	88	-5%	-6%
5	87	-9%	-3%
6	92	-5%	2%
7	90	-4%	6%
8	89	-1%	7%
9	87	1%	10%
10	89	3%	7%
11	90	5%	4%
12	93	2%	-2%
13	92	0%	-4%
14	95	-1%	0%
15	91	1%	-1%
16	90	2%	-2%



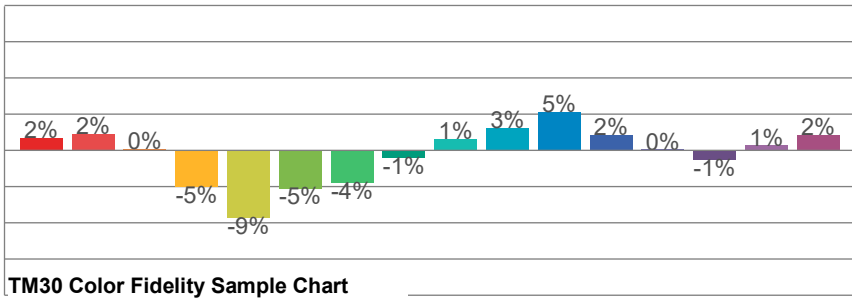
TM30-18 Color Vectors



TM30 Color Distortion



TM30 Chroma Shift



TM30 Color Fidelity Sample Chart

