



SPIDER V FAMILY

SPIDER V 30

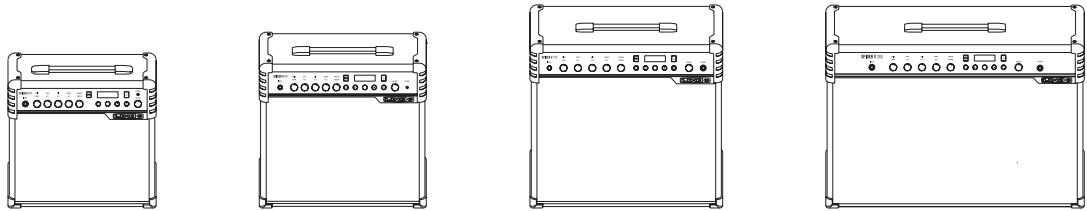
SPIDER V 60

SPIDER V 120

SPIDER V 240

PILOT'S GUIDE ►

MANUEL DE PILOTAGE
PILOTENHANDBUCH
MANUAL DEL PILOTO
パイロット・ガイド
新手指南



SPIDER V COMPARISON CHART

| Features | Spider V 30 | Spider V 60 | Spider V 120 | Spider V 240 |
|-----------------------|-------------|-------------|--------------|----------------------------|
| Amp Models | 78 | 78 | 78 | 78 |
| Cabinet Models | 23 | 23 | 23 | 23 |
| Effect Models | 101 | 101 | 101 | 101 |
| Amplifier Wattage | 30 watts | 60 watts | 120 watts | 240 watts (120 w/per side) |
| Mono/Stereo | Mono | Mono | Mono | Stereo |
| Speaker Size | 1 x 8" | 1 x 10" | 1 x 12" | 2 x 12" |
| Tweeter Configuration | 1 | 1 | 1 | 2 |
| XLR Direct Outs | No | No | Yes | Yes |
| USB Audio Interface | Yes | Yes | Yes | Yes |
| Headphone Output | 1/8" Stereo | 1/8" Stereo | 1/4" Stereo | 1/4" Stereo |
| FBV Support | Yes | Yes | Yes | Yes |
| Drum Loops | Yes | Yes | Yes | Yes |
| Metronome | Yes | Yes | Yes | Yes |
| Looper | No | Yes | Yes | Yes |
| RELAY Wireless Ready | No | Yes | Yes | Yes |

Overview

Welcome to the **SPIDER V** Pilot's Guide. This guide contains basic details of **SPIDER V** features and functionality.

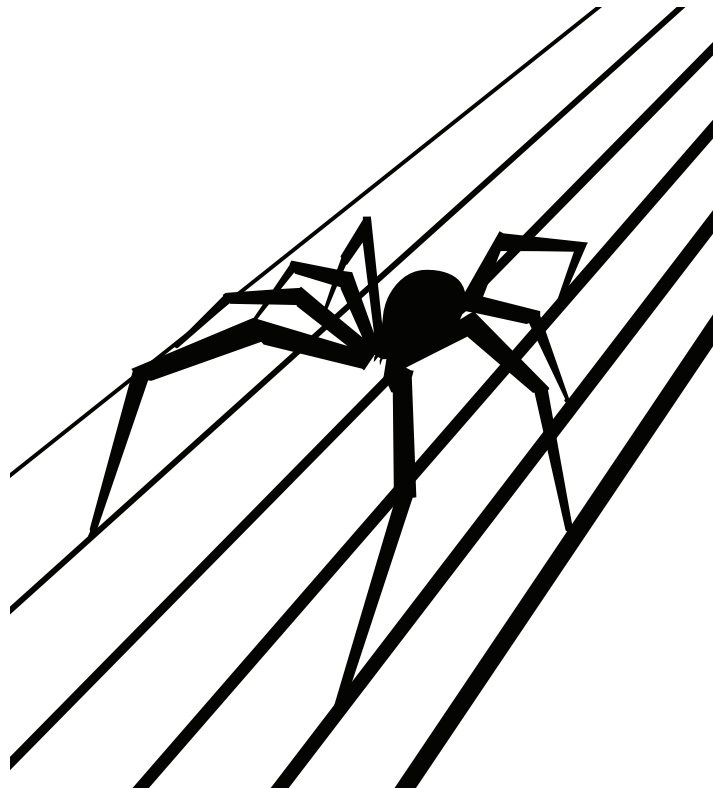
SPIDER V is the fifth generation guitar amp from the SPIDER Family. It features Line 6's diverse quality amp modeling in a compact combo. Here's an overview of some of the new features built into **SPIDER V**.

Features:

- Over 200+ amps and effects models
- Full range speaker system that delivers excellent tone for electric guitar, acoustics and music playback
- 8 simultaneous effects including 3 Smart FX
- Built-in **Line 6 RELAY** wireless receiver - compatible with **RELAY G10T*** (sold separately)
- XLR direct outputs*
- **FBV** Pedal support for **Line 6 FBV 3**, **FBV Shortboard MKII** and **FBV EXPRESS MKII** (sold separately)
- Built-in tuner, metronome, drum loops, demo riffs, and Quick Looper*
- Enhanced presets for acoustic guitars
- USB Audio Interface - playback with a Mac/PC/iOS and Android**
- Upgradeable firmware using **Line 6 Updater** for Mac and PC, or **SPIDER Remote** app for iOS and Android
- Connect iOS devices directly with a standard Lightning cable
- Stereo headphone output
- 1/8" Aux Input for MP3 or other audio sources

SPIDER Remote App

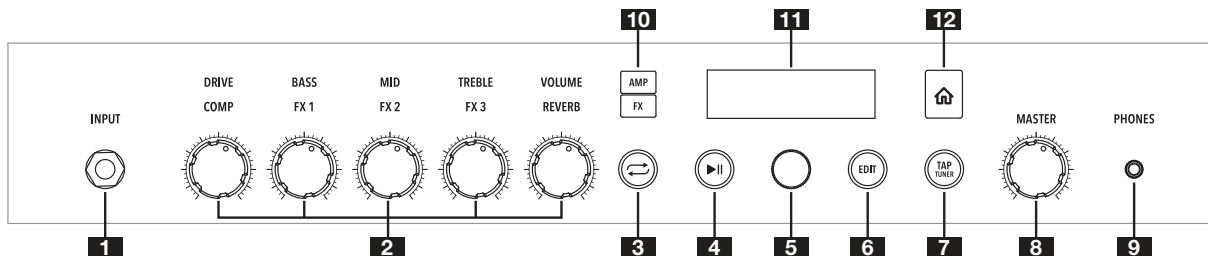
- Access and search for thousands of tones on the cloud
- Create, save and share unlimited guitar tones
- Control every aspect of your tone to get the perfect sound



*Available on select models. Please see the comparison chart to see which features are on each model of Spider V.

**Requires Android OS 5.0+ or newer with High Performance Audio. Check line6.com/android for more information.

Front Panel Controls

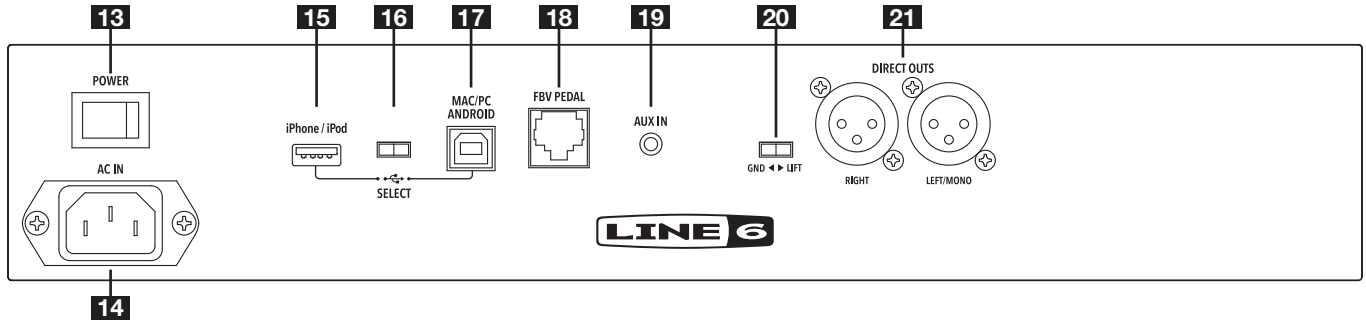


- 1. INPUT Jack** – Plug in your guitar here. A **RELAY G10T** can be recharged by inserting it into the input jack on **SPIDER V***.
- 2. AMP/FX Knobs** – AMP LAYER - **DRIVE** is like the volume or gain knob on other amps; controls how much “dirt” or “distortion” you get in your sound. **BASS**, **MID** and **TREBLE** controls are customized for each Amp Model to give you optimal tone control. When you turn any of these knobs while the Amp Layer is active, the display will briefly show the **DRIVE**, **BASS**, **MID**, **TREBLE**, and **VOLUME** settings.

FX LAYER - **FX1**, **FX2**, and **FX3** are the assignable Smart FX with colors: Yellow for Distortion or Compression; Blue for Modulation; Green for Delay; Purple for Pitch and Synth. **COMP** can be used as a volume booster or leveler. **REVERB** can be turned up/down to taste and there is a variety of models to choose from. These effects can be assigned from the Edit Menu or by using the **SPIDER Remote** app. When you turn any of these knobs while the FX Layer is active, the display will briefly show the amount of the associated effect being applied to your sound.
- 3. Quick Loop Button*** – Press to enter/exit Quick Looper Mode.
- 4. Play/Pause Button** – Start and Stop Metronome/Drum Loops or Guitar Demo Riffs.
- 5. Rotary/Push Button Knob** – While in preset view, this knob is used for controlling the current preset. Press and Hold to save the current

- preset. While in Edit mode, use this knob to scroll the parameter list and press to select a parameter for editing. Turn the knob to change the parameter value and press again to return to scrolling. While the Playback Screen is open, use it to select different drum loops, demo riffs, or playback parameters.
- 6. EDIT Button** – Press to open a preset and display its effect blocks and parameters for editing.
 - 7. TAP/TUNER Button** – Press and hold to engage the Tuner. Press again to exit. Tap this button in time with the music to set the tempo of delay and modulation effects.
 - 8. MASTER Volume Knob** – Set overall volume of the amplifier and headphone output (when connected).
 - 9. PHONES Output** – Connect a pair of stereo headphones here. The speakers are muted when headphones are connected. This jack also doubles as a direct output. Use a stereo TRS cable to connect to a mixer or recording device.
 - 10. AMP and FX Buttons** – Press either to select the AMP Layer or FX Layer.
 - 11. LCD Display** – Displays the current preset, knob positions, Smart FX values and the editor parameters.
 - 12. Home Button** – Pressing this button will return the LCD display to the Home Screen from any other menu.

Rear Panel Connections



- 13. POWER Switch** – Turns **SPIDER V** on/off.
- 14. AC IN** – The included power cable connects here. See the rear panel markings for electrical information.
- 15. iPhone / iPod USB A Port** – Connect an iOS device here using a standard Lightning cable to edit tones, update, playback and record audio. This port will power your device. **DO NOT** plug in any non-iOS device to this port.
- 16. USB Select Switch** – Toggles between the USB-A and USB-B ports. Only one port may be used at a time.
- 17. MAC/PC/ANDROID USB B Port** – Connect a Mac/PC or Android device (with OTG adapter) to edit tones, update, playback and record audio.
- 18. FBV PEDAL** – Connect a **Line 6 FBV Express MkII** controller for preset switching, tap tempo, volume/wah control and tuner capabilities. Connect a **Line 6 FBV 3** or **Line 6 FBV Shortboard MKII** controller for preset switching, effects on/off control, wah/volume pedals, Quick Looper control, tuner and tap tempo.
- 19. AUX IN** – Auxiliary audio input for routing sound into the power amp and speakers.

20. GND-LIFT* – Ground lift switch for XLR Direct Outputs.

21. DIRECT OUTS* – Connect XLR cables to route audio to a PA, mixer or audio interface. The output level is not attenuated by the **MASTER Volume Knob**, except when headphones are connected.

Note: When connecting **XLR DIRECT OUTS** to other equipment (i.e. Mixers, Recording Interfaces, etc), the **SPIDER V** is not intended to be used with phantom power. If phantom power must be applied to the **SPIDER V XLR DIRECT OUTS**, ensure that the **GND-LIFT** switch is switched to “GND” to avoid phantom power appearing between the **GUITAR INPUT**'s ground and ground reference of equipment supplying phantom power.

*Available on select models. Please see the comparison chart to see which features are on each model of Spider V.

Changing Presets

1. Press the **HOME BUTTON** at any time to return to the Home Screen. The Home Screen displays the preset name and location.
2. Turn the **ROTARY KNOB** below the LCD screen to cycle through the list of presets.

Saving Presets

1. Press and hold the **ROTARY KNOB** until the Save Screen appears.
2. Turn the **ROTARY KNOB** to select characters for editing the preset name.
3. Press the **ROTARY KNOB** to highlight the character.
4. Turn the **ROTARY KNOB** to change character. Note: You can press the **TAP/TUNER BUTTON** to switch between uppercase, lowercase and numerals/symbols.
5. To finish saving the preset, press and hold the **ROTARY KNOB**.

Changing Preset Locations

1. Press and hold the **ROTARY KNOB** until the Save Screen appears.
2. Turn the **ROTARY KNOB** so that the underscore is on the number/bank, press the knob and turn to choose the destination. This will overwrite the preset in the destination preset location.

Changing Amp Models

1. Press the **AMP BUTTON** to select the AMP Layer.
2. Press the **AMP BUTTON** again to open the amp list.
3. Turn the **ROTARY KNOB** to select different amp models.

Using Smart FX

SPIDER V has a built-in compressor and reverb effect as well as 3 assignable Smart FX per preset.

The assignable Smart FX are Drives (yellow), Modulation (blue), Delay (green), Pitch/Synth (purple).

1. Press the **FX BUTTON** to select the FX Layer. The labels on the front panel will light up with the colors associated with each effect type.
2. Turn any of the 5 knobs to increase or decrease the amount of the effect. The amount of the effect is shown on the LCD Display.

Changing FX Models

1. Press the **FX BUTTON** to select the FX Layer.
2. Turn the **ROTARY KNOB** to highlight which effect you wish to change.
3. Press the **FX BUTTON** again to open the FX LIST
4. Turn the **ROTARY KNOB** to cycle thru the FX models.
5. Press the **ROTARY KNOB** or the **HOME BUTTON** to exit.

Changing FX Models (Short Cut)

1. Press the **FX BUTTON** to select the FX Layer.
2. Turn the knob associated with the effect you wish to change. The amount of the effect is shown on screen, along with the name of the effect, and times out after 3-5 seconds.
3. Turn the **ROTARY KNOB** to change the FX model.
4. Press the **HOME BUTTON** to exit the Smart FX Screen, or wait for it to time out.

Bypass Smart FX

1. Press the **FX BUTTON** to select the FX Layer.
2. Turn the **ROTARY KNOB** to highlight which effect you wish to bypass.
3. Press the **ROTARY KNOB** to bypass the highlighted effect.
4. Press the **HOME BUTTON** to exit.

Using the Quick Looper*

To enter Quick Looper Mode, press the **QUICK LOOP BUTTON**.

To record a loop:

1. To begin recording, press the **QUICK LOOP BUTTON** to set the loop start.
2. To start playback, press the **QUICK LOOP BUTTON** to set the loop end.
3. Double-Press the **QUICK LOOP BUTTON** to stop playback.

To overdub:

1. When the loop is in playback press the **QUICK LOOP BUTTON** to set the overdub start point.
2. Press the **QUICK LOOP BUTTON** to end overdub and start playback.
3. Double-Press the **QUICK LOOP BUTTON** to stop playback.

To stop playback, double-press the **QUICK LOOP BUTTON**.

To erase the loop, press and hold the **QUICK LOOP BUTTON** to erase the loop content.

Play Drum Loops

1. Press the **PLAY/PAUSE BUTTON** to enter the Playback Screen.
2. Turn the **ROTARY KNOB** to scroll to the icon on the left and press to change it to the Musical Notes icon.
3. Use the **ROTARY KNOB** to highlight the Drum Loop parameters to select which groove will be played, and control its volume.
4. Press the **PLAY/PAUSE BUTTON** to start and stop the Drum Loops.

Start the Metronome

1. Press the **PLAY/PAUSE BUTTON** to enter the Playback Screen.
2. Turn the **ROTARY KNOB** to scroll to the icon on the left and press the knob to change it to the Metronome icon.
3. Press the **PLAY/PAUSE BUTTON** to start and stop the metronome.
4. Press the **HOME BUTTON** to exit.

Play Audition Samples

1. Press on the **PLAY/PAUSE BUTTON** to enter the Playback Screen.
2. Turn the **ROTARY KNOB** to scroll to the icon on the left of the screen. Press the **ROTARY KNOB** to change it to the Guitar/Tape icon.
3. Use the **ROTARY KNOB** to highlight the "Demo Riff" parameter to select the riff.
4. Press the **PLAY/PAUSE BUTTON** to start or stop the demo.
5. While the demo riff is playing, you may change presets and make any changes to amp models and effects.
6. Press the **HOME BUTTON** to exit.

*Available on select models. Please see the comparison chart to see which features are on each model of Spider V.

RELAY G10T Wireless Charging and Syncing*

1. Insert the **RELAY G10T** transmitter into the **INPUT JACK**. **SPIDER V** will find and select the best available channel and charge the transmitter.
2. After a few seconds a check mark will appear on screen to show the transmitter is ready to use. Remove **RELAY G10T** and plug it into your guitar.
3. The battery life is also indicated on the Home Screen when the **RELAY G10T** is detected. When showing 3 bars, the battery is full.
4. **SPIDER V** must be plugged in to power and turned on in order to charge the transmitter.

Editing

1. Press the **EDIT BUTTON**.
2. Turn the **ROTARY KNOB** to scroll thru the parameter list.
3. Press the **ROTARY KNOB** to select a parameter.
4. Turn the **ROTARY KNOB** to modify the parameter.
5. Press the **ROTARY KNOB** again to return to scrolling the list.
6. Press the **HOME BUTTON** to exit.

Global Settings and Wireless Channel Selection

1. Press and hold the **HOME BUTTON** to enter the Global Settings Screen.
2. Turn the **ROTARY KNOB** to scroll through the settings
3. Press the **ROTARY KNOB** to select a setting.
4. Turn the **ROTARY KNOB** to modify the setting.
5. Press the **ROTARY KNOB** again to return to scrolling the list.
6. Press the **HOME BUTTON** to exit.

Using FBV Foot Controller

1. Plug in a **Line 6 FBV** controller into the **FBV PEDAL** port on the back of **SPIDER V**.
2. Press **Bank UP/DOWN** and **A,B,C,D** to change presets
3. Press the second row of footswitches to control effect bypass. Please refer to the **Pilot's Guide** for your **FBV**, or the Line 6 website for additional details and functionality.
4. Press the **TREADLE** toe switch to engage the wah effect.
5. Press the **FUNCTION BUTTON** to trigger the looper record, overdub and playback.

*Available on select models. Please see the comparison chart to see which features are on each model of Spider V.

Please Note:

Line 6, Spider and Relay and trademarks of Line 6, Inc., registered in the U.S. and other countries. FBV is a trademark of Line 6, Inc. All rights reserved.

Mac and Lightning are trademarks of Apple Inc. registered in the U.S. and other countries. iOS is a trademark of Cisco, registered in the U.S. and other countries. Android is a trademark of Google, Inc.

SERIAL NO: _____