

Roland

ROLAND
ORGAN

MUSIC ATELIER

AT-900
Platinum Edition

AT-900

AT-800

AT-500

AT-300

AT-100

AT-75

AT-900C

ATELIER Combo
AT-350C

All About
Organ

Elegant, Expressive, Timeless — An Instrument for the Ages

Roland Organ — MUSIC ATELIER

From generation to generation, families around the world have filled their homes with the joyful sound of the organ. As the centerpiece of social gatherings and events, the organ has become more than just a musical instrument — it is an icon of expression, enjoyment, and entertainment. Embodying Roland's world-leading digital technology, the MUSIC ATELIER organ inherits the full, rich sound and elegant design of a traditional organ combined with the most expressive and advanced home-organ features. For all who love the organ, we proudly present the magic of MUSIC ATELIER.

MUSIC ATELIER Concept

•Organ Sound

From the sound of stately classical pipe and theater organs of the silent-movie era to up-tempo jazz and rock organs, MUSIC ATELIER provides organ sounds from around the world, letting you play any genre convincingly. You can even layer authentic Orchestral Voices with the organ sounds, creating sounds and textures that were never possible with conventional organs.

•Real-time performance

MUSIC ATELIER is a dream for real-time performance, with expressive features that enhance your ability to play, not impede it. Performers love the clear, easy-to-understand control panel based on traditional playing techniques, and a lower keyboard that expands the tonal palette. While playing, you can switch from one registration to the next and layer sounds freely.

•Compatibility

The series design concept is thoroughly unified, allowing music and registration data to be exchanged between models. Operation panel layouts are similar between models, making data exchange and control fast and easy.

Praise for MUSIC ATELIER



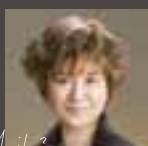
Hector Olivera

"I've always felt that MUSIC ATELIER captures the superior real-time expressiveness of the player's emotion. I often play orchestral music by myself with this MUSIC ATELIER since it's full of beautiful orchestral voices. I especially love the newly built-in 'Articulation Voice' (SuperNATURAL sound) of violin and cello, etc., because they allow me to play every delicate nuance of the original instruments."



Tony Fenelon

"The MUSIC ATELIER has always given me so much enjoyment and confidence in expressing my many musical tastes, whether they be symphonic, jazz, big band, theatre or classical pipe organ. The AT-900 has taken excellence to new heights, and it features superb new authentic theatre organ voices with rich tremulants to capture the magnificence of the 'king of instruments'. This new instrument takes on a whole new dimension with even more enhanced sound quality which will inspire you to the limits of your imagination."



Yuri Tachibana

"My fascination with the MUSIC ATELIER organ is its sound, which is the most important part of a musical instrument. Every tone is clear and realistic, and every time I play it I feel great. The wide variety of realistic rhythms always inspires me with fresh ideas, and I love to use the new Harmonic Bar, which enables performance with complete freedom. It's also a pleasure that data compatibility and consistent operation are thoroughly kept. The MUSIC ATELIER expands your musical experience without limit."





AT-900 Platinum Edition

Advanced technology meets organ

Organ Sound

A universe of organ sounds from a single instrument

In addition to the sound of some of the world's most admired organs, the new Atelier series organs are also equipped with a footage sound source. By combining sounds that differ in height from 1 to 16 feet, you can freely customize the tone, creating the perfect organ sound for each song and spatial environment. Sounds can be further polished with rich, sparkling tremulant and a variety of sampled sound sources. Rounding out the sound set are thick, gorgeous pipe organ voices derived from acclaimed RODGERS digital classic organs.



Harmonic Bar enables intuitive, expressive playing

The new physical Harmonic Bars provide authentic, hands-on control for expressive organ playing. Under the control of the

Bars is a Virtual Tone Wheel voice engine derived from Roland's acclaimed VK combo-organ series. Furthermore, an individual solo bar* is provided for the onboard Orchestral Voice, allowing organ sounds to be combined with Orchestral Voices for incredible textures.

*AT-900 Platinum Edition/900/900C/800/500/350C



Orchestral Voices

Diverse Orchestral Voices

In addition to classic Orchestral Voices such as strings, brass, and plucked instruments, new expressive tones have been added, including Mood Strings, Mellow Harmonica*¹, and Jazz Flute*². By selecting voices from the three parts — Organ, Symphonic and Orchestral — you can create layered textures for both the upper and lower keyboards. Also, special Active



tradition


Expression Voices are available so when you move the expression pedal, the sound becomes more animated and expressive.

*1 AT-900 Platinum Edition/900/900C/800
*2 AT-900 Platinum Edition/900/900C/800/500/350C

Acoustic-instrument expression with Articulation Voices

Using new technology called SuperNATURAL*, the most subtle and expressive characteristics of acoustic instruments such as breath and articulation anomalies are faithfully provided. This technology can be applied to the four Articulation Voices: Violin, Trombone, Cello, and Tenor Sax. In addition, you can control vibrato, pizzicato, portamento, and other expressive effects to get just the sound you want.

* AT-900 Platinum Edition/900/900C/800



SuperNATURAL is Roland's breakthrough sound-generating technology that enables a new level of realism and expression. SuperNATURAL reproduces the delicate, organic tonal changes and playing nuances of acoustic and electric musical instruments.

Playability

Easy-to-use control panel based on traditional organ-playing principles

With its simple panel layout, MUSIC ATELIER has been designed with priority given to the real-time needs of playing. Buttons are color coded according to function. Selection of sounds, voice layering, and balance changes — its design enables complete freedom of expression, with all settings quickly changeable in real time.

Lower keyboard for added expression

The lower keyboard offers much more than meets the eye. You can program it for solo voices, bass parts, or even divide it into four parts*¹ using the Split function: Solo, Lower, Bass, and Keyboard. With a wide range of 76 keys*², full-fledged piano playing is also possible. Piano performance is further accentuated with “Initial Touch”,



a feature that transforms the keyboard for delicate, expressive touch; damper pedaling is supported as well. In addition, the lower keyboard uses a waterfall keyboard that does not catch the fingers, and is well suited for glissando and other styles of playing.



*1 AT-900 Platinum Edition/900/900C/800/500/350C. AT-300/100 are a maximum of three parts. AT-75 is two parts. *2 AT-900/900C/800. AT-500/350C are 64 keys, AT-300/100 are 61 keys, AT-75 is 49 keys.

Pedalboard frees your hands, and creative potential

The built-in pedalboard*¹ can be used for hands-free bass playing, for harmonic playing found in pipe-organ music, and even for layering two different sounds*². Put your feet into the action, and your performance options will double.

*1 For AT-900C, optional pedalboard PK-25A or PK-9 required.
*2 AT-900 Platinum Edition/900/900C/800 can layer up to three sounds. The AT-500 and AT-350C are up to two sounds.

Design

The beauty of the organ

Elegant and stately — the newly redesigned walnut cabinet and polished gray panel color remain true to the beauty of the organ. The AT-900C and AT-350C feature excellent portability with a modern style that looks good both on stage and in your living room.

Compatibility

Consistent design concept and data compatibility for all models

A high degree of data compatibility ensures that valuable music resources, including your own music and registration data, can be exchanged between different models. You can even transfer data between new Atelier organs and previous models such as the AT-90SL and AT-80SL.



Freedom to play what you imagine. Roland expands the potential of organ playing.



Advances

Large color LCD monitor with easy-to-operate touch panel*

To make operations even easier, all models feature a large color touch-panel LCD with a quick-start guide built in. The newly expanded screen enables often-used menu icons to be always shown on the monitor, which further simplifies navigation and operation.

*AT-900 Platinum Edition/900/900C/800/500

• DigiScore display

Commercially available SMF music data and pre-recorded performance data are displayed onscreen in musical notation. Through the use of digital technology, the score screen can be zoomed. The part for a single hand can be displayed, and lyrics can be shown as well. It's also easy to mute particular parts so you can enjoy "minus one" playing.

• Sound settings

The selected sound name is shown onscreen. Setting the sound for the upper keyboard, lower keyboard, and pedalboard is quick and easy.



▲ AT-900 Platinum Edition

Registration: optimal panel settings can be instantly recalled

For ease of use during performance, your favorite voice and rhythm selections, as well as other panel settings, can be instantly recalled from internal memory or USB memory key. You can produce magnificent ensemble performances, instantly switching between combinations of sounds.



• Quick registration* from the hands of world-class organists

From keyword categories you can select registrations compiled by Hector Olivera and other internationally acclaimed



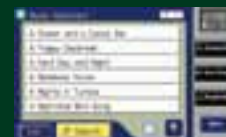
▲ AT-900/900C

organists. Play with the know-how of professional players.

*AT-900 Platinum Edition/900/900C/800/500

• Convenient Music Assistant* functions

Whenever you want to play "Blue Moon," "Georgia," "Summertime," or other favorites, simply select the style image and conditions of the song you wish to play, and the optimal rhythm and voice settings can be easily retrieved.



*AT-900/900C/800/500

Expression

Achieve the rich, resonant ambience of a cathedral with exclusive Roland RSS technology

Equipped with Roland's exclusive RSS (Roland Sound Space) technology, all MUSIC ATELIER models provide luxurious reverb sound. From the room size to the wall material, various reverberation parameters can be set. AT-900 Platinum Edition/900/800/350C have a special output jack that, when connected to external speakers or a home audio system, fills the space with lush, cathedral-like ambience.

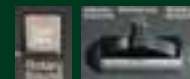
Harmony Intelligence for a beautiful ensemble sound

With Harmony Intelligence, a beautiful harmony complements the melody played on the upper keyboard. The wide-ranging variety of styles includes big band, combo, and country. Enjoy full ensemble playing across a world of musical genres.

Complete set of effects to enrich your playing

In addition to a complete set of effects that includes rotary, chorus*, sustain, and reverb, all models provide a footswitch for controlling realistic glide effects, and even a lever* that enables expressive pitch bending and vibrato.

*AT-900 Platinum Edition/900/900C/800/500





Excitement

Greater freedom of expression just by moving your hand: D-BEAM*

The D-BEAM controller lets you wave your hand over the invisible infrared beam to alter the sound. Filter and pitch bending effects allow mute trumpet and tenor sax voices to be played with greater realism. Single-shot sounds, such as cymbals and wind chimes, can also be played dramatically from the D-BEAM.

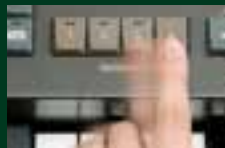


The beam in the photo has been colored to show the path of the D-BEAM; the actual beam is invisible.

*AT-900 Platinum Edition/900/900C/800/500/350C

With auto accompaniment, you can play along with musicians from around the world.

Swing, country, bossa nova — with MUSIC ATELIER you can play along with rhythms from all over the world. The built-in patterns feature the ultra-realistic groove and feel of professional drummers. By playing simple chords on the lower keyboard, the arranger function (Auto Accompaniment) automatically adds accompaniment, letting you play with a virtual backing band of world-class musicians. A host of convenient functions are available, such as automatic fills that add color to your playing, one-touch program functions that call up optimal panel settings, and four Variation Buttons for smooth song transitions and a wider variety of accompaniment patterns within a single Style.



Composer function for visual lyric and note display

The Composer function on AT-900 Platinum Edition/900/900C/800/500 provides a friendly graphical environment for song creation and performance. It can display the parts you record as well as your song lyrics, and it allows you to switch between the mute screen and lyrics display screen with a single touch.



Enjoyment

Convenient USB compatibility for your musical data

To save and retrieve your precious data, simply plug in a USB memory key — a global external-storage standard*. Data exchange with previous models such as the AT-90SL and AT-80SL is also fully supported.

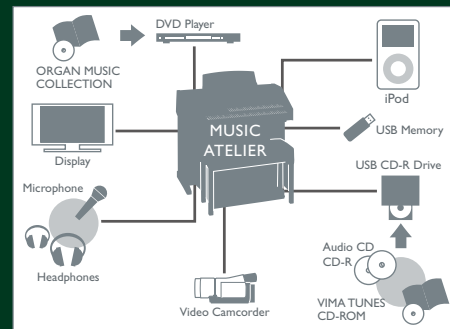


*Roland M-UF Series (sold separately) recommended for perfect aesthetic and functional compatibility.

Connect external devices for creative expansion

Expand your musical universe by incorporating musical content from around the world. If you connect a portable audio player or USB CD drive, for example, you can play along with audio CDs or music stored in other formats.

Furthermore, if you connect an iPod® or MP3 player to the Roland Audio-Visual Port*¹, you can employ the Center Cancel function to minimize vocals, or use the



Pitch Change function to transpose the key of your pre-recorded music to your favorite keys. By connecting external speakers (such as Roland CM-220), you can create a beautifully resonant sound field that allows you to enjoy the sensation of being enveloped by the sound of pipes in your own home*².



Illustration of satellite speakers in use.

*¹ AT-900 Platinum Edition/900/900C

*² AT-900 Platinum Edition



AT-900

AT-900A (Golden Oak finish) and AT-900W (Satin White finish) are also available. For details, please contact the dealer/distributor in your country.

AT-900 Platinum Edition

The Pinnacle of the MUSIC ATELIER Series

The new flagship of the Music Atelier series has arrived! The AT-900 "Platinum Edition" with its newly-designed cabinet, expanded voices and features, improved user interface, and new arranger engine position the AT-900 Platinum Edition as the pinnacle of the Music Atelier product line. Step into the big league of luxury with the AT-900 Platinum Edition.

[Main Features]

- Hand-crafted wooden cabinet with contoured shape, rounded toe block, and wider music stand
- 56-key upper keyboard with aftertouch
- 76-key lower keyboard (waterfall)
- 25-key pedalboard
- 4 tweeters, 6 full-range speakers, 1 woofer; total 240 W rated power output
- Large LCD color touch-screen with user-friendly interface
- 539 organ and instrument voices including 40 SuperNATURAL Voices
- Virtual Tone Wheel organ voices and expanded pipe organ voices
- Improved arranger engine with 439 Rhythm patterns
- Enhanced Music Assistant function with 3,600 settings
- 350-song hymn library onboard
- BMP file export for organ arrangement score





Shown with optional
BNC-27-WN organ bench.

AT-800

Experience the supreme organ playing experience

Luxurious cabinet, finished in natural wood . . . control panel, softly lit . . . not only is the form elegantly superb, the advanced sound source is as impressive as it is expressive. From the multidimensional RSS reverb output, which can give your room the ambience of a cathedral, to the luxurious large color LCD touch-panel — the AT-800 MUSIC ATELIER organ provides a supreme organ playing experience.

[Main Features]

- Warm, luxurious console lighting
- 56-key upper keyboard with aftertouch
- 76-key lowerkeyboard (waterfall)
- 20-key pedalboard
- 6 full-range speakers, 1 woofer; total 240W rated power output
- Large LCD color touch-screen with user-friendly interface
- 450 organ and instrument voices, 287 rhythm patterns
- Dedicated harmonic bar for orchestral tones
- 2,296 presets with One-Touch Programs
- Enhanced Music Assistant function with 2,100 settings
- 25 Harmony Intelligence settings
- 248 Quick Registrations
- 7-track recorder
- USB memory key(optional) for external storage



Virtual Tone Wheel





Shown with optional
BNC-27-DB organ bench.

AT-500

Superior Quality and Features for Ultimate Expression

Housed in a gorgeous, dark walnut cabinet, the AT-500 exudes quality and class. Its harmonic bars provide instant access to a wide variety of superior organ sounds, while the full-range speaker system provides a warm, rich sound that fills any room. For a breathtaking ensemble sound, the Solo Harmonic Bar lets you layer organ sounds with built-in orchestral instruments. An invisible D-BEAM is included for creating dramatic effects. Despite its wealth of features, the AT-500 is easy to navigate thanks to its large color LCD touch panel.

[Main Features]

- 49-key upper keyboard
- 64-key lower keyboard (waterfall)
- 20-key pedalboard
- 2 full-range speakers, 2 tweeters; total 100W rated power output
- Large LCD color touch-screen with user-friendly interface
- 250 organ and instrument voices
- 195 rhythm patterns x 4 variations
- Dedicated harmonic bar for orchestral tones
- D-BEAM
- 1,560 presets with One-Touch Programs
- Enhanced Music Assistant function with 1,200 settings
- 18 Harmony Intelligence settings
- 150 Quick Registrations
- 7-track recorder
- USB memory key (optional) for external storage



Shown with optional
BNC-15-DR organ bench.

AT-300

Serious Performance in a Compact Cabinet

With its space-saving design, classic roll-top cover, waterfall keys, and harmonic bars for authentic tone control, the AT-300 is the perfect choice for organ enthusiasts who want pro features with a smaller footprint. Equipped with 180 types of built-in musical instruments, plus 160 rhythms (each with four variations), the AT-300 puts a world of music at your fingertips. The built-in speaker box delivers a powerful, resonant sound that defies its size, while the backlit graphical LCD provides clear, concise control.

[Main Features]

- 49-key upper keyboard
- 61-key lower keyboard (waterfall)
- 20-key pedalboard
- Total 60W rated power output
- Backlit graphical LCD with user-friendly interface
- Harmonic Bar
- 180 organ and instrument voices, 160 rhythm patterns x 4 variations
- 640 presets with One-Touch Programs
- 12 Harmony Intelligence settings
- 7-track recorder
- USB memory key (optional) for external storage

Virtual Tone Wheel





Shown with optional
BNC-15-DR organ bench.

AT-100 Entry Model With Great Performance and Friendly Features

The AT-100 is modern, stylish, and compact, beautifully accenting its surroundings without occupying much space. With 120 types of built-in musical instruments, 110 rhythms (each with four variations), plus harmonic bars for authentic tone control, the AT-100 provides a surprisingly wide lineup of sound and rhythm for its price and size class.

[Main Features]

- 49-key upper keyboard
- 61-key lower keyboard (waterfall)
- 20-key pedalboard
- Total 40W rated power output
- Backlit graphical LCD with user-friendly interface
- Harmonic Bar
- 120 organ and instrument voices, 110 rhythm patterns x 4 variations
- Over 400 presets with One-Touch Programs
- 9 Harmony Intelligence settings
- 7-track recorder
- USB memory key (optional) for external storage



Shown with optional
BNC-15-DR organ bench.

AT-75

The Most Affordable MUSIC ATELIER —Perfect for First-Timers

At a price that's friendly for all budgets, and a size that will comfortably fit into any room, the AT-75 welcomes everyone to experience the joy of traditional organ playing. This small yet impressive instrument is equipped with the same harmonic bars and lower waterfall keyboard as the upper-line models. It's fun, inviting, and great sounding.

[Main Features]

- 49-key upper keyboard
- 49-key lower keyboard (waterfall)
- 13-key pedalboard
- Total 30W rated power output
- Backlit graphical LCD with user-friendly interface
- Harmonic Bar
- 60 organ and instrument voices, 60 rhythm patterns x 4 variations
- Over 100 presets with One-Touch Programs
- 6 Harmony Intelligence settings
- 7-track recorder
- USB memory key (optional) for external storage



Shown with optional PK-25A Pedalboard and BNC-23 organ bench.



Shown with optional PK-9 Pedalboard and BNC-23 organ bench.

*Choice of pedalboards (sold separately): 25 key wooden pedalboard (PK-25A) and 20 key pedalboard (PK-9).

AT-900C

On stage or in home, enjoy top quality in a modern and portable form

It's gorgeous and stately, yet the AT-900C is portable enough to be taken on the road. The contemporary, streamlined cabinet design combines a natural wood finish with eye-catching silver accents. Specially equipped XLR outputs facilitate professional setups for concert performances.

[Main Features]

- Warm, luxurious console lighting
- 56-key upper keyboard with aftertouch
- 76-key lower keyboard (waterfall)
- Optional pedalboards available
- 4 full-range speakers, 2 tweeters; total 160W rated power output
- Large LCD color touch-screen with user-friendly interface
- 450 organ and instrument voices, 337 rhythm patterns
- Dedicated harmonic bar for orchestral tones
- 2,696 onboard presets with One-Touch Programs
- Enhanced Music Assistant function with 2,800 settings
- 36 Harmony Intelligence settings
- 248 Quick Registrations
- 7-track recorder
- USB memory (optional) key for external storage



Virtual Tone Wheel



GENERAL MIDI 2



XGIITE



TUNES



Shown with optional PK-9 Pedalboard, KS-G8 Keyboard Stand, and BNC-15-BK Organ Bench.



Shown with optional KS-G8 Keyboard Stand, EV-7 Expression Pedal, and DP-10 Damper Pedal.

Shown with optional PK-25A Pedalboard, KS-G8 Keyboard Stand, and BNC-23-BK Organ Bench.

A TELIER Combo AT-350C

The Stylish, Travel-Friendly Combo Organ

The ATELIER Combo AT-350C houses a “greatest hits” lineup of features, sounds, and expressive controllers in a travel-friendly instrument made for the stage. Virtual Tone Wheel technology with Harmonic bars and optional pedalboards provide a traditional organ experience, while the SuperNATURAL sounds and D-BEAM controller takes you into the future. This boundary-breaking instrument sets a new standard in live-performance versatility and borderless musical expression for all ages and musical preferences.

[Main Features]

- 49-key upper keyboard,
- 64-key lower keyboard (waterfall)
- Optional pedalboards available
- Lightweight design, easy to transport
- 251 organ and instrument voices, 220 rhythm patterns
- Dedicated harmonic bar for orchestral tones
- 880 presets with One-Touch Programs
- Enhanced Music Assistant function with 960 settings
- 18 Harmony Intelligence settings
- 7-track recorder
- Audio Recording
- USB memory key (optional) for external storage



SPECIFICATIONS

AT-900 Platinum Edition

AT-900

AT-800

Keyboards/ Pedals	Keyboards	Upper	56 keys (C3-G7)		
		Lower	76 keys (Waterfall keyboard, E1-G7)		
		Pedalboard	25 keys (C2-C4)	20 keys (C2-G3)	
	Touch	Initial Touch	Upper, Lower (10 levels for each)		
		After Touch	Upper (10 levels)		
		Pedals	Damper pedal, Expression pedal		
	Footswitch	2 pcs. (on the expression pedal, function assignable)			
Sound Generator	Sound Generator	Original MUSIC ATELIER (Including SuperNATURAL Voices), Virtual Tone Wheel, GM2/GS/XG lite			
	Voice	539 Voices (Including 40 SuperNATURAL Voices and 31 Active Expression Voices)	450 Voices (Including 4 SuperNATURAL Voices and 31 Active Expression Voices)		
	Vintage Organ	Flute (2 types, with harmonic bars), Pipe, Theater	Flute (with harmonic bars), Pipe, Theater		
	Drums/SFX Sets	19 Drum Sets + 1 SFX Set	18 Drum Sets + 1 SFX Set		
	Manual Percussion Sets	14 sets			
	Part	Upper Part	Organ, Symphonic, Orchestral		
		Lower Part	Organ, Symphonic, Orchestral		
		Solo Part	Solo		
		Pedal Part	Organ, Orchestral		
	Effects	RSS Reverb, Chorus, Sustain, Vibrato, Pitch Bend, Glide, Master EQ Organ voices: Rotary Sound, Overdrive, Vibrato/Chorus	RSS Reverb, Chorus, Sustain, Vibrato, Pitch Bend, Glide Organ voices: Rotary Sound, Vibrato/Chorus		
	Harmony Intelligence	36 types		25 types	
	Master Tuning	415.3 Hz – 466.2 Hz (adjustable in Increments of 0.1 Hz)			
	Key Transpose	-4 – +7 (in semitones)			
Playback Transpose	-6 – +5 (in semitones)				
Registration Memories	Registration	Max. 99 registration sets for each folder			
	Number of Buttons	12 Buttons			
	Function	Load Next, Manual Button Assign, File Edit	Load Next, File Edit		
Rhythm	Rhythm	439 rhythms in 10 groups x 4 variations	337 rhythms in 10 groups x 4 variations	287 rhythms in 10 groups x 4 variations	
	User Rhythm	99 rhythms			
	Rhythm Customize	Pattern editing of the internal rhythms (Drum Set, Beat, Tempo, Note)			
	Arranger Function	Tempo, Arranger On/Off, Start/Stop, Sync Start, Intro, Ending, Intro Count Down, Break, Auto Fill In, Variation (4 variations), One Touch Program, Chord Intelligence, Chord Hold, Leading Bass, Auto Standard Tempo, Accom Part Balance	Tempo, Arranger On/Off, Start/Stop, Sync Start, Intro, Ending, Intro Count Down, Break, Auto Fill In, Variation (4 variations), One Touch Program, Chord Intelligence, Chord Hold, Leading Bass, Auto Standard Tempo, Rhythm Mode		
	Music Assistant	900 titles x 4 variations	700 titles x 4 variations	525 titles x 4 variations	
	One Touch Program	439 rhythms x 2 groups x 4 variations	337 rhythms x 2 groups x 4 variations	287 rhythms x 2 groups x 4 variations	
	Quick Registration	264 settings in 13 groups	248 settings in 12 groups		
Composer	Tracks	7 tracks			
	Note Storage	Approx. 40,000 notes			
	Song Length	Max. 999 measures			
	Tempo	Quarter note = 20 to 500			
	Resolution	120 ticks per quarter note			
	Controls	Song Select, Play/Stop, Rec, Rewinding, Fast-Forwarding, Tempo			
	Recording	Realtime (Replace, Punch In/Out, Loop)			
	Audio Recording	WAV (44.1 kHz, 16-bit Linear Format), CD Writing			
	Edit Function	Delete Measure, Delete Track, Erase, Copy, Quantize			
	Score Display	DigiScore (Great Staff, G Clef Staff, F Clef Staff, with note name, with Lyrics)			
File Storage	Media	USB flash memory			
	Song Save Format	MUSIC ATELIER original format, SMF format 0, WAV format			
	Songs	Max. 99 songs for each folder			
Output	Rated Power Output	10 W + 10 W + 60 W + 60 W + 100 W			
	Speaker	Tweeter	5 cm x 4	————	
		Full-range	8 cm x 2 (small), 16 cm x 4 (large)		
		Woofer	30 cm x 1		
Display	Graphic 800 x 480 dots backlit color LCD with touch screen				
Controllers	Upper Harmonic Bar	16", 5-1/3", 8", 4", 2-2/3", 2", 1-3/5", 1-1/3", 1"			
	Lower Harmonic Bar	16", 5-1/3", 8", 4", 2-2/3", 2", 1-3/5", 1-1/3", 1"			
	Pedal Harmonic Bar	16", 8"			
	Solo Harmonic Bar	Yes			
	Percussion	4", 2-2/3", Fast Decay			
	Pitch Bend/Modulation lever	Yes			
Connectors	D-BEAM	Yes (function assignable)	Yes		
		Main Output jacks (L/Mono, R), Aux/Drums Output jacks (L/Mono, R), Bass Output jack (mono), Input jacks (L/Mono, R), Video In jack (Camera): RCA phono type, DVD Player In jacks (Video, L, R): RCA phono type, Ext In jacks (Video, L, R): RCA phono type, Video Output jacks (Analog RGB, Video): HD DB-15 type, RCA phono type, Phones jack x 2: Stereo 1/4-inch phone type, Mic jack: 1/4-inch phone type, MIDI connectors (In, Out), USB COMPUTER port, USB MEMORY port, Ext Drive connector, AC Inlet	Main Output jacks (L/Mono, R), Aux/Drums Output jacks (L/Mono, R), Bass Output jack (mono), Input jacks (L/Mono, R), Video In jack (Camera): RCA phono type, DVD Player In jacks (Video, L, R): RCA phono type, Ext In jacks (Video, L, R): RCA phono type, Video Output jacks (Analog RGB, Video): HD DB-15 type, RCA phono type, Phones jack x 2: Stereo 1/4-inch phone type, Mic jack: 1/4-inch phone type, MIDI connectors (In, Out), USB COMPUTER port, USB MEMORY port, Ext Drive connector, AC Inlet	Main Output jacks (L/Mono, R), Aux/Drums Output jacks (L/Mono, R), Bass Output jack (mono), Input jacks (L/Mono, R), Video In jack (Camera): RCA phono type, DVD Player In jacks (Video, L, R): RCA phono type, Ext In jacks (Video, L, R): RCA phono type, Video Output jacks (Analog RGB, Video): HD DB-15 type, RCA phono type, Phones jack x 2: Stereo 1/4-inch phone type, Mic jack: 1/4-inch phone type, MIDI connectors (In, Out), USB COMPUTER port, USB MEMORY port, Ext Drive connector, AC Inlet	
Other features	DigiScore BMP Export, Hymn Player (350 Songs Include), MIDI Visual Control, Lid, Illumination	V-LINK, Lid, Illumination			
Power Consumption	420 W				
Finish	Satin walnut		AT-900 : Satin Walnut / AT-900A : Golden Oak / AT-900W : Satin White	Satin Walnut	
Dimensions	Console (included Music Rest)	1,374(W) x 700(D) x 1,350 (H) mm; 54-1/8 (W) x 27-9/16 (D) x 53-3/16 (H) inches	1,374(W) x 700(D) x 1,350 (H) mm 54-1/8 (W) x 27-9/16 (D) x 53-3/16 (H) inches	1,350 (W) x 694 (D) x 610 (H) mm 53-3/16 (W) x 27-3/8 (D) x 24-1/16 (H) inches	
	Stand	————			
	Pedalboard	1,160 (W) x 844 (D) x 128 (H) mm; 45-11/16 (W) x 33-1/4 (D) x 5-1/16 (H) inches			
	Total	1,374 (W) x 1,020 (D) x 1,350 (H) mm; 54-1/8 (W) x 40-3/16 (D) x 53-3/16 (H) inches	1,374 (W) x 1,020 (D) x 1,350 (H) mm 54-1/8 (W) x 40-3/16 (D) x 53-3/16 (H) inches	1,350 (W) x 694 (D) x 1,328 (H) mm 53-3/16 (W) x 27-3/8 (D) x 52-5/16 (H) inches	
Bench	1,075 (W) x 379 (D) x 622 (H) mm; 42-3/8 (W) x 14-15/16 (D) x 24-1/2 (H) inches				
Weight	Console	180 kg; 397 lbs	180.5 kg; 398 lbs	78 kg; 172 lbs	
	Stand	————			
	Pedalboard	24 kg; 52 lbs			
	Total	204 kg; 449 lbs	204.5 kg; 451 lbs	146 kg; 322 lbs	
	Bench	21 kg; 46 lbs			
Accessories	Music Rest, 2 x Screws for the Music Rest, Power Cord, Pedalboard, Bench, Remote Control, 2 x Alkaline battery (AA, LR6), Owner's Manual, Supplementary Manual, Voice&Rhythm Guide, Leaflet (Rhythm List)	Music Rest, 2 x Screws for the Music Rest, Power Cord, Pedalboard, Bench, Remote Control, 2 x Alkaline battery (AA, LR6), Owner's Manual, Voice&Rhythm Guide, Leaflet (Rhythm List)			
Options (sold separately)	Stereo Headphones, USB Flash Memory*, USB CD Drive, Microphone			BNC-27-WN	

AT-500

AT-300

AT-100

AT-75

49 keys (C3–C7)			
64 keys (Waterfall keyboard, A1–C7)	61 keys (Waterfall keyboard, C2–C7)		49 keys (Waterfall keyboard, C2–C6)
20 keys (C2–G3)		13 keys (C2–C3)	
Upper, Lower (10 levels for each)			
Damper pedal, Expression pedal		Expression Pedal	
2 pcs. (on the expression pedal, function assignable)			
Original MUSIC ATELIER, Virtual Tone Wheel, GM2/GS/XG lite			
250 Voices (Including 12 Active Expression Voices)	180 Voices (Including 8 Active Expression Voices)	120 Voices (Including 5 Active Expression Voices)	60 Voices (Including 2 Active Expression Voices)
Flute (with harmonic bars)			
16 Drum Sets + 1 SFX Set	12 Drum Sets + 1 SFX Set	8 Drum Sets + 1 SFX Set	6 Drum Sets + 1 SFX Set
6 sets		Upper	
Organ, Orchestral		Lower	
Organ, Orchestral		Solo	
Pedal			
RSS Reverb, Chorus, Sustain, Vibrato, Pitch Bend, Glide Organ voices: Rotary Sound, Vibrato/Chorus	RSS Reverb, Sustain, Glide Organ voices: Rotary Sound		
18 types	12 types	9 types	6 types
415.3 Hz – 466.2 Hz (adjustable in increments of 0.1 Hz)			
-4 – +7 (in semitones)			
-6 – +5 (in semitones)			
Max. 99 registration sets for each folder		4 memories	
8 Buttons		4 Buttons	
Load Next, File Edit	Load Next, Manual Button Assign		
195 rhythms in 10 groups x 4 variations	160 rhythms in 8 groups x 4 variations	110 rhythms in 8 groups x 4 variations	60 rhythms in 8 groups x 4 variations
99 rhythms			
Pattern editing of the internal rhythms (Drum Set, Beat, Tempo, Note)	Tempo, Arranger On/Off, Start/Stop, Sync Start, Intro/Ending, Intro Count Down, Break, Auto Fill In, Variation (4 variations), One Touch Program, Chord Intelligence, Leading Bass, Auto Standard Tempo, Accomp Part Balance		
Tempo, Arranger On/Off, Start/Stop, Sync Start, Intro, Ending, Intro Count Down, Break, Auto Fill In, Variation (4 variations), One Touch Program, Chord Intelligence, Chord Hold, Leading Bass, Auto Standard Tempo, Rhythm Mode			
300 titles x 4 variations	Over 170 titles x 4 variations	Over 100 titles x 4 variations	Over 28 titles x 4 variations
195 rhythms x 2 groups x 4 variations	160 rhythms x 4 variations	110 rhythms x 4 variations	60 rhythms x 4 variations
150 settings in 12 groups			
7 tracks			
Approx. 40,000 notes			
Max. 999 measures			
Quarter note = 20 to 500			
120 ticks per quarter note			
Song Select, Play/Stop, Rec, Rewinding, Fast-Forwarding, Tempo			
Realtime (Replace, Punch In/Out, Loop)	Realtime (Replace)		
Delete Measure, Delete Track, Erase, Copy, Quantize			
DigScore (Great Staff, G Clef Staff, F Clef Staff, with note name, with Lyrics)			
USB flash memory			
MUSIC ATELIER original format, SMF format 0			
Max. 99 songs for each folder			
50 W + 50 W	30 W + 30 W	20 W + 20 W	15 W + 15 W
5 cm x 2			16 cm x 2
25 cm x 2	20 cm x 2 (with speaker box)		
Graphic 800 x 480 dots backlit color LCD with touch screen			
Graphic 128 x 64 dots backlit LCD			
16', 5-1/3', 8', 4', 2-2/3', 2', 1-3/5', 1-1/3', 1'	16', 5-1/3', 8', 4', 2-2/3', 2', 1-3/5', 1-1/3', 1'		
16', 8'			
Yes			
4', 2-2/3', Fast Decay	2-2/3', Fast Decay		
Yes			
Yes			
Main Output jacks (L/Mono, R), Input jacks (L/Mono, R), Video Output jacks (Analog RGB): HD DB-15 type, Phones jack x 2: Stereo 1/4-inch phone type, Mic jack: 1/4-inch phone type, MIDI connectors (In, Out), USB COMPUTER port, USB MEMORY port, Ext Drive connector, AC Inlet	Main Output jacks (L/Mono, R), Input jacks (L/Mono, R), Phones jack x 2: Stereo 1/4-inch phone type, MIDI connectors (In, Out), USB COMPUTER port, USB MEMORY port, AC Inlet		
V-LINK, Lid		V-LINK	
120 W	80 W	70 W	60 W
Simulated Dark Walnut			
1,242 (W) x 653 (D) x 550 (H) mm; 48-15/16 (W) x 25-3/4 (D) x 21-11/16 (H) inches	1,233(W) x 551(D) x 466 (H) mm; 48-9/16 (W) x 21-3/4 (D) x 18-3/8 (H) inches	1,210(W) x 534(D) x 390 (H) mm; 47-11/16 (W) x 21-1/16 (D) x 15-3/8 (H) inches	
1,235 (W) x 599 (D) x 755 (H) mm; 48-5/8 (W) x 23-5/8 (D) x 29-3/4 (H) inches	1,229 (W) x 515 (D) x 748 (H) mm; 48-7/16 (W) x 20-5/16 (D) x 29-1/2 (H) inches	1,229 (W) x 515 (D) x 748 (H) mm; 48-7/16 (W) x 20-5/16 (D) x 29-1/2 (H) inches	
1,242 (W) x 653 (D) x 1,264 (H) mm; 48-15/16 (W) x 25-3/4 (D) x 49-13/16 (H) inches	1,233 (W) x 553 (D) x 1,172 (H) mm; 48-9/16 (W) x 21-13/16 (D) x 46-3/16 (H) inches	1,229 (W) x 542 (D) x 1,096 (H) mm; 48-7/16 (W) x 21-3/8 (D) x 43-3/16 (H) inches	
58.5 kg; 129 lbs	43.5 kg; 96 lbs	31.5 kg; 70 lbs	32.5 kg; 72 lbs
49.5 kg; 110 lbs	37 kg; 82 lbs	22.5 kg; 50 lbs	21.5 kg; 48 lbs
108 kg; 239 lbs	80.5 kg; 178 lbs	54 kg; 120 lbs	
Music Rest, 2 x Screw for the Music Rest, 2 x Knob Bolt, Cord Hook, Panel Sheet, Power Cord, Owner's Manual, Voice & Rhythm Guide	Music Rest, Power Cord, 2 x Knob Bolt, Cord Hook, Owner's Manual, Voice & Rhythm Guide, Quick Guide	Music Rest, Power Cord, 2 x Knob Bolt, Console Cover, Cord Hook, Owner's Manual, Voice & Rhythm Guide, Quick Guide	
Stereo Headphones, USB Flash Memory*, USB CD Drive, Microphone	Stereo Headphones, USB Flash Memory*, USB CD Drive		
BNC-27-DB	BNC-15-DR		

* Use USB Flash Memory sold by Roland. We cannot guarantee operation if other products are used. All specifications are subject to change.

SPECIFICATIONS

AT-900C

ATELIER Combo AT-350C

OPTIONS

Keyboards/ Pedals	Keyboards	Upper	56 keys (C3–G7)	49 keys (C3–C7)	
		Lower	76 keys (Waterfall keyboard, E1–G7)	64 keys (Waterfall keyboard, A1–C7)	
		Pedalboard	Option [PK-25A: 25 keys (C2–C4), PK-9: 20 keys (C2–G3)]		
	Touch	Initial Touch	Upper, Lower (10 levels for each)		
		After Touch	Upper (10 levels)		
	Pedals, Footswitch		Damper Pedal, Expression Pedal, 2 x Footswitches (attached to the optional pedalboard PK-25A, PK-9)	Damper Pedal, Expression Pedal, Footswitch (optional) Damper Pedal, Expression Pedal, 2 x Footswitches (attached to the optional pedalboard PK-25A, PK-9)	
Sound Generator	Sound Generator		Original MUSIC ATELIER (Including SuperNATURAL Voices), Virtual Tone Wheel, GM2/GS/XG lite		
	Voice		450 Voices (Including 4 SuperNATURAL Voices and 31 Active Expression Voices)	251 Voices (Including 15 SuperNATURAL Voices and 8 Active Expression Voices)	
	Vintage Organ		Flute (with harmonic bars), Pipe, Theater	Flute (2 types, with harmonic bars)	
	Drums/SFX Sets		18 Drum Sets + 1 SFX Set	17 Drum Sets + 1 SFX Set	
	Manual Percussion Sets		14 sets	7 sets	
	Part	Upper Part		Organ, Symphonic, Orchestral	Organ, Orchestral
		Lower Part		Organ, Symphonic, Orchestral	Lower
		Solo Part		Solo	Solo
		Pedal Part		Organ, Orchestral	Pedal
	Effects		RSS Reverb, Chorus, Sustain, Vibrato, Pitch Bend, Glide Organ voices: Rotary Sound, Vibrato/Chorus	RSS Reverb, Sustain, Vibrato, Pitch Bend, Glide Organ voices: Rotary Sound, Overdrive, Vibrato/Chorus	
	Harmony Intelligence		36 types	18 types	
	Master Tuning		415.3 Hz to 466.2 Hz (adjustable in increments of 0.1 Hz)		
	Key Transpose		-4 to +7 (in semitones)		
Playback Transpose		-6 to +5 (in semitones)			
Registration Memories	Registration		Max. 99 registration sets for each folder		
	Number of Buttons		12 Buttons	8 Buttons	
	Function		Load Next, File Edit	Load Next, Manual Button Assign	
Rhythm	Rhythm		337 rhythms in 10 groups x 4 variations	220 rhythms in 8 groups x 4 variations	
	User Rhythm		99 rhythms		
	Rhythm Customize		Pattern editing of the internal rhythms (Drum Set, Beat, Tempo, Note)		
	Arranger Function		Tempo, Arranger On/Off, Start/Stop, Sync Start, Intro, Ending, Intro Count Down, Break, Auto Fill In, Variation (4 variations), One Touch Program, Chord Intelligence, Chord Hold, Leading Bass, Auto Standard Tempo, Rhythm Mode	Tempo, Arranger On/Off, Start/Stop, Sync Start, Intro, Ending, Intro Count Down, Break, Auto Fill In, Variation (4 variations), One Touch Program, Chord Intelligence, Leading Bass, Auto Standard Tempo, Accomp Part Balance	
	Music Assistant		700 titles x 4 variations	Over 240 titles x 4 variations	
	One Touch Program		337 rhythms x 2 groups x 4 variations	220 rhythms x 4 variations	
	Quick Registration		248 settings in 12 groups	————	
Composer	Tracks		7 tracks		
	Note Storage		Approx. 40,000 notes		
	Song Length		Max. 999 measures		
	Tempo		Quarter note = 20 to 500		
	Resolution		120 ticks per quarter note		
	Controls		Song Select, Play/Stop, Rec, Rewinding, Fast-forwarding, Tempo		
	Recording		Realtime (Replace, Punch In/Out, Loop)	Realtime (Replace)	
	Audio Recording		WAV (44.1 kHz, 16-bit Linear Format), CD Writing	WAV (44.1 kHz, 16-bit Linear Format)	
	Edit Function		Delete Measure, Delete Track, Erase, Copy, Quantize	————	
	Score Display		DigScore (Great Staff, G Clef Staff, F Clef Staff, with note name, with Lyrics)	————	
File Storage	Media		USB Memory		
	Song Save Format		MUSIC ATELIER original format, SMF format 0, WAV format		
	Songs		Max. 99 songs for each folder		
Output	Rated Power Output		80 W + 80 W	————	
	Speaker	Tweeter	5 cm x 2	————	
		Full-range (small)	8 cm x 2	————	
		Full-range (large)	20 cm x 1	————	
Display		Graphic 800 x 480 dots backlit color LCD with touch screen	Graphic 128 x 64 dots backlit LCD		
Controllers			Upper Harmonic Bar: 16', 5-1/3', 8', 4', 2-2/3', 2', 1-3/5', 1-1/3', 1' Lower Harmonic Bar: 16', 5-1/3', 8', 4', 2-2/3', 2', 1-3/5', 1-1/3', 1' Pedal Harmonic Bar: 16', 8' Solo Harmonic Bar, Percussion: 4', 2-2/3', Fast Decay Pitch Bend/Modulation lever, D-BEAM	Upper Harmonic Bar: 16', 5-1/3', 8', 4', 2-2/3', 2', 1-3/5', 1-1/3', 1' Lower Harmonic Bar: 16', 5-1/3', 8', 4', 2-2/3', 2', 1-3/5', 1-1/3', 1' Pedal Harmonic Bar: 16', 8' Solo Harmonic Bar, Percussion: 4', 2-2/3', Fast Decay D-BEAM (function assignable)	
Connectors			Main Output jacks (L/Mono, R), Balanced Output (L, R), Aux/Drums Output jacks (L/Mono, R), Bass Output jack (mono), Input jacks (L/Mono, R), Video In jack (Camera): RCA phono type, DVD Player In jacks (Video, L, R): RCA phono type, Ext In jacks (Video, L, R): RCA phono type, Video Output jacks (Analog RGB, Video): HD DB-15 type, RCA phono type, Phones jack x 2: Stereo 1/4-inch phono type, Mic jack: 1/4-inch phono type, MIDI connectors (In, Out), PK In connector, USB COMPUTER port, USB MEMORY port, Ext Drive connector, AC Inlet	Main Out jacks (L/Mono, R), AUX Out jacks (L/Mono, R), Input jacks (L/Mono, R), Phones jack: Stereo 1/4-inch phono type, Pedal jacks (Damper, Expression, Control), MIDI connectors (In, Out), PK In connector, USB COMPUTER port, USB MEMORY port, DC In jack	
Power Supply			AC 117 V, 230 V, 240 V	DC 9V (AC adaptor)	
Power Consumption / Power Supply			220 W	1000 mA	
Finish			Polished Cherry	Black	
Dimensions	Console (included Music Rest)		1,299 (W) x 683 (D) x 525 (H) mm 51-3/16 (W) x 26-15/16 (D) x 20-11/16 (H) inches	1,250 (W) x 510 (D) x 370 (H) mm 49-1/4 (W) x 20-1/8 (D) x 14-5/8 (H) inches	
	Stand		1,282 (W) x 554 (D) x 765 (H) mm 50-1/2 (W) x 21-13/16 (D) x 30-1/8 (H) inches	————	
	Pedalboard		PK-25A: 1,068 (W) x 885 (D) x 283 (H) mm; 42-1/16 (W) x 34-7/8 (D) x 11-3/16 (H) inches, PK-9: 905 (W) x 456 (D) x 273 (H) mm; 35-11/16 (W) x 18 (D) x 10-3/4 (H) inches	————	
Weight	Console		64 kg; 142 lbs	25.5 kg; 56 lbs 4 oz	
	Stand		38 kg; 84 lbs	————	
	Pedalboard (option)		PK-25A: 29 kg; 64 lbs, PK-9: 13.4 kg; 29 lbs 9 oz.		
	Bench		BNC-23: 12.7 kg; 28 lbs	BNC-23-BK: 12.7 kg; 28 lbs, BNC-15-BK: 6.5 kg; 14 lbs	
Accessories			Music Rest, 2 screws for the Music Rest, Console Cover, PK Cable, Cord Hook, Panel Sheet, Power Cord, Bench, Remote Controller, Dry-cell Battery x 2, Owner's Manual, Voice & Rhythm Guide	Music Rest, AC Adaptor, Power Cord for AC Adaptor, PK Cable, Owner's Manual, Version 2 Supplementary Manual, Quick Guide, Voice & Rhythm Guide	
Options			Pedalboard: PK-25A, PK-9, Stereo Headphones, USB Flash Memory*, USB CD Drive, Microphone, Keyboard Amplifier: KC/CM Series	Keyboard Stand: KS-G8, KS-12, Pedalboard: PK-25A, PK-9, Damper Pedal: DP-10, DP-2, Expression Pedal: EV-7, Bench, Stereo Headphones, USB Flash Memory*, USB CD Drive, Keyboard Amplifier: KC/CM Series	

* Use USB Flash Memory sold by Roland. We cannot guarantee operation if other products are used. All specifications are subject to change.

- Organ Bench
BNC-23
(for AT-900C)



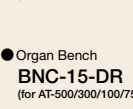
- Organ Bench
BNC-23-BK
(for AT-350C)



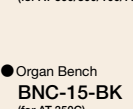
- Organ Bench
BNC-27-WN
(for AT-900)



- Organ Bench
BNC-27-DB
(for AT-900/300/100/75)



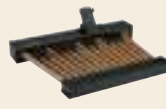
- Organ Bench
BNC-15-DR
(for AT-900/300/100/75)



- Organ Bench
BNC-15-BK
(for AT-350C)



- 25-Key Pedalboard
PK-25A
(for AT-900C/350C)



- 20-Key Pedalboard
PK-9
(for AT-900C/350C)



- Headphones
RH-Series

- Microphone
DR-Series

- USB Flash Memory
M-UF-Series

- Keyboard Amplifier
KC-Series

- CUBE Monitor
CM-Series

Acquiring skill the fun way. A heightened organ experience with Score Book and visual media.

Roland Collection Series (Music score plus DVD and FD)



Organ Music Collection Vol.1

Arrangement/Performance: Hector Olivera
[AJC-007J]

Organ Music Collection Vol.3

Arrangement/Performance: Tony Fenelon
[AJC-010J]

Jazz Organ Collection Vol.1

Arrangement/Performance: Akio Sasaki
[AJC-003J]

Organ Music Collection Vol.2

Arrangement/Performance: Tony Fenelon
[AJC-004J]

Organ Music Collection Vol.4

Arrangement/Performance: Tony Fenelon
[AJC-011J]

Jazz Organ Collection Vol.2

Arrangement/Performance: Akio Sasaki
[AJC-009J]

* AJC-003J is not available in the United States. * AJC-003J comes with CD instead of FD.

For more details, visit:

http://www.roland.com/products/en/Roland_Collection_Series/

Roland Score Series (Music score plus DVD and FD)



Organ Book Vol.1

Arrangement: Yuri Tachibana,
Masako Kayamoto,
Ryoki Yamaguchi
[AJS-001J]

Organ Book Vol.2

Arrangement: Yuri Tachibana,
Masako Kayamoto,
Ryoki Yamaguchi
[AJS-002J]

* AJS-001J/002J are not available in the United States.

For more details, visit:

http://www.roland.com/products/en/Roland_Score_Series/

Music Video Collection (DVD)



Atelier Vision Music Video 1

Performance: Yuri Tachibana
[AJM-001J (NTSC)]
[AJM-001P (PAL)]

Atelier Vision Music Video 2

Performance: Yuri Tachibana
[AJM-002J (NTSC)]
[AJM-002P (PAL)]

For more details, visit:

http://www.roland.com/products/en/AJM_series/

Roland Organ Classic Series (Music score plus DVD and FD [AJK-001J] or CD [AJK-002J/003J])



Roland Organ Classic

Vol. 1 Hector Olivera
Eight Short Preludes and
Fugues BWV553-560
Edit: Hector Olivera
[AJK-001J]

Roland Organ Classic

Vol. 2 Hector Olivera
Chorale Preludes composed
by Bach
Edit: Hector Olivera
[AJK-002J]

Roland Organ Classic

Vol. 3 Hector Olivera
Romantic Organ Works
Edit: Hector Olivera
[AJK-003J]

For more details, visit:

http://www.roland.com/products/en/AJK_series/

"All About Organ" represents our respect for the rich history of "The King of Instruments" and our desire to expand this tradition. Roland, including the Rodgers brand, is the "Organ Company" offering the greatest diversity of superior quality instruments for home, church, and stage. "All About Organ" symbolizes our passion, as we inspire the enjoyment of organ music performance throughout the world.



All About Organ

RODGERS

MUSIC
ATELIER

ROLAND
CLASSIC

ATELIER Combo

V-Combo

Roland's Organ portal page <http://www.roland.com/organ/>

Committed to producing products that are inviting to use and easy on the environment



Roland's Miyakoda Factory in Hamamatsu, Japan (producing AT-800/500/300/100/75/350C), is a state-of-the-art facility that has acquired internationally recognized ISO14001 certification for its environmental management systems and ISO9001* for quality assurance. Recycled plastic is used for the MUSIC ATELIER keyboards and keyboard parts with no lead materials used in the organs. Using Roland's original digital-cell production method, each instrument is individually made by hand and carefully assembled with low-environmental impact.

*ISO14001 is an international standard for environmental management systems issued by the International Organization for Standardization (ISO). Similarly ISO9001 is an international ISO standard for quality management systems.



ISO14001
JQA-EM0324
Miyakoda Factory



ISO9001
JQA-1195
Miyakoda Factory



Like the Miyakoda facility, the Rodgers factory in Hillsboro, Oregon (producing AT-900 Platinum Edition/900/900C) is environmentally responsible in eliminating

waste, promoting recycling, and choosing environmentally friendly products from the offices to the factory floor. As each instrument is hand crafted, sawdust, wood waste, solvents, paints and other manufacturing byproducts are all recycled.

Additionally, each instrument manufactured at both Miyakoda Factory and Rodgers Factory is in compliance with the strict Restriction of Hazardous Substances (RoHS) standards established by the EU for electronic equipment.

ROLAND, ATELIER, CUBE MONITOR, D-BEAM, VIMA TUNES are either registered trademarks or trademarks of Roland Corporation in the United States and/or other countries. RODGERS is a registered trademark of Rodgers Instruments Corporation in the United States. Company names and product names appearing in this document are registered trademarks or trademarks of their respective owners.

All specifications and appearances are subject to change.

It is forbidden by law to make an audio recording, video recording, copy or revision of a third party's copyrighted work (musical work, video work, broadcast, live performance, or other work), whether in whole or in part, and distribute, sell, lease, perform, or broadcast it without the permission of the copyright owner. Do not use this product for purposes that could infringe on a copyright held by a third party. We assume no responsibility whatsoever with regard to any infringements of third-party copyrights arising through your use of this product. The copyright of content in this product (the sound waveform data, style data, accompaniment patterns, phrase data, audio loops and image data) is reserved by Roland Corporation. Purchasers of this product are permitted to utilize said content for the creating, performing, recording and distributing original musical works. Purchasers of this product are NOT permitted to extract said content in original or modified form, for the purpose of distributing recorded medium of said content or making them available on a computer network. You cannot save song data that is copyrighted. Unauthorized use of the exported notation data for purposes other than personal enjoyment without permission from the copyright holder is forbidden by law.

Roland
WE DESIGN THE FUTURE

Visit us online at www.Roland.com

Printed in Japan Apr. 2012 RAM-4765 UPR-SS

